

Brocade Enterprise SAN Switch Module for
IBM @server BladeCenter
and Brocade Entry SAN Switch Module for
IBM @server BladeCenter



Installation Guide

Brocade Enterprise SAN Switch Module for
IBM @server BladeCenter
and Brocade Entry SAN Switch Module for
IBM @server BladeCenter



Installation Guide

Note:

Before using this information and the product it supports, read the general information in Appendix B, "IBM Statement of Limited Warranty Z125-4753-07 11/2002," on page 61 and Appendix C, "Notices," on page 83.

Second Edition (April 2004)

© Copyright International Business Machines Corporation 2004. All rights reserved.
US Government Users Restricted Rights – Use, duplication or disclosure restricted by
GSA ADP Schedule Contract with IBM Corp.

Contents

Safety	v
Chapter 1. Introducing the Brocade Enterprise and Entry SAN switch modules.	1
Features and specifications.	3
Related documentation	7
Notices and statements used in this document	9
Major components of the switch module	10
Chapter 2. Installing and replacing a switch module.	13
Installation guidelines	14
System reliability guidelines.	15
Handling static-sensitive devices	15
Installing a switch module	16
Removing or replacing a switch module.	23
Chapter 3. Information panel LEDs and external Fibre Channel ports	27
Information panel	27
LEDs	29
Chapter 4. Configuring the switch module through the Telnet interface	33
Connecting to the switch module	34
Establishing a Telnet session through the management module	34
Establishing a Telnet session in a command-line window	42
Chapter 5. Configuring the switch module through the Advanced Web Tools interface	45
Connecting to the switch module	46
Establishing a Web-interface session through the management module	46
Establishing a Web-interface session through a Web browser	53
Chapter 6. Advanced features for the Brocade Enterprise and Entry SAN switch modules	55
Appendix A. Getting help and technical assistance	59
Before you call	59
Using the documentation.	59
Getting help and information from the World Wide Web	60
Software service and support	60
Hardware service and support	60
Appendix B. IBM Statement of Limited Warranty Z125-4753-07 11/2002	61

Part 1 - General Terms	61
Part 2 - Country-unique Terms	65
Part 3 - Warranty Information	79
Appendix C. Notices	83
Edition notice	84
Trademarks	84
Important notes	85
Product recycling and disposal	86
Battery return program	86
Electronic emission notices	87
Federal Communications Commission (FCC) statement.	87
Industry Canada Class A emission compliance statement	87
Australia and New Zealand Class A statement	87
United Kingdom telecommunications safety requirement	87
European Union EMC Directive conformance statement	88
Taiwanese Class A warning statement	88
Chinese Class A warning statement	88
Japanese Voluntary Control Council for Interference (VCCI) statement	89
Index	91

Safety

Before installing this product, read the Safety Information.

قبل تركيب هذا المنتج، يجب قراءة الملاحظات الأمنية

Antes de instalar este produto, leia as Informações de Segurança.

在安裝本產品之前，請仔細閱讀 **Safety Information**
(安全信息)。

安裝本產品之前，請先閱讀「安全資訊」。

Prije instalacije ovog produkta obavezno pročitajte Sigurnosne Upute.

Před instalací tohoto produktu si přečtěte příručku bezpečnostních instrukcí.

Læs sikkerhedsforskrifterne, før du installerer dette produkt.

Lees voordat u dit product installeert eerst de veiligheidsvoorschriften.

Ennen kuin asennat tämän tuotteen, lue turvaohjeet kohdasta Safety Information.

Avant d'installer ce produit, lisez les consignes de sécurité.

Vor der Installation dieses Produkts die Sicherheitshinweise lesen.

Πριν εγκαταστήσετε το προϊόν αυτό, διαβάστε τις πληροφορίες ασφαλείας (safety information).

לפני שתתקינו מוצר זה, קראו את הוראות הבטיחות.

A termék telepítése előtt olvassa el a Biztonsági előírásokat!

Prima di installare questo prodotto, leggere le Informazioni sulla Sicurezza.

製品の設置の前に、安全情報をお読みください。

본 제품을 설치하기 전에 안전 정보를 읽으십시오.

Пред да се инсталира овој продукт, прочитајте информацијата за безбедност.

Les sikkerhetsinformasjonen (Safety Information) før du installerer dette produktet.

Przed zainstalowaniem tego produktu, należy zapoznać się z książką "Informacje dotyczące bezpieczeństwa" (Safety Information).

Antes de instalar este produto, leia as Informações sobre Segurança.

Перед установкой продукта прочтите инструкции по технике безопасности.

Pred inštaláciou tohto zariadenia si pečítajte Bezpečnostné predpisy.

Pred namestitvijo tega proizvoda preberite Varnostne informacije.

Antes de instalar este producto, lea la información de seguridad.

Läs säkerhetsinformationen innan du installerar den här produkten.

Important:

All caution and danger statements in this documentation begin with a number. This number is used to cross reference an English caution or danger statement with translated versions of the caution or danger statement in the *IBM Safety Information* book.

For example, if a caution statement begins with a number 1, translations for that caution statement appear in the *IBM Safety Information* book under statement 1.

Be sure to read all caution and danger statements in this documentation before performing the instructions. Read any additional safety information that comes with your server or optional device before you install the device.

Statement 1:



DANGER

Electrical current from power, telephone, and communication cables is hazardous.

To avoid a shock hazard:

- Do not connect or disconnect any cables or perform installation, maintenance, or reconfiguration of this product during an electrical storm.
- Connect all power cords to a properly wired and grounded electrical outlet.
- Connect to properly wired outlets any equipment that will be attached to this product.
- When possible, use one hand only to connect or disconnect signal cables.
- Never turn on any equipment when there is evidence of fire, water, or structural damage.
- Disconnect the attached power cords, telecommunications systems, networks, and modems before you open the device covers, unless instructed otherwise in the installation and configuration procedures.
- Connect and disconnect cables as described in the following table when installing, moving, or opening covers on this product or attached devices.

To Connect:

1. Turn everything OFF.
2. First, attach all cables to devices.
3. Attach signal cables to connectors.
4. Attach power cords to outlet.
5. Turn device ON.

To Disconnect:

1. Turn everything OFF.
2. First, remove power cords from outlet.
3. Remove signal cables from connectors.
4. Remove all cables from devices.

Statement 2:



CAUTION:

When replacing the lithium battery, use only IBM Part Number 33F8354 or an equivalent type battery recommended by the manufacturer. If your system has a module containing a lithium battery, replace it only with the same module type made by the same manufacturer. The battery contains lithium and can explode if not properly used, handled, or disposed of.

Do not:

- **Throw or immerse into water**
- **Heat to more than 100°C (212°F)**
- **Repair or disassemble**

Dispose of the battery as required by local ordinances or regulations.

Statement 3:



CAUTION:

When laser products (such as CD-ROMs, DVD drives, fiber optic devices, or transmitters) are installed, note the following:

- Do not remove the covers. Removing the covers of the laser product could result in exposure to hazardous laser radiation. There are no serviceable parts inside the device.
- Use of controls or adjustments or performance of procedures other than those specified herein might result in hazardous radiation exposure.



DANGER

Some laser products contain an embedded Class 3A or Class 3B laser diode. Note the following.

Laser radiation when open. Do not stare into the beam, do not view directly with optical instruments, and avoid direct exposure to the beam.



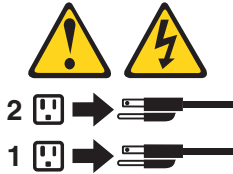
Class 1 Laser Product
Laser Klasse 1
Laser Klass 1
Luokan 1 Laserlaite
Appareil À Laser de Classe 1

Statement 5:



CAUTION:

The power control button on the device and the power switch on the power supply do not turn off the electrical current supplied to the device. The device also might have more than one power cord. To remove all electrical current from the device, ensure that all power cords are disconnected from the power source.



Statement 8:



CAUTION:

Never remove the cover on a power supply or any part that has the following label attached.



Hazardous voltage, current, and energy levels are present inside any component that has this label attached. There are no serviceable parts inside these components. If you suspect a problem with one of these parts, contact a service technician.

WARNING: Handling the cord on this product or cords associated with accessories sold with this product, will expose you to lead, a chemical known to the State of California to cause cancer, and birth defects or other reproductive harm. *Wash hands after handling.*

ADVERTENCIA: El contacto con el cable de este producto o con cables de accesorios que se venden junto con este producto, pueden exponerle al plomo, un elemento químico que en el estado de California de los Estados Unidos está considerado como un causante de cancer y de defectos congénitos, además de otros riesgos reproductivos. *Lávese las manos después de usar el producto.*

Chapter 1. Introducing the Brocade Enterprise and Entry SAN switch modules

This *Installation Guide* contains information about setting up and installing the Brocade Enterprise SAN Switch Module for IBM® @server BladeCenter® and the Brocade Entry SAN Switch Module for IBM @server BladeCenter. Throughout this document, the term *switch module* generically refers to both types of switch modules. The term *Enterprise version* specifically refers to the Brocade Enterprise SAN Switch Module for IBM @server BladeCenter. The term *Entry version* specifically refers to the Brocade Entry SAN Switch Module for IBM @server BladeCenter.

You can install up to two switch modules in an IBM @server BladeCenter Type 8677 (BladeCenter chassis). For installation details, see Chapter 2, “Installing and replacing a switch module,” on page 13 and Chapter 3, “Information panel LEDs and external Fibre Channel ports,” on page 27. For additional information, see the instructions in your IBM @server BladeCenter Type 8677 documentation.

The switch module is a Fibre Channel component that consists of 16 ports:

- Two external Fibre Channel user ports with which to connect to external Fibre Channel devices
- 14 internal ports to connect to the BladeCenter blade server bays

You can manage and configure the switch module through multiple interfaces. For more information, see Chapter 4, “Configuring the switch module through the Telnet interface,” on page 33 and Chapter 5, “Configuring the switch module through the Advanced Web Tools interface,” on page 45.

You can obtain up-to-date information about the switch module and other IBM server products at <http://www.ibm.com/eserver/xseries/>.

The Enterprise version comes with a Full SAN Scaling (up to 239 switches) license. This license allows for up to 239 domain attachments within a fabric. The Entry version is limited to a two-domain fabric. The Entry version is upgradeable through the purchase of an optional license key that provides Full SAN Scaling capabilities.

Record information about the switch module in the following table. You will need this information when you register the switch module with IBM.

Product name	Brocade Enterprise SAN Switch Module for IBM @server BladeCenter or Brocade Entry SAN Switch Module for IBM @server BladeCenter
Model number	_____
Serial number	_____
Media access control (MAC) address	_____
Worldwide name (WWN)	_____

The switch module has five labels: a product name label, a serial number label, a safety certification label, and two media access control/worldwide name (MAC address/WWN) labels. The product name label is on the right side of the switch module. The product part number and serial number are on the serial-number label on the left side of the switch module. The safety certification label is on the left side of the switch module. The first MAC address/WWN label is on the information panel on top of the switch-module external port 0. The second MAC/WWN address label is on the left side of the switch module. See Figure 1 on page 11 for the location of the switch-module labels that contain the MAC address/WWN and serial number information.

Open the shipping carton of the switch module and carefully unpack its contents. The carton contains the following items:

- One Fibre Channel switch module: Brocade Enterprise SAN Switch Module for IBM @server BladeCenter™ or Brocade Entry SAN Switch Module for IBM @server BladeCenter
- The IBM *BladeCenter Documentation CD*
- One diagnostic wrap plug
- The *Brocade Enterprise SAN Switch Module for IBM @server BladeCenter and Brocade Entry SAN Switch Module for IBM @server BladeCenter Installation Guide* (this document)
- Safety information flyer

Note: The illustrations in this document might differ slightly from your hardware.

Features and specifications

This section provides a summary of the features and specifications for the switch module.

The switch module has the following features

- One PPC405GP processor that operates at 200 MHz
- One 256 Kb serial electrically erasable programmable read-only memory (EEPROM)
- One real-time clock with a 10-year battery
- Three temperature sensors
- Two external autosensing Fibre Channel ports that operate at a maximum of 2 Gbps
- 14 internal fixed-speed Fibre Channel ports that operate at 2 Gbps
- Two internal full-duplex 100 Mbps Ethernet interfaces, terminated at a single MAC
- Power-on diagnostics and status reporting
- Standard Ethernet and Fibre Channel management information base (MIB) support
- External ports that can be configured as F_ports (fabric ports), FL_ports (fabric loop ports), or E_ports (expansion ports)
- Internal ports that are configured as F_ports at 2 Gbps
- Frame-filtering technology that enables advanced zoning and monitoring capabilities
- Optional short wavelength (SWL) and long wavelength (LWL) small form-factor pluggables (SFPs)

The following software features come with the switch module:

- Brocade Advanced Web Tools
- Brocade Advanced Zoning
- Brocade Fabric Watch
- Full SAN Scaling (up to 239 switches) (Enterprise version only)
- Support for Brocade Fabric Access API and API Scripting Toolkit
- Two Domain Fabric (Entry version only)

For information about the standard software features, see the Brocade documentation on the IBM *BladeCenter Documentation* CD. See “Related documentation” on page 7 for descriptions of these documents.

The following software features are optional:

- Brocade Advanced Performance Monitoring for IBM @server BladeCenter
- Brocade ISL Trunking for IBM @server BladeCenter
- Brocade Performance Bundle for IBM @server BladeCenter
- Brocade Extended Fabrics for IBM @server BladeCenter
- Brocade Advanced Security (Secure OS) for IBM @server BladeCenter
- Brocade Remote Switch for IBM @server BladeCenter
- Entry Switch Upgrade for IBM @server BladeCenter (Entry version only)

To activate and use these optional software features, you must purchase the corresponding license keys. For information about these features, see the *Brocade Fabric OS Procedures Guide* on the *IBM BladeCenter Documentation CD*. See “Related documentation” on page 7 for a description of this document. For information about license keys, see Chapter 6, “Advanced features for the Brocade Enterprise and Entry SAN switch modules,” on page 55.

Table 1 contains the specifications of the switch module.

Table 1. Fibre Channel switch-module specifications

Fibre Channel switch-module standards and protocols:	Fibre Channel switch-module standards and protocols (continued):	Fibre Channel switch-module standards and protocols (continued):
<ul style="list-style-type: none"> • Fibre Channel standards: <ul style="list-style-type: none"> – FC-AL ANSI X3.272: – FC-AL-2 NCIT S 332: – FC-FLA NCIT S TR-20: – FC-GS-3 NCITS 348-2000 Rev 7.01 – FC-FG ANSI X3.289: – FC-FS Rev 1.7 – FC-PH ANSI X3.230: – FC-PH-2 ANSI X3.297: – FC-PH-3 ANSI X3.303: – FC-PLDA NCIT S TR-19: – FC-SW-2 Rev 5.3 – FC-VI Rev 1.61 – IPFC RFC 2625 – SANmark compliance SCD-3001 v2a1... – FC-MI, Rev 1.92 – FC-SB-3 ANSI/INCITS 374:2003 – FC-BB-2 Rev 5.3 	<ul style="list-style-type: none"> • Fibre Channel protocols: <ul style="list-style-type: none"> – Fibre Channel service classes: Class 2 and class 3. – Operation modes: Fibre Channel class 2 and class 3, connectionless. – External port type: <ul style="list-style-type: none"> - F_port. - FL_port. - E_port. - Self-discovery based on switch type U_port, an optional port type. – Internal port type: 2 Gbps is the default setting. – Port characteristics: External ports are automatically detected and self-configuring. – Number of Fibre Channel ports: Two external ports and 14 internal ports. – Scalability: 239 switches maximum depending on your configuration. 	<ul style="list-style-type: none"> • Fibre Channel protocols (continued): <ul style="list-style-type: none"> – Buffer credits: 16 buffer credits per port – Media type: Small form-factor pluggable (SFP) module – Fabric port speed: 1.0625 or 2.125 Gbps (gigabits per second) – Maximum frame size: 2148 bytes (2112-byte payload) – System processor: PPC405GP – Fabric latency: Less than 2.1 μsec from any port to any port at 2 Gbps, cut-through routing – Fabric point-to-point bandwidth: 2 Gbps or 4 Gbps at full duplex – Fabric aggregate bandwidth: 64 Gbps if all 16 ports are running 2 Gbps at full duplex – Nonblocking architecture shared-memory switch to prevent latency

Table 1. Fibre Channel switch-module specifications (continued)

<p>Switch maintainability:</p> <ul style="list-style-type: none"> • Diagnosis: Power-on self-test (POST) is performed on all functional components except the SFP module. Port operational tests include internal, external, and online tests. • User interface: Light-emitting diode (LED) indicators. <p>Fabric management:</p> <ul style="list-style-type: none"> • Management methods: <ul style="list-style-type: none"> – Web interface through Advanced Web Tools – Command-line interface (CLI) through Telnet program – Application program interface (API) • Brocade Fabric Manager for IBM @server BladeCenter Advanced Feature Options: Provides Java™-based application program to help manage the storage area network (SAN) fabric • Management information base (MIB) • Switch simple network management protocol (SNMP) agent: Enables a network management workstation to receive configuration values, traffic information, and Fibre Channel failure data through SNMP and the Ethernet interface 	<p>Dimensions:</p> <ul style="list-style-type: none"> • Width: 112 mm (4.41 in.) • Height: 29 mm (1.14 in.) • Depth: 260.3 mm (10.25 in.) • Weight: Approximately .91 kg (2 lb) <p>Environmental:</p> <ul style="list-style-type: none"> • Temperature and altitude: <ul style="list-style-type: none"> – Operating: <ul style="list-style-type: none"> - 10°C to 52°C (50°F to 125.6°F) at an altitude of 0 to 914 m (0 to 3 000 ft) - 10°C to 49°C (50°F to 120.2°F) at an altitude of 0 to 3 000 m (0 to 10 000 ft) – Non-operating: -40°C to 65°C (-40°F to 149°F) at an altitude of 0 to 12 000 m (0 to 39 370 ft) • Humidity: <ul style="list-style-type: none"> – Operating: 8% to 80%, noncondensing – Non-operating: 5% to 80%, noncondensing 	<p>Switch regulatory certifications:</p> <ul style="list-style-type: none"> • Electrical requirements: <ul style="list-style-type: none"> – Power source loading: 3.75 amps maximum at 12 V dc – Approximate heat output in British thermal units (Btu) per hour: 85.3 Btu (25 watts) – Operating voltage: 12 V dc – Circuit protection: Internally fused with over-current protection • Safety standards: <ul style="list-style-type: none"> – As a listed accessory by UL (USA) – As a component by TÜV – For use only in an IBM @server BladeCenter Type 8677
---	---	--

Table 1. Fibre Channel switch-module specifications (continued)

Switch regulatory certifications (continued):	Shortwave laser SFP module at 1 Gbps and multi-mode SFP module at 2 Gbps:	Longwave laser SFP module at 1 Gbps and 2 Gbps single-mode:
<ul style="list-style-type: none"> • Emissions standards: <ul style="list-style-type: none"> – FCC part 15B Class A (USA) – VCCI Class A ITE (Japan) – ICES-003 issue 3 (Canada) – A4EN55022 level A (EC) – Voltage fluctuations: EN 61000-3-3 – Harmonics: EN 61000-3-2 – Immunity: EN55024: 1998 – Marking: <ul style="list-style-type: none"> - FCC part 15 - UL (United States) - cUL (Canada) - TUV - VCCI - CE 	<ul style="list-style-type: none"> • Connector: LC-LC Fibre Channel cable • Color coding: Beige or black exposed connector surfaces • Cable: Fibre Channel 100-M6-SN-I (50 µm multimode) • Wavelength: 830 to 860 nm • Transmit power: -10 dBm minimum • Receiver sensitivity: -16 dBm average • Distance: <ul style="list-style-type: none"> – 500 meters (1640.42 ft) maximum using 50-micron fiber – 300 meters (984.25 ft) maximum using 62.5-micron fiber • Safety: DHHS 21 CFR(J), IEC 825-1 CENELEC EN 60825-1, VDE 	<ul style="list-style-type: none"> • Connector: LC-LC Fibre Channel cable • Color coding: Blue exposed connector surfaces • Cable: Fibre Channel 100SM-LC-L (9 µm single mode) • Wavelength: 1270 through 13.5 nm • Transmit power: -10 dBm minimum • Receiver sensitivity: -20 dBm average • Distance: 2 meters (6.6 ft) to 10 kilometers (6.21 miles) • Safety: DHHS 21 CFR(J), IEDC 825-1 CENELEC EN 60825-1, VDE

Related documentation

This *Installation Guide* contains setup and installation instructions for the switch module. This documentation also provides general information about the switch module, including getting started, how to configure the switch module, and how to access and use online help.

In addition to this *Installation Guide*, the following related documentation is provided in Portable Document Format (PDF) on the IBM *BladeCenter Documentation* CD that comes with the switch module:

- *Safety Information*: This document contains translated caution and danger statements. Each caution and danger statement that appears in the documentation has a number that you can use to locate the corresponding statement in your language in the *Safety Information* document.

- *@server BladeCenter Type 8677 Installation and User's Guide*: This document contains instructions for setting up and configuring the BladeCenter unit and basic instructions for installing some options in the BladeCenter unit. It also contains general information about the BladeCenter unit.
- *@server BladeCenter Type 8677 Hardware Maintenance Manual and Troubleshooting Guide*: This document contains the information to help you solve BladeCenter problems yourself, and it contains information for service technicians.
- *@server BladeCenter Type 8677 Rack Installation Instructions*: This document contains instructions for installing the BladeCenter unit in a rack.
- *BladeCenter Management Module Installation Guide*: This document contains instructions for installing, setting up, starting, and configuring the management module.
- *IBM BladeCenter Management Module User's Guide*: This document contains instructions for installing, starting, configuring, and using the management module. It also provides general information about the management module and contains a description of the management module features.
- *IBM @server BladeCenter Management Module Command Line Interface Reference Guide*: This document contains instructions for installing, starting, configuring, and using the IBM @server BladeCenter management-module command-line interface. It also provides general information about the BladeCenter management-module command-line interface and contains a description of its features.
- *IBM Configuration Options Guide*: This document contains information about which small form-factor pluggable (SFP) module and cable is required to connect the switch module to other storage devices. This document is at <http://www.ibm.com/eserver/bladecenter/>.
- *IBM @server HS20 Fibre Channel Expansion Card Installation and User's Guide*: This document contains instructions for installing and configuring the IBM @server BladeCenter Fibre Channel Expansion Card in an IBM BladeCenter HS20 blade server. It also contains information about updating the basic input/output system (BIOS) and device drivers of the IBM @server BladeCenter Fibre Channel Expansion Card.
- *Brocade Fabric OS Procedures Guide v4.2.0 or later*: This document is a valuable resource for storage area network (SAN) administrators. This document provides a single location for detailed instructions to perform the most common administrative fabric and switch procedures.
- *Brocade Fabric OS Reference Manual*: This document contains detailed information about the commands that are available with the Brocade command-line interface through the Telnet program.
- *Release Notes for Brocade Enterprise SAN Switch Module for IBM @server BladeCenter and Brocade Entry SAN Switch Module for IBM @server BladeCenter*: This document contains updates, changes, issues, and

work-arounds with respect to the switch modules. Read this document for the latest information that might not be included in the Brocade reference manuals.

- *Brocade Diagnostic and System Error Message Reference Manual*: This document contains diagnostic information, error-message descriptions, and troubleshooting procedures for the Brocade switch modules.
- *Brocade MIB Reference Manual*: This document contains information about the Brocade management information base (MIB).
- *Brocade Fabric OS Features Guide* v4.2.0 or later: This document is a single reference guide for setup and usage of the many Brocade features, including switch management, advanced zoning, advanced performance monitoring, Inter-Switch Link (ISL) trunking, extended fabrics, and remote switch.
- *Brocade Advanced Web Tools Administrator's Guide* v4.2.0 or later: This document contains information about the Brocade Advanced Web Tools graphical management feature. This feature comes with the switch module.
- *Brocade Fabric Watch User's Guide* v4.2.0 or later: This document contains information about the Brocade Fabric Watch SAN health monitoring feature. This feature comes with the switch module.
- *Brocade ISL Trunking User's Guide*: This document contains information about requirements for optional ISL trunking on the external ports of the Brocade switch modules.
- *Brocade Advanced Performance Monitor User's Guide*: This document contains information about optional advanced performance-monitoring procedures for the Brocade switch modules.

Depending on your blade server model, additional documentation might be included on the IBM *BladeCenter Documentation CD*.

In addition to reviewing the documentation in this library, review the IBM *@server BladeCenter Planning and Installation Guide* at <http://www.ibm.com/eserver/bladecenter/> for information to help you prepare for system installation and configuration.

Notices and statements used in this document

The caution and danger statements that appear in this document are also in the multilingual *Safety Information* document, which is on the IBM *BladeCenter Documentation CD*. Each statement is numbered for reference to the corresponding statement in the *Safety Information* document.

The following notices and statements are used in this document:

- **Notes:** These notices provide important tips, guidance, or advice.
- **Important:** These notices provide information or advice that might help you avoid inconvenient or problem situations.

- **Attention:** These notices indicate potential damage to programs, devices, or data. An attention notice is placed just before the instruction or situation in which damage could occur.
- **Caution:** These statements indicate situations that can be potentially hazardous to you. A caution statement is placed just before the description of a potentially hazardous procedure step or situation.
- **Danger:** These statements indicate situations that can be potentially lethal or extremely hazardous to you. A danger statement is placed just before the description of a potentially lethal or extremely hazardous procedure step or situation.

Major components of the switch module

Blue on a component indicates touch points, where you can grip the component to remove it from or install it in the BladeCenter unit, open or close a latch, and so on.

Orange on a component or an orange label on or near a component indicates that the component can be hot-swapped, which means that if the BladeCenter unit and operating system support hot-swap capability, you can remove or install the component while the BladeCenter unit is running. (Orange can also indicate touch points on hot-swap components.) See the instructions in Chapter 2, “Installing and replacing a switch module,” on page 13 and the *@server BladeCenter Type 8677 Installation and User’s Guide* on the IBM *BladeCenter Documentation* CD for removing or installing a specific hot-swap component for any additional procedures that you might have to perform before you remove or install the component.

Figure 1 shows the major components of the switch module.

Note: The illustrations in this document might differ slightly from your hardware.

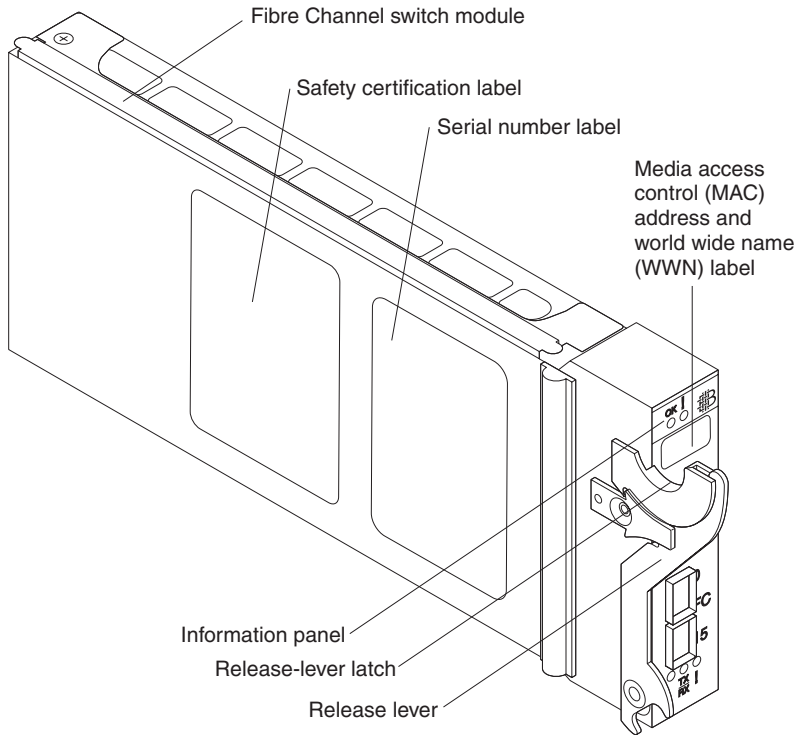


Figure 1. Fibre Channel switch-module major components

For more information about the components of the information panel, see Chapter 3, “Information panel LEDs and external Fibre Channel ports,” on page 27. For more information about the MAC address, see the *Brocade Fabric OS Procedures Guide* on the *IBM BladeCenter Documentation CD*.

Chapter 2. Installing and replacing a switch module

Figure 2 shows the I/O bay locations in the BladeCenter unit.

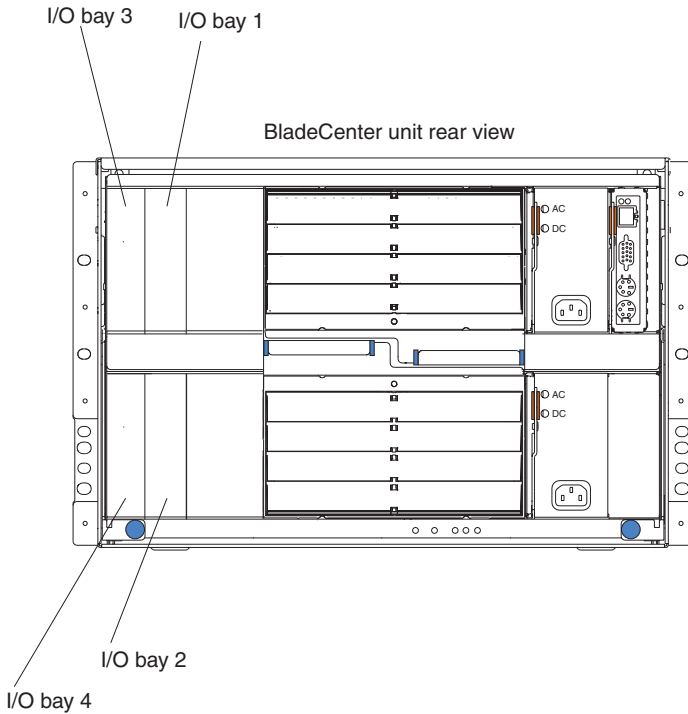


Figure 2. BladeCenter unit (rear view) with I/O bay identification

You must install Fibre Channel switch modules only in I/O bays 3 and 4 of the BladeCenter unit. The IBM @server BladeCenter Fibre Channel Expansion Card has two 2 Gbps Fibre Channel ports. At least one switch module is required when you install the IBM @server BladeCenter Fibre Channel Expansion Card in the blade server. Installing a switch module in I/O bay 3 or bay 4 provides the first connection to any installed IBM @server BladeCenter Fibre Channel Expansion Card in the BladeCenter unit. Installing a second switch module enables a second connection to an IBM @server BladeCenter Fibre Channel Expansion Card in the BladeCenter unit. Adding a second switch module provides a redundant path and a separate Fibre Channel connection from the blade server to the external Fibre Channel network and SAN.

Important: The switch modules in I/O bays 3 and 4 and all blade server expansion cards in the BladeCenter unit must use the same interface type. Therefore, you must install Fibre Channel expansion cards when you install Fibre Channel switch modules into the BladeCenter unit.

The following table summarizes the application for each switch module.

Bay	Fibre Channel switch-module function
3	Port 0 connection on the IBM @server BladeCenter Fibre Channel Expansion Card in the BladeCenter unit
4	Port 1 connection on the IBM @server BladeCenter Fibre Channel Expansion Card in the BladeCenter unit

The second switch module port connection allows for dual paths from the blade server to external Fibre Channel devices.

Installation guidelines

Before you begin to install the switch module in the BladeCenter unit, read the following information:

- Become familiar with the safety and handling guidelines specified under “Safety” on page v and “Handling static-sensitive devices” on page 15, and read the safety statements in BladeCenter unit option documentation.
- Blue on a component indicates touch points, where you can grip the component to remove it from or install it in the BladeCenter unit, open or close a latch, and so on.
- Orange on a component or an orange label on or near a component indicates that the component can be hot-swapped, which means that if the BladeCenter unit and operating system support hot-swap capability, you can remove or install the component while the BladeCenter unit is running. (Orange can also indicate touch points on hot-swap components.) See the instructions in this chapter and the *@server BladeCenter Type 8677 Installation and User’s Guide* on the IBM *BladeCenter Documentation* CD for removing or installing a specific hot-swap component for any additional procedures that you might have to perform before you remove or install the component.
- You do not have to turn off the BladeCenter unit to install or replace any of the hot-swap modules on the rear of the BladeCenter unit.
- For a list of supported options for your BladeCenter unit, go to <http://www.ibm.com/pc/us/compat/>.

System reliability guidelines

Attention: To help ensure proper cooling and system reliability, make sure that:

- Each of the I/O bays on the rear of the BladeCenter unit has either a module or filler module installed.
- A removed hot-swap module is replaced with an identical module or filler module within 1 minute of removal.
- A removed hot-swap blade server is replaced with an identical blade server or a filler blade within 1 minute of removal.
- The ventilation areas on the sides of the switch module are not blocked.
- You have followed the reliability guidelines in the documentation that comes with the BladeCenter unit.

Cable requirements for the switch module are described in the IBM *Configuration Options Guide* at <http://www.ibm.com/eserver/bladecenter/>. See the documentation that comes with your blade server for cable routing information.

Handling static-sensitive devices

Attention: Static electricity can damage electronic devices. To avoid damage, keep static-sensitive devices in their static-protective packages until you are ready to install them.

To reduce the possibility of electrostatic discharge, observe the following precautions:

- Limit your movement. Movement can cause static electricity to build up around you.
- Handle the device carefully, holding it by its edges or its frame.
- Do not touch solder joints, pins, or exposed printed circuitry.
- Do not leave the device where others can handle and damage it.
- While the device is still in its static-protective package, touch it to an unpainted metal part of the BladeCenter unit for at least 2 seconds. This drains static electricity from the package and from your body.
- Remove the device from its package and install it directly into the BladeCenter unit without setting down the device. If it is necessary to set down the device, put it back in its static-protective package. Do not place the device on the BladeCenter unit or on a metal surface.
- Take additional care when handling devices during cold weather. Heating reduces indoor humidity and increases static electricity.
- Wear an electrostatic wrist strap, if one is available.

Installing a switch module

Statement 3:



CAUTION:

When laser products (such as CD-ROMs, DVD drives, fiber optic devices, or transmitters) are installed, note the following:

- Do not remove the covers. Removing the covers of the laser product could result in exposure to hazardous laser radiation. There are no serviceable parts inside the device.
- Use of controls or adjustments or performance of procedures other than those specified herein might result in hazardous radiation exposure.



DANGER

Some laser products contain an embedded Class 3A or Class 3B laser diode. Note the following.

Laser radiation when open. Do not stare into the beam, do not view directly with optical instruments, and avoid direct exposure to the beam.



Class 1 Laser Product
Laser Klasse 1
Laser Class 1
Luokan 1 Laserlaite
Appareil À Laser de Classe 1

Statement 8:



CAUTION:

Never remove the cover on a power supply or any part that has the following label attached.



Hazardous voltage, current, and energy levels are present inside any component that has this label attached. There are no serviceable parts inside these components. If you suspect a problem with one of these parts, contact a service technician.

Complete the following steps to install a switch module:

1. Review the information in “Safety” on page v and “Installation guidelines” on page 14 through “Handling static-sensitive devices” on page 15.

2. Remove the acoustic attenuation module option, if necessary, from the rear of the BladeCenter unit. See the IBM *@server BladeCenter Type 8677 Installation and User's Guide* on the IBM *BladeCenter Documentation CD* for detailed removal instructions.

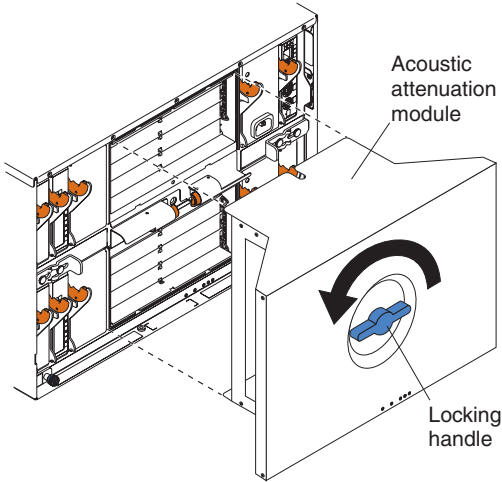


Figure 3. Removing the acoustic attenuation module

3. Make sure that the BladeCenter unit is turned on, the green dc power LED on each power module is lit, and the green OK LED on the management module is lit.
4. Select only I/O bay 3 or bay 4 in which to install the switch module.
5. Remove the filler module from the I/O bay in which you are installing the switch module. Store the filler module for future use.
6. If you have not already done so, touch the static-protective package that contains the switch module to an unpainted metal part of the BladeCenter unit for at least 2 seconds.
7. Remove the switch module from its static-protective package.

- Squeeze the release-lever latch to move the insertion arm, as shown in the following illustration.

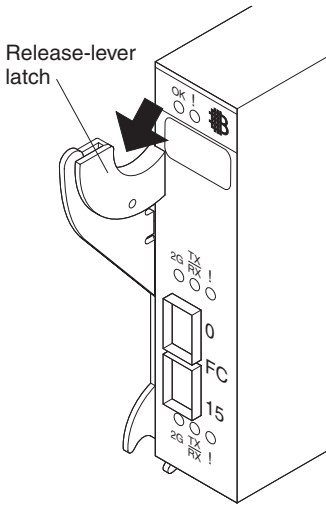


Figure 4. Squeezing the release-lever latch

9. Pull the release lever down to completely open the lever, as shown in the following illustration. When the lever is in the open position, you can correctly install the switch module in the BladeCenter unit.

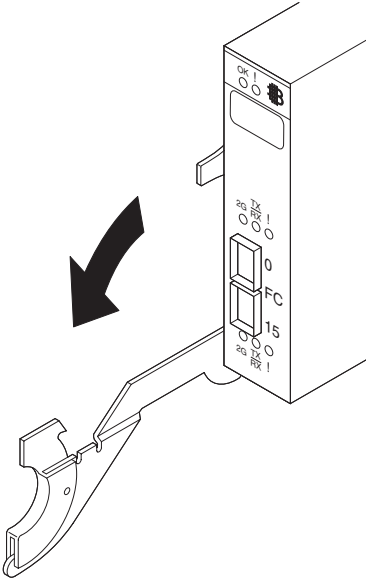


Figure 5. Opening the release lever

10. With the port side facing you and the release lever in the open position (perpendicular to the module), slide the switch module into the I/O bay until it stops.

Figure 6 shows how to install a switch module in the rear of the BladeCenter unit.

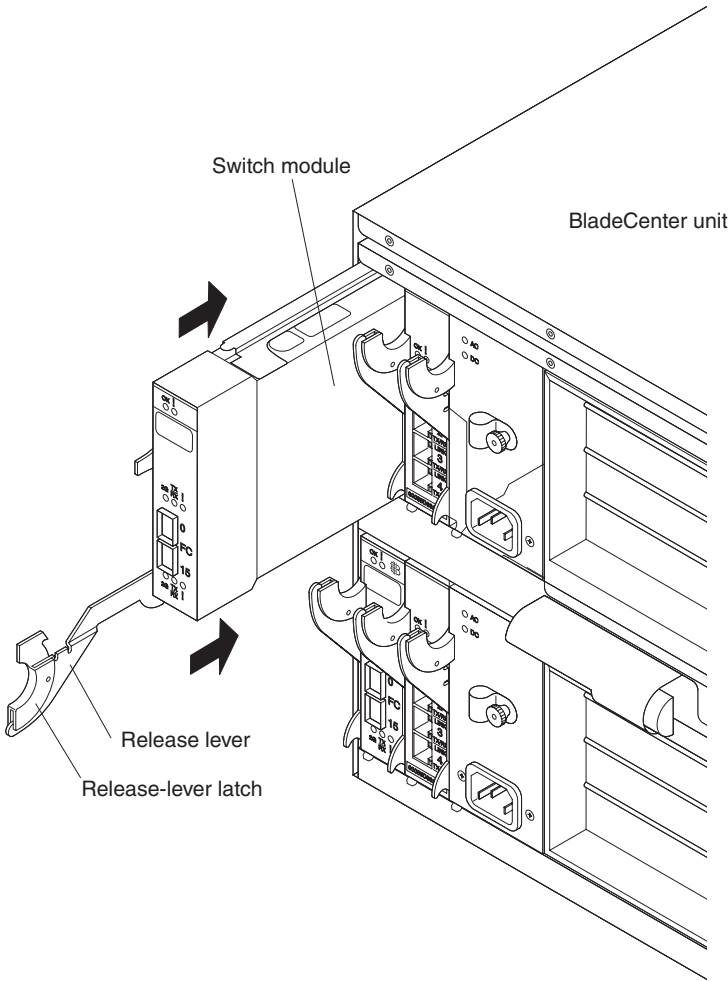


Figure 6. Installing a switch module

11. Raise the release lever until it moves to the upright (closed) position. This locks the switch module in the BladeCenter unit.

Notes:

- a. The switch module takes approximately 60 seconds to complete the power-on self-test (POST). When the switch module is turned on, an LED test occurs. All LEDs are lit and remain lit for approximately 5 seconds; then, the LEDs will all turn off, except the OK LED. The OK LED flashes to indicate a normal POST condition; then, POST proceeds as described in the next step.
 - b. To maintain proper airflow, make sure that the ventilation areas on the sides of the switch module are not blocked.
12. Make sure that the LEDs on the switch module indicate that it is operating correctly. Make sure that:
- When the POST starts, the green OK LED on the switch module is flashing. The POST tests the condition of firmware, memory, data paths, and switch logic and uses the fault LED to indicate pass or fail conditions.
 - The green OK LED on the switch module stops flashing to indicate that the switch logic has completed POST.
13. If you have a second switch module to install, repeat step 5 on page 18 through step 12; otherwise, go to step 14.
14. If you are using the external switch-module ports, connect an SFP module option to external Fibre Channel port 0 and Fibre Channel port 15. For SFP module installation instructions, see the documentation that comes with the SFP module.

Note: SFP module options do not come with the switch module, but are required if you want to use external switch-module ports.

15. Use LC-LC or LC-SC fiber-optic cables to connect the switch-module external ports to external Fibre Channel devices. For more information, see the documentation that comes with the cable options.

Note: You can remove and replace an SFP module while the switch module is operating without damaging the switch module or the SFP module. However, transmission on the affected port will be interrupted until the SFP module and cables are installed. See the documentation that comes with the connected Fibre Channel device for information about installation, configuration, and startup sequence.

16. Replace the acoustic attenuation module, if you removed it in step 2 on page 18.
17. Continue with Chapter 3, “Information panel LEDs and external Fibre Channel ports,” on page 27.

Removing or replacing a switch module

Statement 8:



CAUTION:

Never remove the cover on a power supply or any part that has the following label attached.



Hazardous voltage, current, and energy levels are present inside any component that has this label attached. There are no serviceable parts inside these components. If you suspect a problem with one of these parts, contact a service technician.

Complete the following steps to replace a switch module:

1. Review the information in “Safety” on page v and “Installation guidelines” on page 14 through “Handling static-sensitive devices” on page 15.
2. Remove the acoustic attenuation module, if any, from the rear of the BladeCenter unit. For more information, see the illustration in step 2 on page 18 and the IBM *@server BladeCenter Type 8677 Installation and User's Guide* on the IBM *BladeCenter Documentation CD*.
3. Remove the LC-LC or LC-SC fiber-optic cables from the two external ports on the SFP module. Removing these cables disrupts the network connection from the external Fibre Channel port to any connected external Fibre Channel devices. For removal instructions, see the documentation that comes with the cable options.
4. Remove any SFP modules from the switch-module external Fibre Channel ports. For SFP module removal instructions, see the documentation that comes with the SFP module.

5. Pull the release latch toward the bottom of the switch module, as shown in Figure 7. The module moves out of the bay approximately 0.6 cm (0.25 inch).

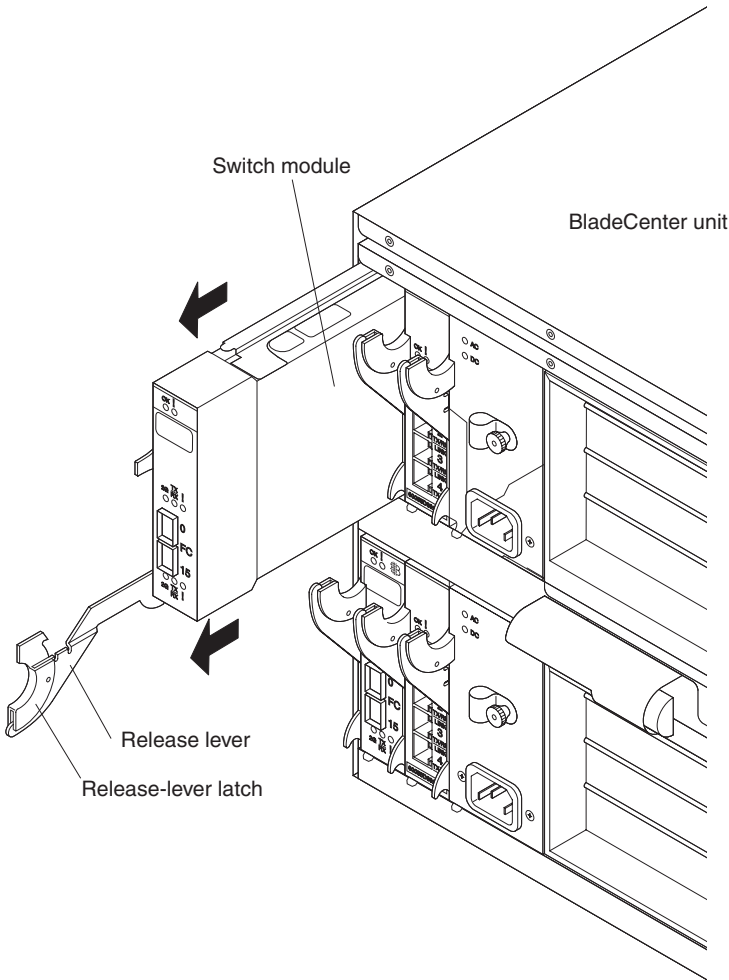


Figure 7. Removing a switch module

Attention: If you do not replace the switch module, you must insert a filler module into the empty bay within 1 minute.

6. Slide the switch module out of the bay and set it aside. Within 1 minute, place either another switch module or a filler module in the bay.

Note: To make sure that the switch module is active after you replace it, see step 11 on page 21 and step 12 on page 22.

7. If you placed another switch module into the bay and if you are using the external switch-module ports, insert any SFP modules that you removed in step 4 on page 23 into external Fibre Channel port 0 and Fibre Channel port 15. For SFP module installation instructions, see the documentation that comes with the SFP module.
8. Use LC-LC or LC-SC fiber-optic cables to connect the switch-module external ports to external Fibre Channel devices. For more information, see the documentation that comes with the cable options.
9. Replace the acoustic attenuation module option, if you removed it in step 2 on page 23. For detailed installation instructions, see the IBM *@server BladeCenter Type 8677 Installation and User's Guide* on the IBM *BladeCenter Documentation CD*.

Chapter 3. Information panel LEDs and external Fibre Channel ports

This chapter describes the information panel and LEDs on the switch module and the external Fibre Channel ports on the information panel.

Information panel

The switch-module information panel contains LEDs and two Fibre Channel ports, as shown in Figure 8 on page 28.

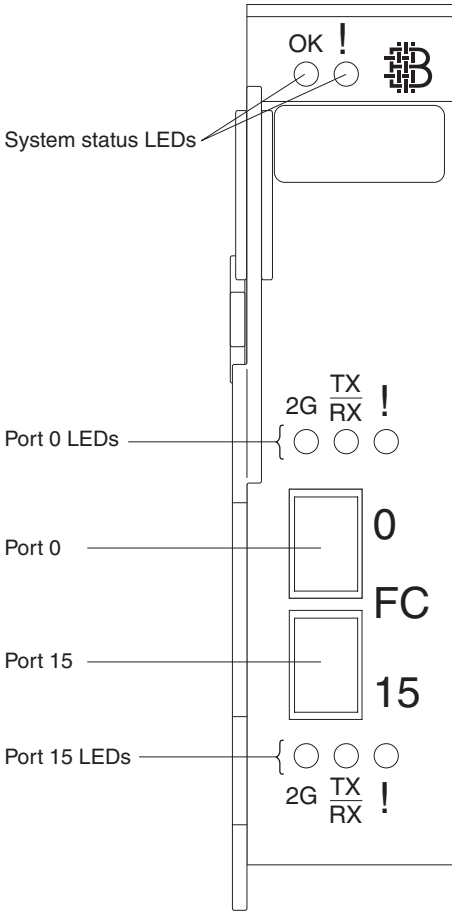


Figure 8. Fibre Channel switch-module information panel

The switch-module information panel contains the following components:

- Comprehensive LEDs that display the status of the switch module and the network. For more information, see "LEDs" on page 29.
- Two external Fibre Channel connectors to connect Fibre Channel devices, such as disk subsystems, tape drives, and other servers; and SAN devices, such as Fibre Channel switches, extenders, and gateways. These connectors are identified as port 0 and port 15 in the switch configuration menus and are labeled 0 and 15 (from top to bottom) on the switch module, as shown in Figure 8.

Note: The internal connectors are numbered 1 through 14.

LEDs

After you install the switch module in the BladeCenter unit, the switch-module LEDs become active. There are three possible LED states: off, lit, and flashing. The lit (steady) LEDs and flashing LEDs can be green or amber.

The LEDs might display any of these states and colors during startup, POST, or other diagnostic tests. This is typical and does not indicate a problem, unless the LEDs do not indicate a healthy state after all the startup (boot) processes and diagnostic tests have been completed. If one or more LEDs do not display a healthy state, make sure that the LEDs are not set to beacon. For information about how to turn beaconing on and off, see the *Brocade Fabric OS Procedures Guide* or the *Brocade Advanced Web Tools Administrator's Guide v4.2.0* or later on the *IBM BladeCenter Documentation CD*.

Any errors that are detected during POST are written to the system log. This log is accessible through the **errShow** command. For information about this command, see the *Brocade Fabric OS Procedures Guide* on the *IBM BladeCenter Documentation CD*. For information about error messages, see the *Brocade Diagnostic and System Error Message Reference Manual* on the *IBM BladeCenter Documentation CD*.

Note: You can also use the management module to make sure that the switch module is correctly operating. For more information, see the *@server BladeCenter Type 8677 Installation and User's Guide* and the *@server BladeCenter Type 8677 Hardware Maintenance Manual and Troubleshooting Guide* on the *IBM BladeCenter Documentation CD*.

Figure 9 shows the locations of the LEDs on the switch module. To interpret the meaning of the LED states, see Table 2 on page 31.

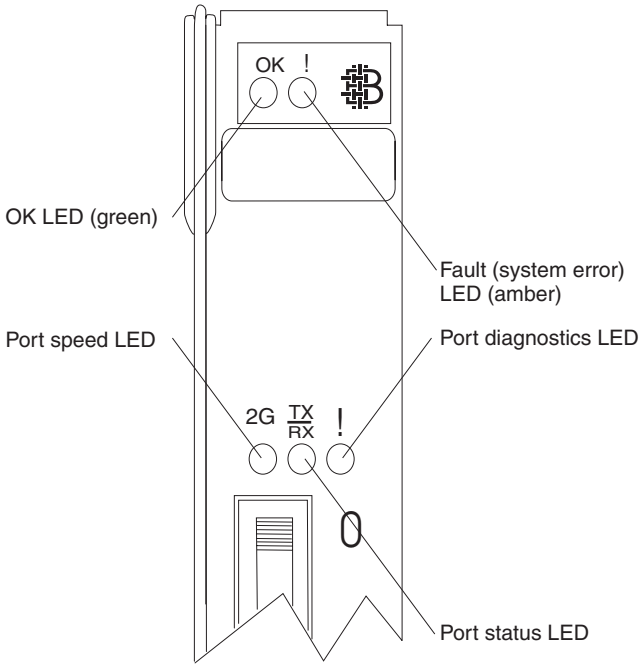


Figure 9. Fibre Channel switch-module LEDs

Notes:

- The illustrations in this document might differ slightly from your hardware.
- An amber LED is lit when a system error or event has occurred. To identify the error or event, check the LEDs on the information panel of the switch module and see Table 2 on page 31 for more information.
- An LED test occurs whenever the switch module is turned on. All LEDs are lit and remain lit for approximately 5 seconds; then, the LEDs will all turn off, except the OK LED. The OK LED flashes to indicate a normal POST condition; then, POST proceeds as described in step 12 on page 22.
- See the diagnostic section of the *Brocade Diagnostic and System Error Message Reference Manual* on the *IBM BladeCenter Documentation CD* for more information about the LEDs.

Table 2. Switch-module LED descriptions

LED name	LED color and state	Hardware status
System status (OK and !)	None	The switch module is off or receiving no power.
System status (OK)	Green: Steady	The switch module is on and the power modules in the BladeCenter unit are correctly operating.
	Green: Flashing	POST is running.
	Green: Off	The amber LED is lit or there is no power.
System status (!) (Fibre Channel switch-module fault)	Amber: Steady	Fault. POST failure or critical alert. Note: When this LED is lit, the system-error LED on the BladeCenter unit is also lit.
	Amber: Off	The green LED is lit, indicating a healthy switch, or, if the green LED is off, there is no power.
Port speed	Green: Off	The indicated Fibre Channel switch-module port (0 or 15) is operating at 1 Gbps.
	Green: On	The indicated Fibre Channel switch-module port (0 or 15) is operating at 2 Gbps.
Port status	Green: Off	No signal or the port diagnostics LED is active on the indicated port (0 or 15).
	Green: Steady	The indicated port (0 or 15) is online.
	Green: Flickering	The indicated port (0 or 15) is connected and Fibre Channel activity is occurring on that port.
	Green: Flashing slowly	The indicated port (0 or 15) is online but segmented from the connected switch or device.
	Green: Flashing rapidly	The indicated port (0 or 15) is in the internal loopback mode because of diagnostics.
Port diagnostics	Amber: Off	No faults on the indicated port (0 or 15).
	Amber: Steady	The indicated port (0 or 15) signal is present but not online.
	Amber: Flashing slowly	The indicated port (0 or 15) has been disabled, or switch beaconing is on.
	Amber: Flashing rapidly	This LED is lit on the indicated port (0 or 15) when the port-diagnostics program has discovered an error (port fault).
Note: For LED locations, see Figure 9 on page 30.		

Chapter 4. Configuring the switch module through the Telnet interface

The switch module contains a Telnet server. This server enables a Telnet client to establish a Telnet session with the Fibre Channel switch module to retrieve information or to configure parameters using the command-line interface (CLI). You can perform a variety of fabric and switch-management tasks through an Ethernet connection using the CLI.

You can access the Telnet interface in two ways:

- In the BladeCenter management-module Web interface
- In a command-line window on a network management workstation

For you to configure the switch module through the Telnet interface, the Internet protocol (IP) address and subnet masks must be compatible, and the following configuration settings in the management module must be enabled:

- Switch-module external port 0 and port 15
- External management for external port 0 and port 15

For you to access a switch module from a network management workstation, make sure that it is connected to an external BladeCenter management-module Ethernet port.

To enable the configuration settings in the management-module Web interface, click **Switch Tasks** → **Management** → **Advanced Switch Management** → **Advanced Setup**.

Important: Before you configure the switch module, make sure that the management modules in the BladeCenter unit are correctly configured. In addition, for you to access and manage the switch module from an external environment, you might have to enable certain features, such as the external ports and external management over all ports. See the applicable *BladeCenter Installation and User's Guide* documents on the *IBM BladeCenter Documentation CD* for more information. For information about configuring the switch module, see the *Brocade Fabric OS Reference Manual* on the *IBM BladeCenter Documentation CD*.

In addition to reviewing the documentation in this library, review the IBM *@server BladeCenter Planning and Installation Guide* at <http://www.ibm.com/eserver/bladecenter/> for information to help you prepare for system installation and configuration.

Connecting to the switch module

To use the Telnet program (in VT100 compatible terminal mode) to access and control the switch module, you must know the IP address for the switch module and have an existing network connection. If you have to obtain the IP address for the switch module or establish a network connection, contact your system or network administrator.

Establishing a Telnet session through the management module

Complete the following steps to establish a Telnet session through the BladeCenter management module:

1. In your browser, in the address bar, type `http://xxx.xxx.xxx.xxx`, where `xxx.xxx.xxx.xxx` is the IP address of the BladeCenter management-module interface. Click **GO** or press Enter. The Enter Network Password window opens.

Note: The default IP address for the BladeCenter management module is 192.168.70.125.

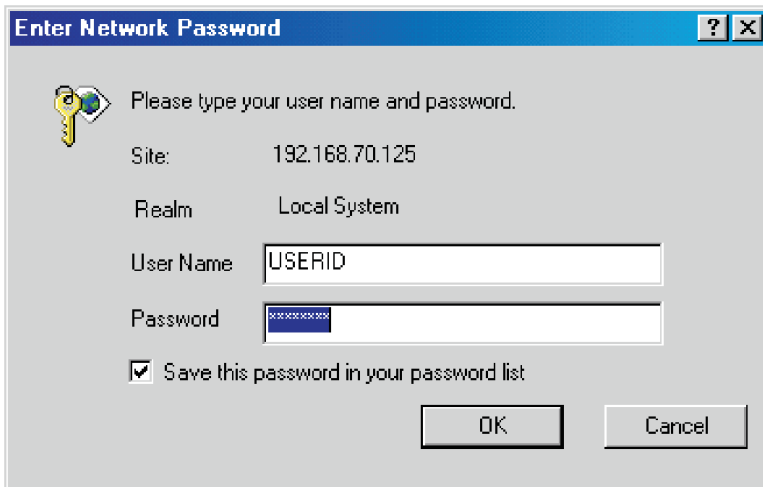


Figure 10. Enter Network Password window

2. In the **User Name** field, type the initial default user name, `USERID`. In the **Password** field, type the initial default password, `PASSWORD` (the sixth character is a zero, not the letter `O`). The user name and password are case sensitive.

The Active Session from Same Client window opens.

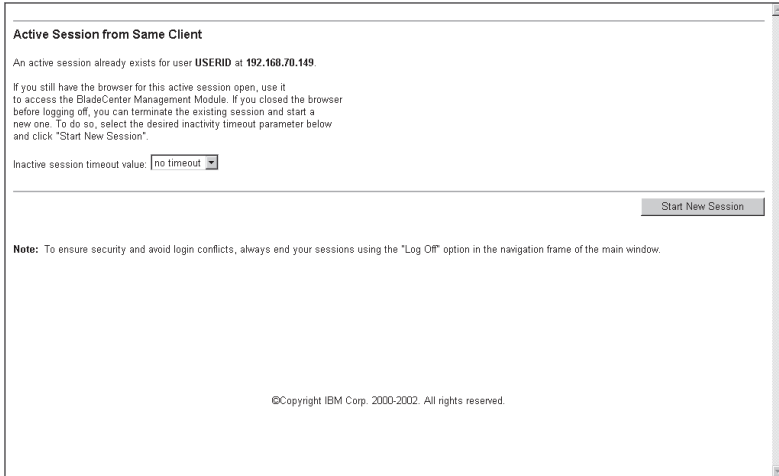


Figure 11. Active Session from Same Client window

- In the **Inactive session timeout value** field, select the timeout value for this Web session and click **Start New Session**. The BladeCenter management-module main window opens.

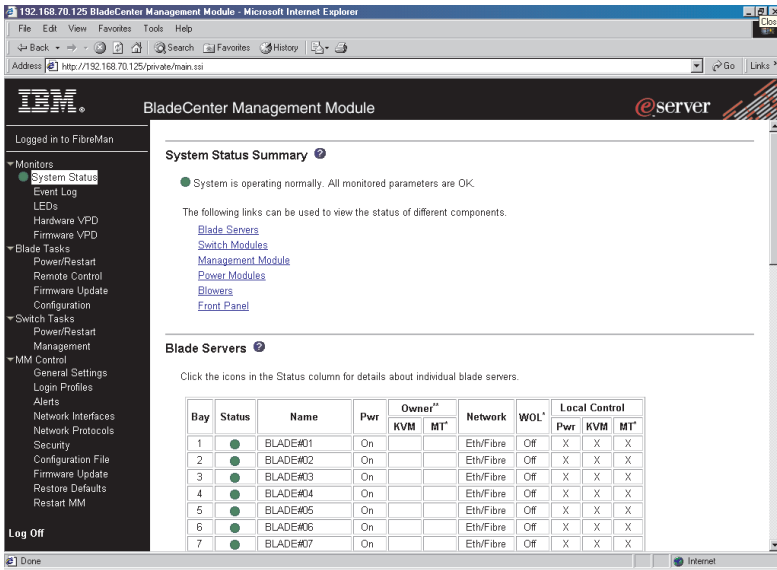


Figure 12. Management-module main window

4. In the left navigation pane, under **Switch Tasks**, click **Management**. The Switch Management window opens.

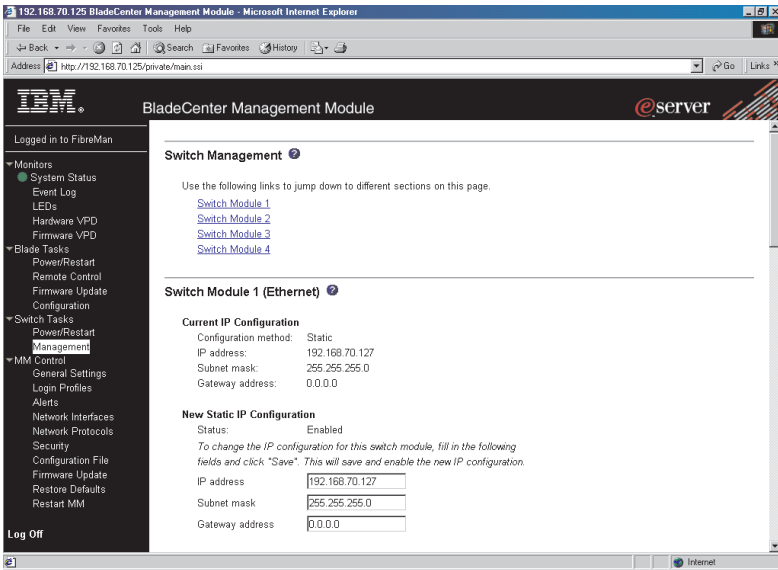


Figure 13. Switch Management window

5. Click the link for either switch module 3 or switch module 4. A window similar to the one in Figure 14 opens.

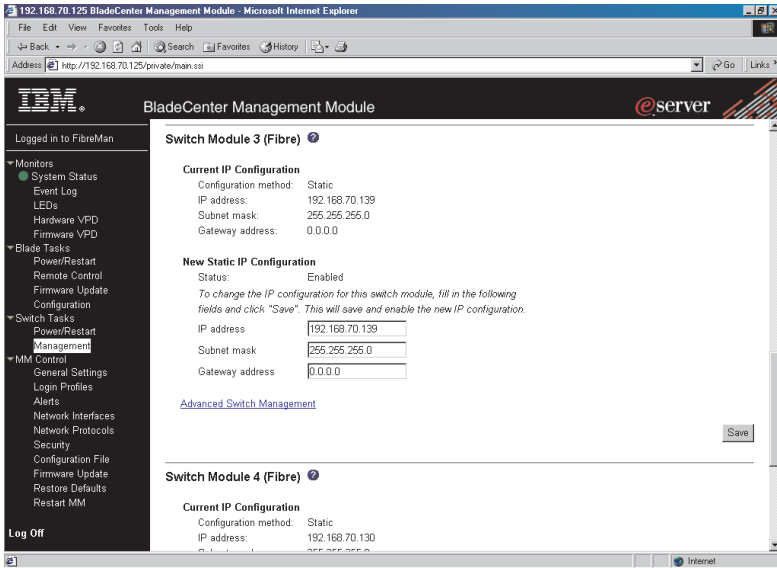


Figure 14. Switch Management window showing switch-module 3 example

6. Make sure that the IP address is the same in the **Current IP Configuration** and **New Static IP Configuration** sections.

7. Scroll down and click **Advanced Switch Management**. A window similar to the one in Figure 15 opens.

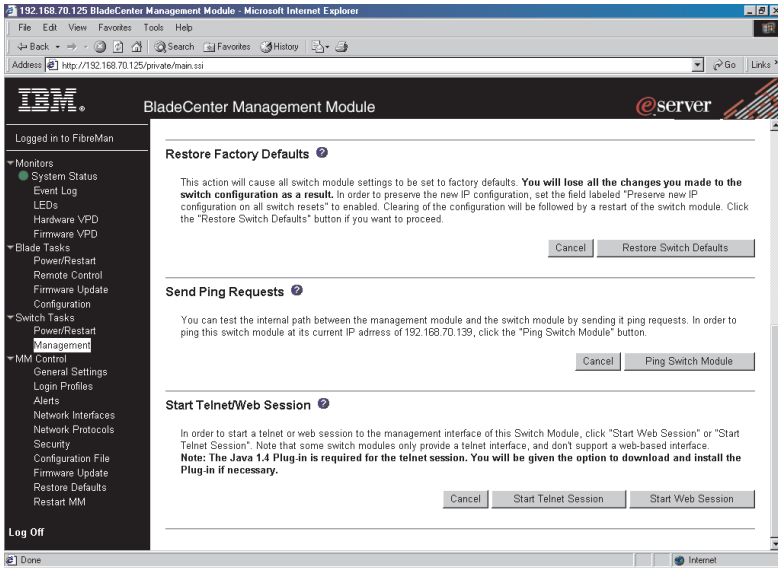


Figure 15. Switch Management window - advanced

8. To start a Telnet session, scroll down to the **Start Telnet/Web Session** section and click **Start Telnet Session**.

The management-module command-prompt window opens, as shown in Figure 16.



Figure 16. Management-module command-prompt window for Fibre Channel switch module

9. At the Login prompt, type the initial default user name, USERID, and press Enter. At the Password prompt, type the initial default password, PASSWORD (the sixth character is a zero, not the letter O), and press Enter. The user name and password are case sensitive.
10. If you are accessing the switch module for the first time, press Enter to change the switch passwords. You are prompted for a password for the root, factory, and user accounts.
A window similar to the one in Figure 17 opens.

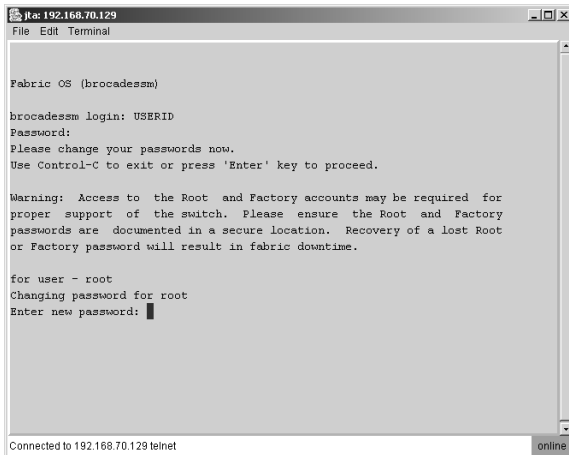
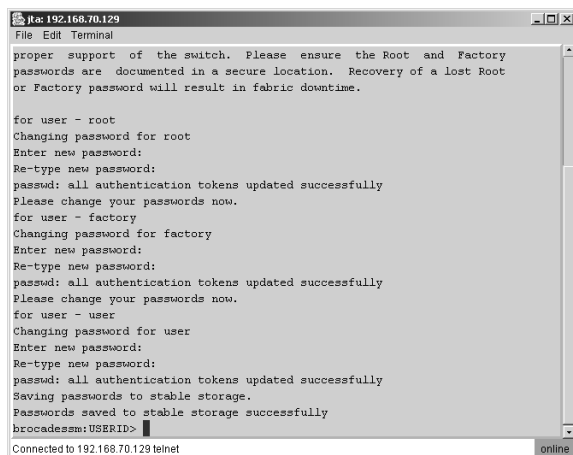


Figure 17. Management-module password-change window

After you have changed all of the passwords, the command prompt is displayed in a window similar to the one in Figure 18.



```

192.168.70.129
File Edit Terminal
proper support of the switch. Please ensure the Root and Factory
passwords are documented in a secure location. Recovery of a lost Root
or Factory password will result in fabric downtime.

for user - root
Changing password for root
Enter new password:
Re-type new password:
passwd: all authentication tokens updated successfully
Please change your passwords now.
for user - factory
Changing password for factory
Enter new password:
Re-type new password:
passwd: all authentication tokens updated successfully
Please change your passwords now.
for user - user
Changing password for user
Enter new password:
Re-type new password:
passwd: all authentication tokens updated successfully
Saving passwords to stable storage.
Passwords saved to stable storage successfully
brocade$ms:USERID>
Connected to 192.168.70.129 Telnet
online
```

Figure 18. Management-module command-line interface window

11. To open online help to view the available commands, type `help` and press Enter.

For more information about using the CLI, see the *Brocade Fabric OS Reference Manual* on the *IBM BladeCenter Documentation CD*.

Establishing a Telnet session in a command-line window

You can access the switch module by IP-enabled devices that are connected to the BladeCenter management module. An Ethernet connection to the management-module external ports on the BladeCenter unit is required. For more information, see the following documents on the *IBM BladeCenter Documentation CD*:

- *@server BladeCenter Type 8677 Installation and User's Guide*
- *BladeCenter Management Module Installation Guide*
- *IBM BladeCenter Management Module User's Guide*

Complete the following steps to establish a Telnet session through a command-line window:

1. Open a command-line window on the network-management workstation.
2. Type one of the following commands and press Enter. The IP addresses in these commands are default IP addresses.

For the switch module in I/O bay 3:

```
telnet 192.168.70.129
```

For the switch module in I/O bay 4:

```
telnet 192.168.70.130
```

A Telnet command-prompt window opens.

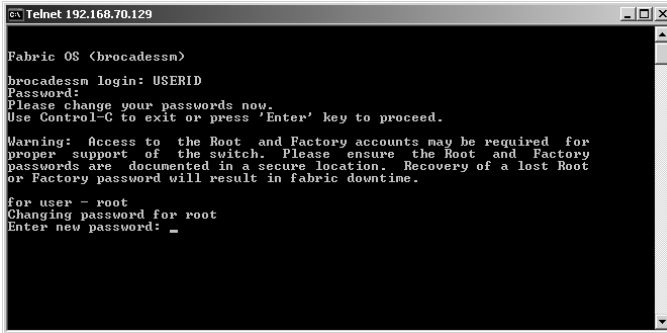


Figure 19. Telnet command-prompt window

3. At the Login prompt, type the initial default user name, USERID, and press Enter. At the Password prompt, type the initial default password, PASSWORD (the sixth character is a zero, not the letter O). The user name and password are case sensitive.

4. If you are accessing the switch module for the first time, press Enter to change the switch passwords. You are prompted for a password for the root, factory, and user accounts.

A window similar to the one in Figure 20 opens.



```

c:\Telnet 192.168.70.129
Fabric OS (brocadeadm)
brocadeadm login: USERID
Password:
Please change your passwords now.
Use Control-G to exit or press 'Enter' key to proceed.

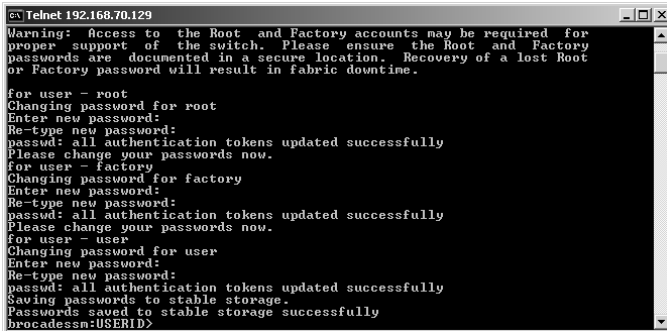
Warning: Access to the Root and Factory accounts may be required for
proper support of the switch. Please ensure the Root and Factory
passwords are documented in a secure location. Recovery of a lost Root
or Factory password will result in fabric downtime.

for user - root
Changing password for root
Enter new password: _

```

Figure 20. Telnet password-change window

After you have changed all of the passwords, the command prompt is displayed in a window similar to the one in Figure 21.



```

c:\Telnet 192.168.70.129
Warning: Access to the Root and Factory accounts may be required for
proper support of the switch. Please ensure the Root and Factory
passwords are documented in a secure location. Recovery of a lost Root
or Factory password will result in fabric downtime.

for user - root
Changing password for root
Enter new password:
Re-type new password:
passwd: all authentication tokens updated successfully
Please change your passwords now.
for user - factory
Changing password for factory
Enter new password:
Re-type new password:
passwd: all authentication tokens updated successfully
Please change your passwords now.
for user - user
Changing password for user
Enter new password:
Re-type new password:
passwd: all authentication tokens updated successfully
Saving passwords to stable storage.
Passwords saved to stable storage successfully
brocadeadm:USERID>

```

Figure 21. Telnet command-line interface window

Chapter 5. Configuring the switch module through the Advanced Web Tools interface

The switch module contains a Web server interface known as Advanced Web Tools. This server enables a Web-based client to establish a Web-interface session with the Fibre Channel switch module to retrieve information or to configure parameters using a Web browser. You can perform a variety of fabric and switch-management tasks through an Ethernet connection using a Web browser.

You can access the management-module Web interface in two ways:

- In the BladeCenter management-module Web interface
- Through a Web browser on a network-management workstation

Advanced Web Tools is a graphical interface that requires a Web browser to view and manage the switch. For information about system requirements and supported Web browsers, see the *Brocade Advanced Web Tools Administrator's Guide v4.2.0* or later on the IBM *BladeCenter Documentation CD*.

For you to configure the switch module through the Web interface, the IP address and subnet masks must be compatible, and the following configuration settings in the management module must be enabled:

- Switch-module external port 0 and port 15
- External management for external port 0 and port 15

For you to access a switch module from a network management workstation, make sure that it is connected to an external BladeCenter management-module Ethernet port.

To enable the configuration settings in the management-module Web interface, click **Switch Tasks** → **Management** → **Advanced Switch Management** → **Advanced Setup**.

Important: Before you configure the switch module, make sure that the management modules in the BladeCenter unit are correctly configured. In addition, for you to access and manage the switch module from an external environment, you might have to enable certain features, such as the external ports and external management over all ports. See the applicable *BladeCenter Installation and User's Guide* documents on the IBM *BladeCenter Documentation CD* for more information. For information about configuring the switch module, see the *Brocade Advanced Web Tools Administrator's Guide v4.2.0* or later on the IBM *BladeCenter Documentation CD*.

In addition to reviewing the documentation in this library, review the IBM *@server BladeCenter Planning and Installation Guide* at <http://www.ibm.com/eserver/bladecenter/> for information to help you prepare for system installation and configuration.

Connecting to the switch module

For you to use the Advanced Web Tools interface to access and control the switch module, you must know the IP address for the switch module and have an existing network connection. If you have to obtain the IP address for the switch module or establish a network connection, contact your system or network administrator.

Establishing a Web-interface session through the management module

Complete the following steps to establish a Web-interface session through the BladeCenter management module:

1. In your browser, in the address field, type `http://xxx.xxx.xxx.xxx`, where `xxx.xxx.xxx.xxx` is the IP address of the BladeCenter management-module interface. Click **GO** or press Enter. The Enter Network Password window opens.

Note: The default IP address for the BladeCenter management module is 192.168.70.125.

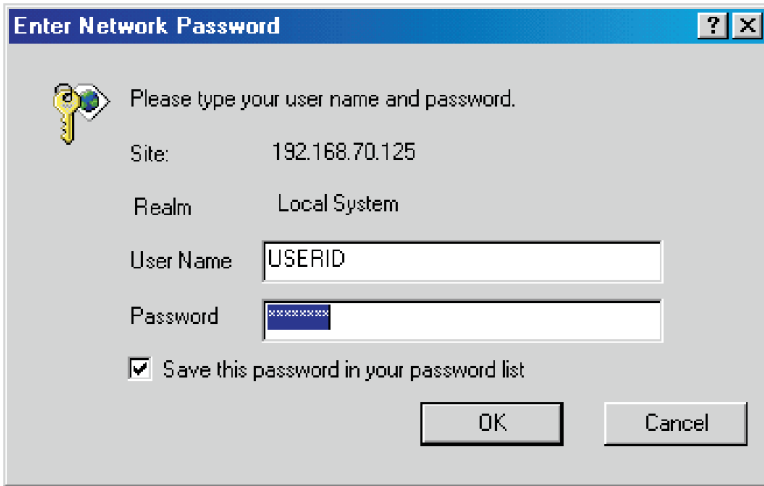


Figure 22. Enter Network Password window

- In the **User Name** field, type the initial default user name, USERID. In the **Password** field, type the initial default password, PASSWORD (the sixth character is a zero, not the letter O). The user name and password are case sensitive. The Active Session from Same Client window opens.

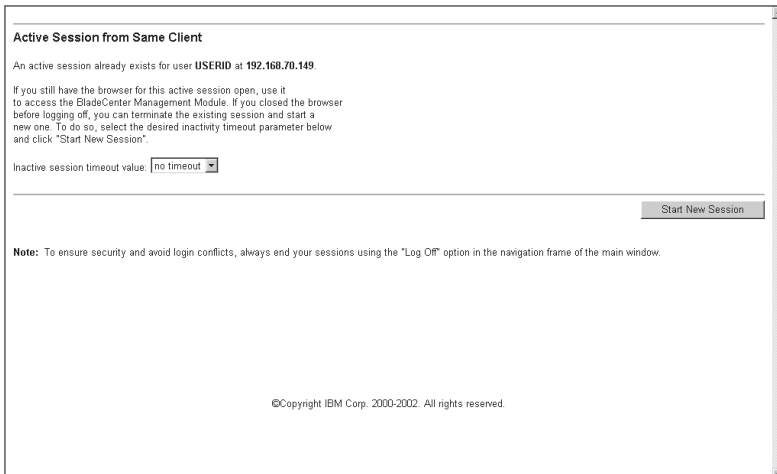


Figure 23. Active Session from Same Client window

- In the **Inactive session timeout value** field, select the timeout value for this Web session and click **Start New Session**. The BladeCenter management-module main window opens.

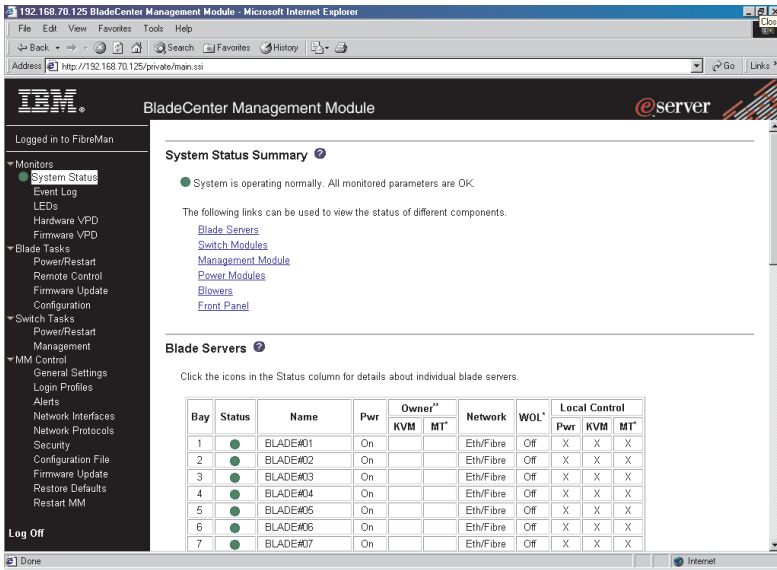


Figure 24. Management-module main window

- In the left navigation pane, under **Switch Tasks**, click **Management**. The Switch Management window opens.

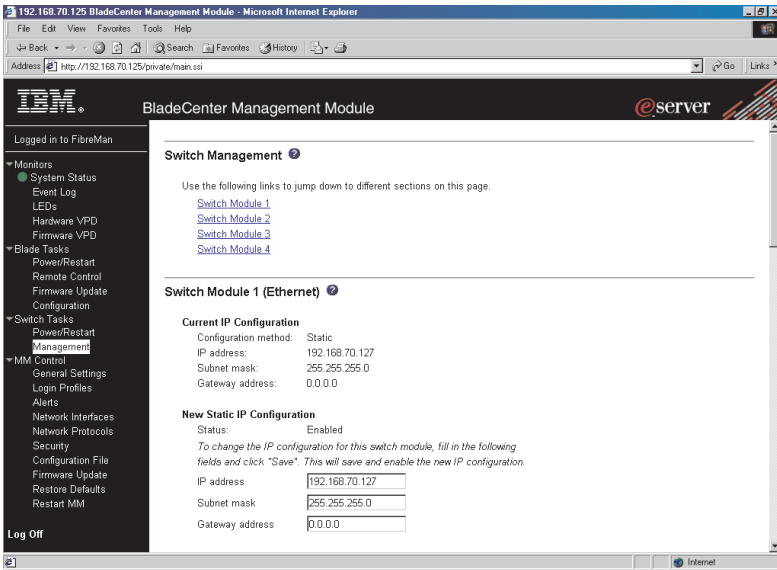


Figure 25. Switch Management window

- Click the link for either switch module 3 or switch module 4. A window similar to the one in Figure 26 opens.

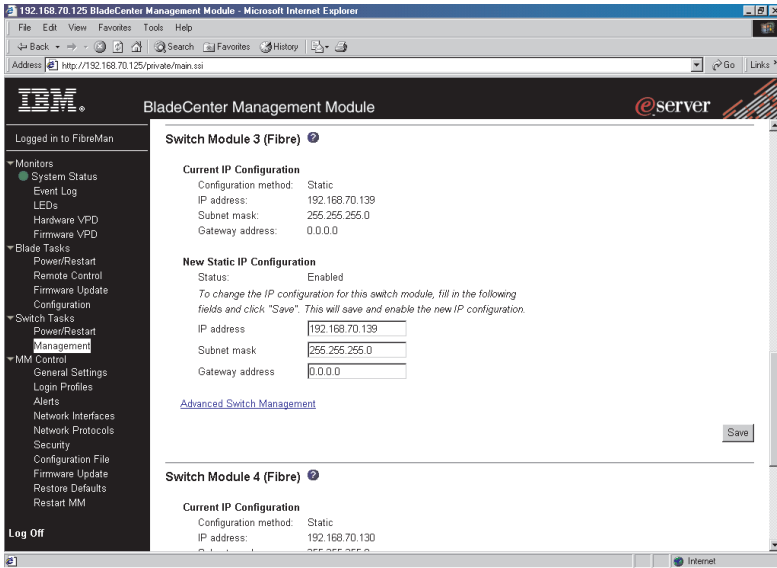


Figure 26. Switch Management window showing switch module 3 example

- Make sure that the IP address is the same in the **Current IP Configuration** and **New Static IP Configuration** sections.

7. Scroll down and click **Advanced Switch Management**. A window similar to the one in Figure 27 opens.

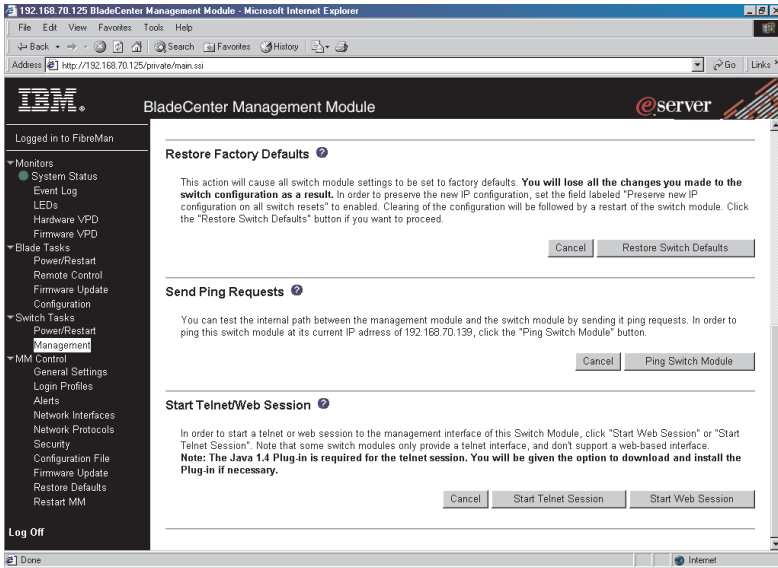


Figure 27. Switch Management window - advanced

8. To start a Web-interface session, scroll down to the **Start Telnet/Web Session** section and click **Start Web Session**.

The switch-module Advanced Web Tools interface window opens, as shown in Figure 28.

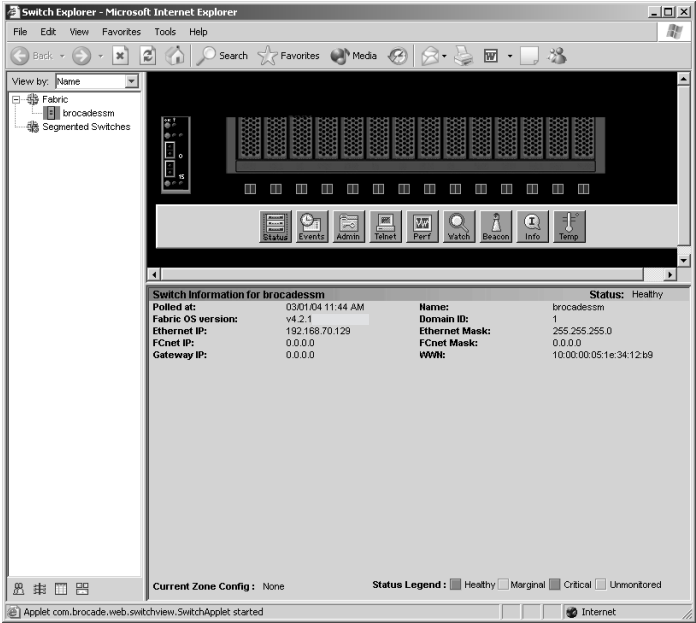


Figure 28. Advanced Web Tools interface window (management-module view)

9. To perform switch-module administrative tasks, click **Admin**, and log in to the switch. In the **User Name** field, type the initial default user name, USERID. In the **Password** field, type the initial default password, PASSWORD (the sixth character is a zero, not the letter O). The user name and password are case sensitive.

For more information about using the Advanced Web Tools interface, see the *Brocade Advanced Web Tools Administrator's Guide v4.2.0* or later on the IBM BladeCenter Documentation CD.

Establishing a Web-interface session through a Web browser

You can access the switch module by IP-enabled devices that are connected to the BladeCenter management module. An Ethernet connection to the management-module external ports on the BladeCenter unit is required. For more information, see the following documents on the IBM *BladeCenter Documentation CD*:

- *@server BladeCenter Type 8677 Installation and User's Guide*
- *BladeCenter Management Module Installation Guide*
- *IBM BladeCenter Management Module User's Guide*

Complete the following steps to establish a Web-interface session through a Web browser:

1. Open a supported Web browser on the network-management workstation.
2. Type one of the following Web addresses in the address field and press Enter. These Web addresses contain default IP addresses.

For I/O bay 3:

`http://192.168.70.129`

For I/O bay 4:

`http://192.168.70.130`

The switch-module Advanced Web Tools interface window opens, as shown in Figure 29.

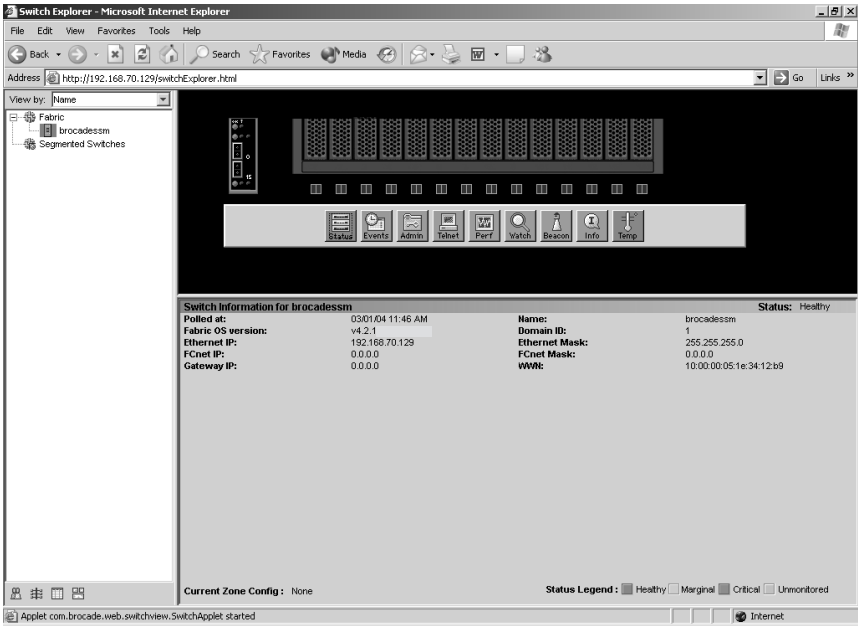


Figure 29. Advanced Web Tools interface window (Web-browser view)

3. To perform switch-module administrative tasks, click **Admin**, and log in to the switch. In the **User Name** field, type the initial default user name, **USERID**. In the **Password** field, type the initial default password, **PASSWORD** (the sixth character is a zero, not the letter O). The user name and password are case sensitive.

For more information about using the Advanced Web Tools interface, see the *Brocade Advanced Web Tools Administrator's Guide v4.2.0* or later on the *IBM BladeCenter Documentation CD*.

Chapter 6. Advanced features for the Brocade Enterprise and Entry SAN switch modules

You can upgrade the switch module to use the following optional features after you purchase them. Except where indicated in Table 3, these features are available for both the Enterprise version and the Entry version of the switch module.

Table 3. *Optional features*

Optional feature	Description
Brocade Advanced Performance Monitoring for IBM @server BladeCenter	<ul style="list-style-type: none"> • Provides advanced performance-monitoring procedures through the Brocade switch module: <ul style="list-style-type: none"> – End-to-end operations – Small computer system interface (SCSI) read operations – SCSI write operations – SCSI read/write operations – SCSI versus IP traffic-usage comparisons • Enables performance tuning of the Brocade SAN
Brocade ISL Trunking for IBM @server BladeCenter	<ul style="list-style-type: none"> • Logically combines the two external switch-module ports (0 and 15) into one 4 Gb trunk link when the ports are connected (inter-switch linked) to another Brocade switch module • Ensures optimum performance for servers that use this trunk
Brocade Performance Bundle for IBM @server BladeCenter	Includes both the Advanced Performance Monitoring and ISL Trunking advanced features
Brocade Extended Fabrics for IBM @server BladeCenter	<p>Enables full bandwidth performance at extended distances up to 100 km (62.14 miles).</p> <p>For more information about configuring the Extended Fabrics feature, see the <i>Release Notes for Brocade Enterprise SAN Switch Module for IBM @server BladeCenter and Brocade Entry SAN Switch Module for IBM @server BladeCenter</i> on the IBM BladeCenter Documentation CD.</p>

Table 3. *Optional features (continued)*

Optional feature	Description
Brocade Advanced Security (Secure OS) for IBM @server BladeCenter	Provides increased security for the Brocade SAN through encryption, digital certificates, digital signatures, and various access-control lists
Brocade Remote Switch for IBM @server BladeCenter	Connects two Brocade fabrics over a wide area network (WAN)
Brocade Entry Switch Upgrade for IBM @server BladeCenter	Increases the scalability of the Entry version from two switches in the fabric to Full SAN Scaling (up to 239 switches). Note: This feature is available only for the Entry version.

To activate and use these optional software features, you must purchase the corresponding license keys. For information about these features, see the following documentation on the IBM *BladeCenter Documentation CD*:

- *Brocade Fabric OS Procedures Guide v4.2.0 or later*
- *Brocade Fabric OS Reference Manual*
- *Release Notes for Brocade Enterprise SAN Switch Module for IBM @server BladeCenter and Brocade Entry SAN Switch Module for IBM @server BladeCenter*
- *Brocade Diagnostic and System Error Message Reference Manual*
- *Brocade Fabric OS Features Guide v4.2.0 or later*
- *Brocade Advanced Web Tools Administrator's Guide v4.2.0 or later*
- *Brocade ISL Trunking User's Guide*
- *Brocade Advanced Performance Monitor User's Guide*

See "Related documentation" on page 7 for descriptions of these documents.

The Enterprise version comes with a Full SAN Scaling (up to 239 switches) license. This license allows for up to 239 domain attachments within a fabric. The Entry version is limited to a two-domain fabric. The Entry version is upgradeable through the purchase of an optional license key that provides Full SAN Scaling capabilities.

Before you can upgrade and install a new license key, you must determine the license identifier (ID) of the switch module. Use the Telnet program to log in to the switch module as described in Chapter 4, "Configuring the switch module through the Telnet interface," on page 33, and run the **licenseidshow** command to determine this value. Record the license ID value for future reference. For information about this command, see the *Brocade Fabric OS Reference Manual* on the IBM *BladeCenter Documentation CD*.

To purchase and obtain a license key for an optional feature, go to www.ibm.com/servers/eserver/bladecenter/ or call IBM. In the U.S. and Canada, call 1-800-IBM-SERV (1-800-426-7378). For all other countries, go to <http://www.ibm.com/planetwide/> for support telephone numbers. A license key will be provided through the Web site that is described in the documentation that you receive after you purchase the feature.

To install an optional feature on the switch, you must add the corresponding license to the list of current features for the switch. Use the Telnet program to log in to the switch module as described in Chapter 4, "Configuring the switch module through the Telnet interface," on page 33, and run the **licenseadd** "key" command, where *key* is the license key for the new feature. For information about this command, see the *Brocade Fabric OS Reference Manual* on the IBM *BladeCenter Documentation CD*.

To make sure that the license has been successfully added to the switch key, run the **licenseshow** command. For information about this command, see the *Brocade Fabric OS Reference Manual* on the IBM *BladeCenter Documentation CD*.

Appendix A. Getting help and technical assistance

If you need help, service, or technical assistance or just want more information about IBM products, you will find a wide variety of sources available from IBM to assist you. This appendix contains information about where to go for additional information about IBM and IBM products, what to do if you experience a problem with your @server, xSeries, or IntelliStation® system, and whom to call for service, if it is necessary.

Before you call

Before you call, make sure that you have taken these steps to try to solve the problem yourself:

- Check all cables to make sure that they are connected.
- Check the power switches to make sure that the system is turned on.
- Use the troubleshooting information in your system documentation, and use the diagnostic tools that come with your system. Information about diagnostic tools is in the *@server BladeCenter Type 8677 Hardware Maintenance Manual and Troubleshooting Guide*, the *Brocade Diagnostic and System Error Message Reference Manual*, and the *Brocade Fabric OS Procedures Guide* on the *IBM BladeCenter Documentation CD* or in the *IntelliStation Hardware Maintenance Manual* at the IBM Support Web site.
- Go to the IBM Support Web site at <http://www.ibm.com/pc/support/> to check for technical information, hints, tips, and new device drivers or to submit a request for information.

You can solve many problems without outside assistance by following the troubleshooting procedures that IBM provides in the online help or in the publications that are provided with your system and software. The information that comes with your system also describes the diagnostic tests that you can perform. Most @server, xSeries, and IntelliStation systems, operating systems, and programs come with information that contains troubleshooting procedures and explanations of error messages and error codes. If you suspect a software problem, see the information for the operating system or program.

Using the documentation

Information about your IBM @server, xSeries, or IntelliStation system and preinstalled software, if any, is available in the documentation that comes with your system. That documentation includes printed books, online books, readme files, and help files. See the troubleshooting information in your system documentation for instructions for using the diagnostic programs. The troubleshooting information or the diagnostic programs might tell you that you

need additional or updated device drivers or other software. IBM maintains pages on the World Wide Web where you can get the latest technical information and download device drivers and updates. To access these pages, go to <http://www.ibm.com/pc/support/> and follow the instructions. Also, you can order publications through the IBM Publications Ordering System at <http://www.elink.ibm.com/public/applications/publications/cgi-bin/pbi.cgi>.

Getting help and information from the World Wide Web

On the World Wide Web, the IBM Web site has up-to-date information about IBM @server, xSeries, and IntelliStation products, services, and support. The address for IBM @server and xSeries information is <http://www.ibm.com/eserver/xseries/>. The address for IBM IntelliStation information is <http://www.ibm.com/pc/intellistation/>.

You can find service information for your IBM products, including supported options, at <http://www.ibm.com/pc/support/>.

Software service and support

Through IBM Support Line, you can get telephone assistance, for a fee, with usage, configuration, and software problems with @server and xSeries servers, IntelliStation workstations, and appliances. For information about which products are supported by Support Line in your country or region, go to <http://www.ibm.com/services/sl/products/>.

For more information about Support Line and other IBM services, go to <http://www.ibm.com/services/>, or go to <http://www.ibm.com/planetwide/> for support telephone numbers. In the U.S. and Canada, call 1-800-IBM-SERV (1-800-426-7378).

Hardware service and support

You can receive hardware service through IBM Services or through your IBM reseller, if your reseller is authorized by IBM to provide warranty service. Go to <http://www.ibm.com/planetwide/> for support telephone numbers, or in the U.S. and Canada, call 1-800-IBM-SERV (1-800-426-7378).

In the U.S. and Canada, hardware service and support is available 24 hours a day, 7 days a week. In the U.K., these services are available Monday through Friday, from 9 a.m. to 6 p.m.

Appendix B. IBM Statement of Limited Warranty Z125-4753-07 11/2002

Part 1 - General Terms

Part 1 - General Terms

*This Statement of Limited Warranty includes Part 1 - General Terms, Part 2 - Country-unique Terms, and Part 3 - Warranty Information. The terms of Part 2 replace or modify those of Part 1. The warranties provided by IBM in this Statement of Limited Warranty apply only to Machines you purchase for your use, and not for resale. The term "Machine" means an IBM machine, its features, conversions, upgrades, elements, or accessories, or any combination of them. The term "Machine" does not include any software programs, whether pre-loaded with the Machine, installed subsequently or otherwise. **Nothing in this Statement of Limited Warranty affects any statutory rights of consumers that cannot be waived or limited by contract.***

What this Warranty Covers

IBM warrants that each Machine 1) is free from defects in materials and workmanship and 2) conforms to IBM's Official Published Specifications ("Specifications") which are available on request. The warranty period for the Machine starts on the original Date of Installation and is specified in Part 3 - Warranty Information. The date on your invoice or sales receipt is the Date of Installation unless IBM or your reseller informs you otherwise. Many features, conversions, or upgrades involve the removal of parts and their return to IBM. A part that replaces a removed part will assume the warranty service status of the removed part. Unless IBM specifies otherwise, these warranties apply only in the country or region in which you purchased the Machine.

THESE WARRANTIES ARE YOUR EXCLUSIVE WARRANTIES AND REPLACE ALL OTHER WARRANTIES OR CONDITIONS, EXPRESS OR IMPLIED, INCLUDING, BUT NOT LIMITED TO, THE IMPLIED WARRANTIES OR CONDITIONS OF MERCHANTABILITY AND FITNESS FOR A PARTICULAR PURPOSE. SOME STATES OR JURISDICTIONS DO NOT ALLOW THE EXCLUSION OF EXPRESS OR IMPLIED WARRANTIES, SO THE ABOVE EXCLUSION MAY NOT APPLY TO YOU. IN THAT EVENT, SUCH WARRANTIES ARE LIMITED IN DURATION TO THE WARRANTY PERIOD. NO WARRANTIES APPLY AFTER THAT PERIOD. SOME STATES OR JURISDICTIONS DO NOT ALLOW LIMITATIONS ON HOW LONG AN IMPLIED WARRANTY LASTS, SO THE ABOVE LIMITATION MAY NOT APPLY TO YOU.

What this Warranty Does not Cover

This warranty does not cover the following:

- any software programs, whether pre-loaded or shipped with the Machine, or installed subsequently;
- failure resulting from misuse (including but not limited to use of any Machine capacity or capability, other than that authorized by IBM in writing), accident, modification, unsuitable physical or operating environment, or improper maintenance by you;
- failure caused by a product for which IBM is not responsible; and
- any non-IBM products, including those that IBM may procure and provide with or integrate into an IBM Machine at your request.

The warranty is voided by removal or alteration of identification labels on the Machine or its parts.

IBM does not warrant uninterrupted or error-free operation of a Machine.

Any technical or other support provided for a Machine under warranty, such as assistance via telephone with “how-to” questions and those regarding Machine set-up and installation, is provided **WITHOUT WARRANTIES OF ANY KIND**.

How to Obtain Warranty Service

If the Machine does not function as warranted during the warranty period, contact IBM or your reseller to obtain warranty service. If you do not register the Machine with IBM, you may be required to present proof of purchase as evidence of your entitlement to warranty service.

What IBM Will Do to Correct Problems

When you call for service, you must follow the problem determination and resolution procedures that IBM specifies. A technician will attempt to make an initial diagnosis of your problem and help you resolve it over the telephone.

The type of warranty service applicable to your Machine is specified in Part 3 - Warranty Information.

You are responsible for downloading and installing designated Machine Code (microcode, basic input/output system code (called “BIOS”), utility programs, device drivers, and diagnostics delivered with an IBM Machine) and other software updates from an IBM Internet Web site or from other electronic media, and following the instructions that IBM provides.

If your problem can be resolved with a Customer Replaceable Unit (“CRU”) (e.g., keyboard, mouse, speaker, memory, hard disk drive and other easily replaceable parts), IBM will ship these parts to you for replacement by you.

If the Machine does not function as warranted during the warranty period and your problem cannot be resolved over the telephone, through your application of Machine Code or software updates, or with a CRU, IBM or your reseller, if approved by IBM to provide warranty service, will either, at its discretion, 1) repair it to make it function as warranted, or 2) replace it with one that is at least functionally equivalent. If IBM is unable to do either, you may return the Machine to your place of purchase and your money will be refunded.

IBM or your reseller will also manage and install selected engineering changes that apply to the Machine.

Exchange of a Machine or Part

When the warranty service involves the exchange of a Machine or part, the item IBM or your reseller replaces becomes its property and the replacement becomes yours. You represent that all removed items are genuine and unaltered. The replacement may not be new, but will be in good working order and at least functionally equivalent to the item replaced. The replacement assumes the warranty service status of the replaced item.

Your Additional Responsibilities

Before IBM or your reseller exchanges a Machine or part, you agree to remove all features, parts, options, alterations, and attachments not under warranty service.

You also agree to:

1. ensure that the Machine is free of any legal obligations or restrictions that prevent its exchange;
2. obtain authorization from the owner to have IBM or your reseller service a Machine that you do not own; and
3. where applicable, before service is provided:
 - a. follow the service request procedures that IBM or your reseller provides;
 - b. backup or secure all programs, data, and funds contained in the Machine;
 - c. provide IBM or your reseller with sufficient, free, and safe access to your facilities to permit IBM to fulfill its obligations; and
 - d. inform IBM or your reseller of changes in the Machine’s location.
4. (a) ensure all information about identified or identifiable individuals (Personal Data) is deleted from the Machine (to the extent technically possible), (b) allow IBM, your reseller or an IBM supplier to process on

your behalf any remaining Personal Data as IBM or your reseller considers necessary to fulfill its obligations under this Statement of Limited Warranty (which may include shipping the Machine for such processing to other IBM service locations around the world), and (c) ensure that such processing complies with any laws applicable to such Personal Data.

Limitation of Liability

IBM is responsible for loss of, or damage to, your Machine only while it is 1) in IBM’s possession or 2) in transit in those cases where IBM is responsible for the transportation charges.

Neither IBM nor your reseller are responsible for any of your confidential, proprietary or personal information contained in a Machine which you return to IBM for any reason. You should remove all such information from the Machine prior to its return.

Circumstances may arise where, because of a default on IBM’s part or other liability, you are entitled to recover damages from IBM. In each such instance, regardless of the basis on which you are entitled to claim damages from IBM (including fundamental breach, negligence, misrepresentation, or other contract or tort claim), except for any liability that cannot be waived or limited by applicable laws, IBM is liable for no more than

1. damages for bodily injury (including death) and damage to real property and tangible personal property; and
2. the amount of any other actual direct damages, up to the charges (if recurring, 12 months’ charges apply) for the Machine that is subject of the claim. For purposes of this item, the term “Machine” includes Machine Code and Licensed Internal Code (“LIC”).

This limit also applies to IBM’s suppliers and your reseller. It is the maximum for which IBM, its suppliers, and your reseller are collectively responsible.

UNDER NO CIRCUMSTANCES IS IBM, ITS SUPPLIERS OR RESELLERS LIABLE FOR ANY OF THE FOLLOWING EVEN IF INFORMED OF THEIR POSSIBILITY: 1) THIRD PARTY CLAIMS AGAINST YOU FOR DAMAGES (OTHER THAN THOSE UNDER THE FIRST ITEM LISTED ABOVE); 2) LOSS OF, OR DAMAGE TO, DATA; 3) SPECIAL, INCIDENTAL, OR INDIRECT DAMAGES OR FOR ANY ECONOMIC CONSEQUENTIAL DAMAGES; OR 4) LOST PROFITS, BUSINESS REVENUE, GOODWILL OR ANTICIPATED SAVINGS. SOME STATES OR JURISDICTIONS DO NOT ALLOW THE EXCLUSION OR LIMITATION OF INCIDENTAL OR CONSEQUENTIAL DAMAGES, SO THE ABOVE LIMITATION OR EXCLUSION MAY NOT APPLY TO YOU. SOME STATES OR

JURISDICTIONS DO NOT ALLOW LIMITATIONS ON HOW LONG AN IMPLIED WARRANTY LASTS, SO THE ABOVE LIMITATION MAY NOT APPLY TO YOU.

Governing Law

Both you and IBM consent to the application of the laws of the country in which you acquired the Machine to govern, interpret, and enforce all of your and IBM's rights, duties, and obligations arising from, or relating in any manner to, the subject matter of this Statement of Limited Warranty, without regard to conflict of law principles.

THESE WARRANTIES GIVE YOU SPECIFIC LEGAL RIGHTS AND YOU MAY ALSO HAVE OTHER RIGHTS WHICH VARY FROM STATE TO STATE OR JURISDICTION TO JURISDICTION.

Jurisdiction

All of our rights, duties, and obligations are subject to the courts of the country in which you acquired the Machine.

Part 2 - Country-unique Terms

AMERICAS

ARGENTINA

Governing Law: *The following is added after the first sentence:*

Any litigation arising from this Statement of Limited Warranty will be settled exclusively by the Ordinary Commercial Court of the city of Buenos Aires.

BRAZIL

Governing Law: *The following is added after the first sentence:*

Any litigation arising from this Statement of Limited Warranty will be settled exclusively by the court of Rio de Janeiro, RJ.

PERU

Limitation of Liability: *The following is added at the end of this section:*

In accordance with Article 1328 of the Peruvian Civil Code the limitations and exclusions specified in this section will not apply to damages caused by IBM's willful misconduct ("dolo") or gross negligence ("culpa inexcusable").

NORTH AMERICA

How to Obtain Warranty Service: *The following is added to this Section:*

To obtain warranty service from IBM in Canada or the United States, call 1-800-IBM-SERV (426-7378).

CANADA

Limitation of Liability: *The following replaces item 1 of this section:*

1. damages for bodily injury (including death) or physical harm to real property and tangible personal property caused by IBM's negligence; and

Governing Law: *The following replaces "laws of the country in which you acquired the Machine" in the first sentence:*

laws in the Province of Ontario.

UNITED STATES

Governing Law: *The following replaces "laws of the country in which you acquired the Machine" in the first sentence:*

laws of the State of New York.

ASIA PACIFIC

AUSTRALIA

What this Warranty Covers: *The following paragraph is added to this section:*

The warranties specified in this Section are in addition to any rights you may have under the Trade Practices Act 1974 or other similar legislation and are only limited to the extent permitted by the applicable legislation.

Limitation of Liability: *The following is added to this section:*

Where IBM is in breach of a condition or warranty implied by the Trade Practices Act 1974 or other similar legislation, IBM's liability is limited to the repair or replacement of the goods or the supply of equivalent goods. Where that condition or warranty relates to right to sell, quiet possession or clear title, or the goods are of a kind ordinarily acquired for personal, domestic or household use or consumption, then none of the limitations in this paragraph apply.

Governing Law: *The following replaces "laws of the country in which you acquired the Machine" in the first sentence:*

laws of the State or Territory.

CAMBODIA, LAOS, AND VIETNAM

Governing Law: *The following replaces “laws of the country in which you acquired the Machine” in the first sentence:*

laws of the State of New York, United States of America.

CAMBODIA, INDONESIA, LAOS, AND VIETNAM

Arbitration: *The following is added under this heading:*

Disputes arising out of or in connection with this Statement of Limited Warranty shall be finally settled by arbitration which shall be held in Singapore in accordance with the Arbitration Rules of Singapore International Arbitration Center (“SIAC Rules”) then in effect. The arbitration award shall be final and binding for the parties without appeal and shall be in writing and set forth the findings of fact and the conclusions of law.

The number of arbitrators shall be three, with each side to the dispute being entitled to appoint one arbitrator. The two arbitrators appointed by the parties shall appoint a third arbitrator who shall act as chairman of the proceedings. Vacancies in the post of chairman shall be filled by the president of the SIAC. Other vacancies shall be filled by the respective nominating party. Proceedings shall continue from the stage they were at when the vacancy occurred.

If one of the parties refuses or otherwise fails to appoint an arbitrator within 30 days of the date the other party appoints its, the first appointed arbitrator shall be the sole arbitrator, provided that the arbitrator was validly and properly appointed.

All proceedings shall be conducted, including all documents presented in such proceedings, in the English language. The English language version of this Statement of Limited Warranty prevails over any other language version.

HONG KONG S.A.R. OF CHINA AND MACAU S.A.R. OF CHINA

Governing Law: *The following replaces “laws of the country in which you acquired the Machine” in the first sentence:*

laws of Hong Kong Special Administrative Region of China.

INDIA

Limitation of Liability: *The following replaces items 1 and 2 of this section:*

1. liability for bodily injury (including death) or damage to real property and tangible personal property will be limited to that caused by IBM’s negligence; and
2. as to any other actual damage arising in any situation involving nonperformance by IBM pursuant to, or in any way related to the subject

of this Statement of Limited Warranty, the charge paid by you for the individual Machine that is the subject of the claim. For purposes of this item, the term “Machine” includes Machine Code and Licensed Internal Code (“LIC”).

Arbitration: *The following is added under this heading:*

Disputes arising out of or in connection with this Statement of Limited Warranty shall be finally settled by arbitration which shall be held in Bangalore, India in accordance with the laws of India then in effect. The arbitration award shall be final and binding for the parties without appeal and shall be in writing and set forth the findings of fact and the conclusions of law.

The number of arbitrators shall be three, with each side to the dispute being entitled to appoint one arbitrator. The two arbitrators appointed by the parties shall appoint a third arbitrator who shall act as chairman of the proceedings. Vacancies in the post of chairman shall be filled by the president of the Bar Council of India. Other vacancies shall be filled by the respective nominating party. Proceedings shall continue from the stage they were at when the vacancy occurred.

If one of the parties refuses or otherwise fails to appoint an arbitrator within 30 days of the date the other party appoints its, the first appointed arbitrator shall be the sole arbitrator, provided that the arbitrator was validly and properly appointed.

All proceedings shall be conducted, including all documents presented in such proceedings, in the English language. The English language version of this Statement of Limited Warranty prevails over any other language version.

JAPAN

Governing Law: *The following sentence is added to this section:*

Any doubts concerning this Statement of Limited Warranty will be initially resolved between us in good faith and in accordance with the principle of mutual trust.

MALAYSIA

Limitation of Liability: *The word “SPECIAL” in item 3 of the fifth paragraph is deleted.*

NEW ZEALAND

What this Warranty Covers: *The following paragraph is added to this section:*

The warranties specified in this section are in addition to any rights you may

have under the Consumer Guarantees Act 1993 or other legislation which cannot be excluded or limited. The Consumer Guarantees Act 1993 will not apply in respect of any goods which IBM provides, if you require the goods for the purposes of a business as defined in that Act.

Limitation of Liability: *The following is added to this section:*

Where Machines are not acquired for the purposes of a business as defined in the Consumer Guarantees Act 1993, the limitations in this section are subject to the limitations in that Act.

PEOPLE'S REPUBLIC OF CHINA (PRC)

Governing Law: *The following replaces "laws of the country in which you acquired the Machine" in the first sentence:*

laws of the State of New York, United States of America (except when local law requires otherwise).

PHILIPPINES

Limitation of Liability: *Item 3 in the fifth paragraph is replaced by the following:*

SPECIAL (INCLUDING NOMINAL AND EXEMPLARY DAMAGES), MORAL, INCIDENTAL, OR INDIRECT DAMAGES FOR ANY ECONOMIC CONSEQUENTIAL DAMAGES; OR

Arbitration: *The following is added under this heading:*

Disputes arising out of or in connection with this Statement of Limited Warranty shall be finally settled by arbitration which shall be held in Metro Manila, Philippines in accordance with the laws of the Philippines then in effect. The arbitration award shall be final and binding for the parties without appeal and shall be in writing and set forth the findings of fact and the conclusions of law.

The number of arbitrators shall be three, with each side to the dispute being entitled to appoint one arbitrator. The two arbitrators appointed by the parties shall appoint a third arbitrator who shall act as chairman of the proceedings. Vacancies in the post of chairman shall be filled by the president of the Philippine Dispute Resolution Center, Inc. Other vacancies shall be filled by the respective nominating party. Proceedings shall continue from the stage they were at when the vacancy occurred.

If one of the parties refuses or otherwise fails to appoint an arbitrator within 30 days of the date the other party appoints its, the first appointed arbitrator shall be the sole arbitrator, provided that the arbitrator was validly and properly appointed.

All proceedings shall be conducted, including all documents presented in such proceedings, in the English language. The English language version of this Statement of Limited Warranty prevails over any other language version.

SINGAPORE

Limitation of Liability: *The words "SPECIAL" and "ECONOMIC" in item 3 in the fifth paragraph are deleted.*

EUROPE, MIDDLE EAST, AFRICA (EMEA)

THE FOLLOWING TERMS APPLY TO ALL EMEA COUNTRIES:

The terms of this Statement of Limited Warranty apply to Machines purchased from IBM or an IBM reseller.

How to Obtain Warranty Service: If you purchase a Machine in Austria, Belgium, Cyprus, Denmark, Estonia, Finland, France, Germany, Greece, Iceland, Ireland, Italy, Latvia, Liechtenstein, Lithuania, Luxembourg, Monaco, Netherlands, Norway, Portugal, Spain, San Marino, Sweden, Switzerland, United Kingdom or Vatican State, you may obtain warranty service for that Machine in any of those countries from either (1) an IBM reseller approved to perform warranty service or (2) from IBM, provided the Machine has been announced and made available by IBM in the country in which you wish to obtain service. If you purchased a Personal Computer Machine in Albania, Armenia, Belarus, Bosnia and Herzegovina, Bulgaria, Croatia, Czech Republic, Georgia, Hungary, Kazakhstan, Kyrgyzstan, Federal Republic of Yugoslavia, Former Yugoslav Republic of Macedonia (FYROM), Moldova, Poland, Romania, Russia, Slovak Republic, Slovenia, or Ukraine, you may obtain warranty service for that Machine in any of those countries from either (1) an IBM reseller approved to perform warranty service or (2) from IBM.

If you purchase a Machine in a Middle Eastern or African country, you may obtain warranty service for that Machine from the IBM entity within the country of purchase, if that IBM entity provides warranty service in that country, or from an IBM reseller, approved by IBM to perform warranty service on that Machine in that country. Warranty service in Africa is available within 50 kilometers of an IBM approved service provider. You are responsible for transportation costs for Machines located outside 50 kilometers of an IBM approved service provider.

*Add the following paragraph in **Western Europe** (Austria, Belgium, Cyprus, Denmark, Finland, France, Germany, Greece, Iceland, Ireland, Italy, Liechtenstein, Luxembourg, Monaco, Netherlands, Norway, Portugal, Spain, San Marino, Sweden, Switzerland, United Kingdom, Vatican State):*

The warranty for Machines acquired in Western Europe shall be valid and applicable in all Western Europe countries provided the Machines have been announced and made available in such countries.

Governing Law:

The phrase “the laws of the country in which you acquired the Machine” is replaced by:

- 1) “the laws of Austria” in **Albania, Armenia, Azerbaijan, Belarus, Bosnia-Herzegovina, Bulgaria, Croatia, Georgia, Hungary, Kazakhstan, Kyrgyzstan, FYR Macedonia, Moldova, Poland, Romania, Russia, Slovakia, Slovenia, Tajikistan, Turkmenistan, Ukraine, Uzbekistan, and FR Yugoslavia;**
- 2) “the laws of France” in **Algeria, Benin, Burkina Faso, Cameroon, Cape Verde, Central African Republic, Chad, Comoros, Congo Republic, Djibouti, Democratic Republic of Congo, Equatorial Guinea, French Guiana, French Polynesia, Gabon, Gambia, Guinea, Guinea-Bissau, Ivory Coast, Lebanon, Madagascar, Mali, Mauritania, Mauritius, Mayotte, Morocco, New Caledonia, Niger, Reunion, Senegal, Seychelles, Togo, Tunisia, Vanuatu, and Wallis & Futuna;**
- 3) “the laws of Finland” in **Estonia, Latvia, and Lithuania;**
- 4) “the laws of England” in **Angola, Bahrain, Botswana, Burundi, Egypt, Eritrea, Ethiopia, Ghana, Jordan, Kenya, Kuwait, Liberia, Malawi, Malta, Mozambique, Nigeria, Oman, Pakistan, Qatar, Rwanda, Sao Tome, Saudi Arabia, Sierra Leone, Somalia, Tanzania, Uganda, United Arab Emirates, the United Kingdom, West Bank/Gaza, Yemen, Zambia, and Zimbabwe;** and
- 5) “the laws of South Africa” in **South Africa, Namibia, Lesotho and Swaziland.**

Jurisdiction: *The following exceptions are added to this section:*

- 1) In **Austria** the choice of jurisdiction for all disputes arising out of this Statement of Limited Warranty and relating thereto, including its existence, will be the competent court of law in Vienna, Austria (Inner-City);
- 2) in **Angola, Bahrain, Botswana, Burundi, Egypt, Eritrea, Ethiopia, Ghana, Jordan, Kenya, Kuwait, Liberia, Malawi, Malta, Mozambique, Nigeria, Oman, Pakistan, Qatar, Rwanda, Sao Tome, Saudi Arabia, Sierra Leone, Somalia, Tanzania, Uganda, United Arab Emirates, West Bank/Gaza, Yemen, Zambia, and Zimbabwe** all disputes arising out of this Statement of Limited Warranty or related to its execution, including summary proceedings, will be submitted to the exclusive jurisdiction of the English courts;
- 3) in **Belgium and Luxembourg**, all disputes arising out of this Statement of Limited Warranty or related to its interpretation or its execution, the law, and the courts of the

capital city, of the country of your registered office and/or commercial site location only are competent; 4) **in France, Algeria, Benin, Burkina Faso, Cameroon, Cape Verde, Central African Republic, Chad, Comoros, Congo Republic, Djibouti, Democratic Republic of Congo, Equatorial Guinea, French Guiana, French Polynesia, Gabon, Gambia, Guinea, Guinea-Bissau, Ivory Coast, Lebanon, Madagascar, Mali, Mauritania, Mauritius, Mayotte, Morocco, New Caledonia, Niger, Reunion, Senegal, Seychelles, Togo, Tunisia, Vanuatu, and Wallis & Futuna** all disputes arising out of this Statement of Limited Warranty or related to its violation or execution, including summary proceedings, will be settled exclusively by the Commercial Court of Paris; 5) **in Russia**, all disputes arising out of or in relation to the interpretation, the violation, the termination, the nullity of the execution of this Statement of Limited Warranty shall be settled by Arbitration Court of Moscow; 6) **in South Africa, Namibia, Lesotho and Swaziland**, both of us agree to submit all disputes relating to this Statement of Limited Warranty to the jurisdiction of the High Court in Johannesburg; 7) **in Turkey** all disputes arising out of or in connection with this Statement of Limited Warranty shall be resolved by the Istanbul Central (Sultanahmet) Courts and Execution Directorates of Istanbul, the Republic of Turkey; 8) in each of the following specified countries, any legal claim arising out of this Statement of Limited Warranty will be brought before, and settled exclusively by, the competent court of a) Athens for **Greece**, b) Tel Aviv-Jaffa for **Israel**, c) Milan for **Italy**, d) Lisbon for **Portugal**, and e) Madrid for **Spain**; and 9) **in the United Kingdom**, both of us agree to submit all disputes relating to this Statement of Limited Warranty to the jurisdiction of the English courts.

Arbitration: *The following is added under this heading:*

In Albania, Armenia, Azerbaijan, Belarus, Bosnia-Herzegovina, Bulgaria, Croatia, Georgia, Hungary, Kazakhstan, Kyrgyzstan, FYR Macedonia, Moldova, Poland, Romania, Russia, Slovakia, Slovenia, Tajikistan, Turkmenistan, Ukraine, Uzbekistan, and FR Yugoslavia all disputes arising out of this Statement of Limited Warranty or related to its violation, termination or nullity will be finally settled under the Rules of Arbitration and Conciliation of the International Arbitral Center of the Federal Economic Chamber in Vienna (Vienna Rules) by three arbitrators appointed in accordance with these rules. The arbitration will be held in Vienna, Austria, and the official language of the proceedings will be English. The decision of the arbitrators will be final and binding upon both parties. Therefore, pursuant to paragraph 598 (2) of the Austrian Code of Civil Procedure, the parties expressly waive the application of paragraph 595 (1) figure 7 of the Code. IBM may, however, institute proceedings in a competent court in the country of installation.

In Estonia, Latvia and Lithuania all disputes arising in connection with this Statement of Limited Warranty will be finally settled in arbitration that will be held in Helsinki, Finland in accordance with the arbitration laws of Finland then in effect. Each party will appoint one arbitrator. The arbitrators will then jointly appoint the chairman. If arbitrators cannot agree on the chairman, then the Central Chamber of Commerce in Helsinki will appoint the chairman.

EUROPEAN UNION (EU)

THE FOLLOWING TERMS APPLY TO ALL EU COUNTRIES:

Consumers have legal rights under applicable national legislation governing the sale of consumer goods. Such rights are not affected by the warranties provided in this Statement of Limited Warranty.

How to Obtain Warranty Service: *The following is added to this section:*

To obtain warranty service from IBM in EU countries, see the telephone listing in Part 3 - Warranty Information.

You may contact IBM at the following address:

IBM Warranty & Service Quality Dept.
PO Box 30
Spango Valley
Greenock
Scotland PA16 0AH

AUSTRIA, DENMARK, FINLAND, GREECE, ITALY, NETHERLANDS, PORTUGAL, SPAIN, SWEDEN AND SWITZERLAND

Limitation of Liability: *The following replaces the terms of this section in its entirety:*

Except as otherwise provided by mandatory law:

1. IBM's liability for any damages and losses that may arise as a consequence of the fulfillment of its obligations under or in connection with this Statement of Limited Warranty or due to any other cause related to this Statement of Limited Warranty is limited to the compensation of only those damages and losses proved and actually arising as an immediate and direct consequence of the non-fulfillment of such obligations (if IBM is at fault) or of such cause, for a maximum amount equal to the charges you paid for the Machine. For purposes of this item, the term "Machine" includes Machine Code and Licensed Internal Code ("LIC").

The above limitation shall not apply to damages for bodily injuries (including death) and damages to real property and tangible personal property for which IBM is legally liable.

2. **UNDER NO CIRCUMSTANCES IS IBM, ITS SUPPLIERS OR RESELLERS LIABLE FOR ANY OF THE FOLLOWING, EVEN IF INFORMED OF THEIR POSSIBILITY: 1) LOSS OF, OR DAMAGE TO, DATA; 2) INCIDENTAL OR INDIRECT DAMAGES, OR FOR ANY ECONOMIC CONSEQUENTIAL DAMAGES; 3) LOST PROFITS, EVEN IF THEY ARISE AS AN IMMEDIATE CONSEQUENCE OF THE EVENT THAT GENERATED THE DAMAGES; OR 4) LOSS OF BUSINESS, REVENUE, GOODWILL, OR ANTICIPATED SAVINGS.**

FRANCE AND BELGIUM

Limitation of Liability: *The following replaces the terms of this section in its entirety:*

Except as otherwise provided by mandatory law:

1. IBM's liability for any damages and losses that may arise as a consequence of the fulfillment of its obligations under or in connection with this Statement of Limited Warranty is limited to the compensation of only those damages and losses proved and actually arising as an immediate and direct consequence of the non-fulfillment of such obligations (if IBM is at fault), for a maximum amount equal to the charges you paid for the Machine that has caused the damages. For purposes of this item, the term "Machine" includes Machine Code and Licensed Internal Code ("LIC").

The above limitation shall not apply to damages for bodily injuries (including death) and damages to real property and tangible personal property for which IBM is legally liable.

2. **UNDER NO CIRCUMSTANCES IS IBM, ITS SUPPLIERS OR RESELLERS LIABLE FOR ANY OF THE FOLLOWING, EVEN IF INFORMED OF THEIR POSSIBILITY: 1) LOSS OF, OR DAMAGE TO, DATA; 2) INCIDENTAL OR INDIRECT DAMAGES, OR FOR ANY ECONOMIC CONSEQUENTIAL DAMAGES; 3) LOST PROFITS, EVEN IF THEY ARISE AS AN IMMEDIATE CONSEQUENCE OF THE EVENT THAT GENERATED THE DAMAGES; OR 4) LOSS OF BUSINESS, REVENUE, GOODWILL, OR ANTICIPATED SAVINGS.**

THE FOLLOWING TERMS APPLY TO THE COUNTRY SPECIFIED:

AUSTRIA

What this Warranty Covers: *The following replaces the first sentence of the first paragraph of this section:*

The warranty for an IBM Machine covers the functionality of the Machine for its normal use and the Machine's conformity to its Specifications.

The following paragraphs are added to this section:

The warranty period for Machines is 12 months from the date of delivery. The limitation period for consumers in action for breach of warranty is the statutory period as a minimum. In case IBM or your reseller is unable to repair an IBM Machine, you can alternatively ask for a partial refund as far as justified by the reduced value of the unrepaired Machine or ask for a cancellation of the respective agreement for such Machine and get your money refunded.

The second paragraph does not apply.

What IBM Will Do to Correct Problems: *The following is added to this section:*

During the warranty period, transportation for delivery of the failing Machine to IBM will be at IBM's expense.

Limitation of Liability: *The following paragraph is added to this section:*

The limitations and exclusions specified in the Statement of Limited Warranty will not apply to damages caused by IBM with fraud or gross negligence and for express warranty.

The following sentence is added to the end of item 2:

IBM's liability under this item is limited to the violation of essential contractual terms in cases of ordinary negligence.

EGYPT

Limitation of Liability: *The following replaces item 2 in this section:*

as to any other actual direct damages, IBM's liability will be limited to the total amount you paid for the Machine that is the subject of the claim. For purposes of this item, the term "Machine" includes Machine Code and Licensed Internal Code ("LIC").

Applicability of suppliers and resellers (unchanged).

FRANCE

Limitation of Liability: *The following replaces the second sentence of the first paragraph of this section:*

In such instances, regardless of the basis on which you are entitled to claim damages from IBM, IBM is liable for no more than: (items 1 and 2 unchanged).

GERMANY

What this Warranty Covers: *The following replaces the first sentence of the first paragraph of this section:*

The warranty for an IBM Machine covers the functionality of the Machine for its normal use and the Machine's conformity to its Specifications.

The following paragraphs are added to this section:

The minimum warranty period for Machines is twelve months. In case IBM or your reseller is unable to repair an IBM Machine, you can alternatively ask for a partial refund as far as justified by the reduced value of the unrepaired Machine or ask for a cancellation of the respective agreement for such Machine and get your money refunded.

The second paragraph does not apply.

What IBM Will Do to Correct Problems: *The following is added to this section:*

During the warranty period, transportation for delivery of the failing Machine to IBM will be at IBM's expense.

Limitation of Liability: *The following paragraph is added to this section:*

The limitations and exclusions specified in the Statement of Limited Warranty will not apply to damages caused by IBM with fraud or gross negligence and for express warranty.

The following sentence is added to the end of item 2:

IBM's liability under this item is limited to the violation of essential contractual terms in cases of ordinary negligence.

HUNGARY

Limitation of Liability: *The following is added at the end of this section:*

The limitation and exclusion specified herein shall not apply to liability for a breach of contract damaging life, physical well-being, or health that has been caused intentionally, by gross negligence, or by a criminal act.

The parties accept the limitations of liability as valid provisions and state that the Section 314.(2) of the Hungarian Civil Code applies as the acquisition price as well as other advantages arising out of the present Statement of Limited Warranty balance this limitation of liability.

IRELAND

What this Warranty Covers: *The following is added to this section:*

Except as expressly provided in these terms and conditions, all statutory conditions, including all warranties implied, but without prejudice to the generality of the foregoing all warranties implied by the Sale of Goods Act 1893 or the Sale of Goods and Supply of Services Act 1980 are hereby excluded.

Limitation of Liability: *The following replaces the terms of this section in its entirety:*

For the purposes of this section, a “Default” means any act, statement, omission, or negligence on the part of IBM in connection with, or in relation to, the subject matter of this Statement of Limited Warranty in respect of which IBM is legally liable to you, whether in contract or tort. A number of Defaults which together result in, or contribute to, substantially the same loss or damage will be treated as one Default occurring on the date of occurrence of the last such Default.

Circumstances may arise where, because of a Default, you are entitled to recover damages from IBM.

This section sets out the extent of IBM’s liability and your sole remedy.

1. IBM will accept unlimited liability for death or personal injury caused by the negligence of IBM.
2. Subject always to the **Items for Which IBM is Not Liable** below, IBM will accept unlimited liability for physical damage to your tangible property resulting from the negligence of IBM.
3. Except as provided in items 1 and 2 above, IBM’s entire liability for actual damages for any one Default will not in any event exceed the greater of 1) EUR 125,000, or 2) 125% of the amount you paid for the Machine directly relating to the Default.

Items for Which IBM is Not Liable

Save with respect to any liability referred to in item 1 above, under no circumstances is IBM, its suppliers or resellers liable for any of the following, even if IBM or they were informed of the possibility of such losses:

1. loss of, or damage to, data;
2. special, indirect, or consequential loss; or
3. loss of profits, business, revenue, goodwill, or anticipated savings.

SLOVAKIA

Limitation of Liability: *The following is added to the end of the last paragraph:*

The limitations apply to the extent they are not prohibited under §§ 373-386 of the Slovak Commercial Code.

SOUTH AFRICA, NAMIBIA, BOTSWANA, LESOTHO AND SWAZILAND

Limitation of Liability: *The following is added to this section:*

IBM's entire liability to you for actual damages arising in all situations involving nonperformance by IBM in respect of the subject matter of this Statement of Warranty will be limited to the charge paid by you for the individual Machine that is the subject of your claim from IBM.

UNITED KINGDOM

Limitation of Liability: *The following replaces the terms of this section in its entirety:*

For the purposes of this section, a "Default" means any act, statement, omission, or negligence on the part of IBM in connection with, or in relation to, the subject matter of this Statement of Limited Warranty in respect of which IBM is legally liable to you, whether in contract or tort. A number of Defaults which together result in, or contribute to, substantially the same loss or damage will be treated as one Default.

Circumstances may arise where, because of a Default, you are entitled to recover damages from IBM.

This section sets out the extent of IBM's liability and your sole remedy.

1. IBM will accept unlimited liability for:
 - a. death or personal injury caused by the negligence of IBM; and
 - b. any breach of its obligations implied by Section 12 of the Sale of Goods Act 1979 or Section 2 of the Supply of Goods and Services Act 1982, or any statutory modification or re-enactment of either such Section.
2. IBM will accept unlimited liability, subject always to the **Items for Which IBM is Not Liable** below, for physical damage to your tangible property resulting from the negligence of IBM.
3. IBM's entire liability for actual damages for any one Default will not in any event, except as provided in items 1 and 2 above, exceed the greater of 1) Pounds Sterling 75,000, or 2) 125% of the total purchase price payable or the charges for the Machine directly relating to the Default.

These limits also apply to IBM's suppliers and resellers. They state the maximum for which IBM and such suppliers and resellers are collectively responsible.

Items for Which IBM is Not Liable

Save with respect to any liability referred to in item 1 above, under no circumstances is IBM or any of its suppliers or resellers liable for any of the following, even if IBM or they were informed of the possibility of such losses:

1. loss of, or damage to, data;
2. special, indirect, or consequential loss; or
3. loss of profits, business, revenue, goodwill, or anticipated savings.

Part 3 - Warranty Information

This Part 3 provides information regarding the warranty applicable to your Machine, including the warranty period and type of warranty service IBM provides.

Warranty Period

The warranty period may vary by country or region and is specified in the table below.

Note: "Region" means either Hong Kong or Macau Special Administrative Region of China.

Machine - Brocade Enterprise SAN Switch Module for IBM @server BladeCenter and Brocade Entry SAN Switch Module for IBM @server BladeCenter

Country or Region of Purchase	Warranty Period	Type of Warranty Service*
Worldwide	1 year	1
* See " <u>Types of Warranty Service</u> " for the legend and explanations of warranty-service types.		

A warranty period of 3 years on parts and 1 year on labor means that IBM provides warranty service without charge for:

1. parts and labor during the first year of the warranty period; and
2. parts only, on an exchange basis, in the second and third years of the warranty period. IBM will charge you for any labor provided in performance of the repair or replacement(s) in the second and third year of the warranty period.

Types of Warranty Service

If required, IBM provides repair or exchange service depending on the type of warranty service specified for your Machine in the above table and as described below. Warranty service may be provided by your reseller if approved by IBM to perform warranty service. Scheduling of service will depend upon the time of your call and is subject to parts availability. Service levels are response time objectives and are not guaranteed. The specified level of warranty service may not be available in all worldwide locations, additional charges may apply outside IBM's normal service area, contact your local IBM representative or your reseller for country and location specific information.

1. **Customer Replaceable Unit (“CRU”) Service**

IBM will ship CRU parts to you for your replacement. If IBM instructs you to return the replaced CRU, you are responsible for returning it to IBM in accordance with IBM's instructions. If you do not return the defective CRU, if IBM so instructs, within 30 days of your receipt of the replacement CRU, IBM may charge you for the replacement.

2. **On-site Service**

IBM or your reseller will either repair or exchange the failing Machine at your location and verify its operation. You must provide suitable working area to allow disassembly and reassembly of the IBM Machine. The area must be clean, well lit and suitable for the purpose. **For some Machines, certain repairs may require sending the Machine to an IBM service center.**

3. **Courier or Depot Service***

You will disconnect the failing Machine for collection arranged by IBM. IBM will provide you with a shipping container for you to return your Machine to a designated service center. A courier will pick up your Machine and deliver it to the designated service center. Following its repair or exchange, IBM will arrange the return delivery of the Machine to your location. You are responsible for its installation and verification.

4. **Customer Carry-In or Mail-In Service**

You will deliver or mail as IBM specifies (prepaid unless IBM specifies otherwise) the failing Machine suitably packaged to a location IBM designates. After IBM has repaired or exchanged the Machine, IBM will make it available for your collection or, for Mail-in Service, IBM will return it to you at IBM's expense, unless IBM specifies otherwise. You are responsible for the subsequent installation and verification of the Machine.

* This type of service is called ThinkPad® EasyServ or EasyServ in some countries.

The IBM Machine Warranty World Wide Web site at http://www.ibm.com/servers/support/machine_warranties/ provides a worldwide overview of IBM Limited Warranty for Machines, a Glossary of IBM definitions, Frequently Asked Questions (FAQs) and Support by Product

(Machine) with links to Product Support pages. **The IBM Statement of Limited Warranty is also available on this site in 29 languages.**

To obtain warranty service contact IBM or your IBM reseller. In Canada or the United States, call 1-800-IBM-SERV (426-7378). In the EU countries, see the telephone numbers below.

EU Country Telephone List

Phone numbers are subject to change without notice.

Austria -- 43-1-24592-5901	Italy -- 39-02-482-9202
Belgium -- 02-718-4339	Luxembourg -- 352-360385-1
Denmark -- 4520-8200	Netherlands -- 020-514-5770
Finland -- 358-9-4591	Portugal -- 351-21-7915-147
France -- 0238-557-450	Spain -- 34-91-662-4916
Germany -- 07032-15-4920	Sweden -- 46-8-477-4420
Greece -- 30-210-688-1220	United Kingdom -- 01475-555-055
Ireland -- 353-1-815-4000	

Appendix C. Notices

This information was developed for products and services offered in the U.S.A.

IBM may not offer the products, services, or features discussed in this document in other countries. Consult your local IBM representative for information on the products and services currently available in your area. Any reference to an IBM product, program, or service is not intended to state or imply that only that IBM product, program, or service may be used. Any functionally equivalent product, program, or service that does not infringe any IBM intellectual property right may be used instead. However, it is the user's responsibility to evaluate and verify the operation of any non-IBM product, program, or service.

IBM may have patents or pending patent applications covering subject matter described in this document. The furnishing of this document does not give you any license to these patents. You can send license inquiries, in writing, to:

*IBM Director of Licensing
IBM Corporation
North Castle Drive
Armonk, NY 10504-1785
U.S.A.*

INTERNATIONAL BUSINESS MACHINES CORPORATION PROVIDES THIS PUBLICATION "AS IS" WITHOUT WARRANTY OF ANY KIND, EITHER EXPRESS OR IMPLIED, INCLUDING, BUT NOT LIMITED TO, THE IMPLIED WARRANTIES OF NON-INFRINGEMENT, MERCHANTABILITY OR FITNESS FOR A PARTICULAR PURPOSE. Some states do not allow disclaimer of express or implied warranties in certain transactions, therefore, this statement may not apply to you.

This information could include technical inaccuracies or typographical errors. Changes are periodically made to the information herein; these changes will be incorporated in new editions of the publication. IBM may make improvements and/or changes in the product(s) and/or the program(s) described in this publication at any time without notice.

Any references in this information to non-IBM Web sites are provided for convenience only and do not in any manner serve as an endorsement of those Web sites. The materials at those Web sites are not part of the materials for this IBM product, and use of those Web sites is at your own risk.

IBM may use or distribute any of the information you supply in any way it believes appropriate without incurring any obligation to you.

Edition notice

© Copyright International Business Machines Corporation 2004. All rights reserved.

U.S. Government Users Restricted Rights — Use, duplication, or disclosure restricted by GSA ADP Schedule Contract with IBM Corp.

Trademarks

The following terms are trademarks of International Business Machines Corporation in the United States, other countries, or both:

Active Memory	Predictive Failure Analysis
Active PCI	PS/2
Active PCI-X	ServeRAID
Alert on LAN	ServerGuide
BladeCenter	ServerProven
C2T Interconnect	TechConnect
Chipkill	ThinkPad
EtherJet	Tivoli
e-business logo	Tivoli Enterprise
@server	Update Connector
FlashCopy	Wake on LAN
IBM	XA-32
IBM (logo)	XA-64
IntelliStation	X-Architecture
NetBAY	XceL4
Netfinity	XpandOnDemand
NetView	xSeries
OS/2 WARP	

Intel, MMX, and Pentium are trademarks of Intel Corporation in the United States, other countries, or both.

Microsoft, Windows, and Windows NT are trademarks of Microsoft Corporation in the United States, other countries, or both.

UNIX is a registered trademark of The Open Group in the United States and other countries.

Java and all Java-based trademarks and logos are trademarks or registered trademarks of Sun Microsystems, Inc. in the United States, other countries, or both.

Adaptec and HostRAID are trademarks of Adaptec, Inc., in the United States, other countries, or both.

Red Hat, the Red Hat “Shadow Man” logo, and all Red Hat-based trademarks and logos are trademarks or registered trademarks of Red Hat, Inc., in the United States and other countries.

Other company, product, or service names may be trademarks or service marks of others.

Important notes

Processor speeds indicate the internal clock speed of the microprocessor; other factors also affect application performance.

CD-ROM drive speeds list the variable read rate. Actual speeds vary and are often less than the maximum possible.

When referring to processor storage, real and virtual storage, or channel volume, KB stands for approximately 1000 bytes, MB stands for approximately 1 000 000 bytes, and GB stands for approximately 1 000 000 000 bytes.

When referring to hard disk drive capacity or communications volume, MB stands for 1 000 000 bytes, and GB stands for 1 000 000 000 bytes. Total user-accessible capacity may vary depending on operating environments.

Maximum internal hard disk drive capacities assume the replacement of any standard hard disk drives and population of all hard disk drive bays with the largest currently supported drives available from IBM.

Maximum memory may require replacement of the standard memory with an optional memory module.

IBM makes no representation or warranties regarding non-IBM products and services that are ServerProven[®], including but not limited to the implied warranties of merchantability and fitness for a particular purpose. These products are offered and warranted solely by third parties.

IBM makes no representations or warranties with respect to non-IBM products. Support (if any) for the non-IBM products is provided by the third party, not IBM.

Some software may differ from its retail version (if available), and may not include user manuals or all program functionality.

Product recycling and disposal

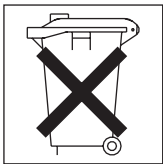
This unit contains materials such as circuit boards, cables, electromagnetic compatibility gaskets, and connectors which may contain lead and copper/beryllium alloys that require special handling and disposal at end of life. Before this unit is disposed of, these materials must be removed and recycled or discarded according to applicable regulations. IBM offers product-return programs in several countries. Information on product recycling offerings can be found on IBM's Internet site at <http://www.ibm.com/ibm/environment/products/prp.shtml>.

Battery return program

This product may contain a sealed lead acid, nickel cadmium, nickel metal hydride, lithium, or lithium ion battery. Consult your user manual or service manual for specific battery information. The battery must be recycled or disposed of properly. Recycling facilities may not be available in your area. For information on disposal of batteries outside the United States, go to <http://www.ibm.com/ibm/environment/products/batteryrecycle.shtml> or contact your local waste disposal facility.

In the United States, IBM has established a collection process for reuse, recycling, or proper disposal of used IBM sealed lead acid, nickel cadmium, nickel metal hydride, and battery packs from IBM equipment. For information on proper disposal of these batteries, contact IBM at 1-800-426-4333. Have the IBM part number listed on the battery available prior to your call.

In the Netherlands, the following applies.



Electronic emission notices

Federal Communications Commission (FCC) statement

Note: This equipment has been tested and found to comply with the limits for a Class A digital device, pursuant to Part 15 of the FCC Rules. These limits are designed to provide reasonable protection against harmful interference when the equipment is operated in a commercial environment. This equipment generates, uses, and can radiate radio frequency energy and, if not installed and used in accordance with the instruction manual, may cause harmful interference to radio communications. Operation of this equipment in a residential area is likely to cause harmful interference, in which case the user will be required to correct the interference at his own expense.

Properly shielded and grounded cables and connectors must be used in order to meet FCC emission limits. IBM is not responsible for any radio or television interference caused by using other than recommended cables and connectors or by unauthorized changes or modifications to this equipment. Unauthorized changes or modifications could void the user's authority to operate the equipment.

This device complies with Part 15 of the FCC Rules. Operation is subject to the following two conditions: (1) this device may not cause harmful interference, and (2) this device must accept any interference received, including interference that may cause undesired operation.

Industry Canada Class A emission compliance statement

This Class A digital apparatus complies with Canadian ICES-003.

Avis de conformité à la réglementation d'Industrie Canada

Cet appareil numérique de la classe A est conforme à la norme NMB-003 du Canada.

Australia and New Zealand Class A statement

Attention: This is a Class A product. In a domestic environment this product may cause radio interference in which case the user may be required to take adequate measures.

United Kingdom telecommunications safety requirement

Notice to Customers

This apparatus is approved under approval number NS/G/1234/J/100003 for indirect connection to public telecommunication systems in the United Kingdom.

European Union EMC Directive conformance statement

This product is in conformity with the protection requirements of EU Council Directive 89/336/EEC on the approximation of the laws of the Member States relating to electromagnetic compatibility. IBM cannot accept responsibility for any failure to satisfy the protection requirements resulting from a nonrecommended modification of the product, including the fitting of non-IBM option cards.

This product has been tested and found to comply with the limits for Class A Information Technology Equipment according to CISPR 22/European Standard EN 55022. The limits for Class A equipment were derived for commercial and industrial environments to provide reasonable protection against interference with licensed communication equipment.

Attention: This is a Class A product. In a domestic environment this product may cause radio interference in which case the user may be required to take adequate measures.

Taiwanese Class A warning statement

警告使用者：
這是甲類的資訊產品，在居住的環境中使用時，可能會造成射頻干擾，在這種情況下，使用者會被要求採取某些適當的對策。

Chinese Class A warning statement

声 明
此为 A 级产品。在生活环境中，该产品可能会造成无线电干扰。在这种情况下，可能需要用户对其干扰采取切实可行的措施。

Japanese Voluntary Control Council for Interference (VCCI) statement

この装置は、情報処理装置等電波障害自主規制協議会（VCCI）の基準に基づくクラスA情報技術装置です。この装置を家庭環境で使用すると電波妨害を引き起こすことがあります。この場合には使用者が適切な対策を講ずるよう要求されることがあります。

Index

A

- acoustic attenuation module option,
removing 18
- Active Session from Same Client
window 35
- adding optional features 57
- advanced features 45, 55
- Advanced Switch Management
window 39
- Advanced Web Tools 45
- Advanced Web Tools interface
window 52, 54
- attention notices 9

B

- bay locations 13
- BladeCenter management-module Web
interface, using 33
- BladeCenter unit 10, 13

C

- caution statements 9
- Class A electronic emission notice 87
- command-line interface window 42, 43,
44
- Command-prompt window 40, 43
- compatible options Web site 14
- components
 - information panel 27
 - major 11
- configuration menus 28
- configuring options 8
- connecting to the switch module
 - Telnet interface 34
 - Web interface 46

D

- danger statements 9
- determining the license identifier 56
- documentation, related 7

E

- electronic emission Class A notice 87
- Enter Network Password window 34,
47
- establishing a Telnet session
 - command-line window 43
 - management module 34
- establishing a Web-interface session
 - management module 46
 - Web browser 53
- external ports
 - characteristics 5
 - Fibre Channel 5
 - LC-LC fiber-optic cables 22

F

- fabric
 - aggregate bandwidth 5
 - latency 5
 - management methods 6
 - point-to-point 5
 - port speed 5
- FCC Class A notice 87
- features 3, 4
- Fibre Channel
 - ports 5, 28
 - protocols 5
 - service classes 5
 - switch fault 30, 31
- Fibre Channel switch module
 - components 11
 - features 3, 4
 - function 14
 - information panel 28
 - installation guidelines 14
 - installing 13, 16
 - LEDs 29
 - ports 28
 - removing or replacing 23
 - specifications 5
- Full SAN Scaling 56

H

handling static-sensitive devices 15

I

IBM Eserver BladeCenter Type 8677 13

important notices 9

indicators 29

information panel 27

installation

guidelines 14

illustration 21

options 14

procedure 17

requirements 14

switch module 21

installing

optional features 57

switch module 13, 17

internal ports 5

Internet protocol (IP) address 34, 45, 46

L

labels 2

LED

!(Fibre Channel switch fault) 30, 31

colors 29, 31

descriptions 31

front view 29

illustration 27, 30

locations 30

OK 30, 31

port diagnostics 30, 31

port fault 30, 31

port speed 30, 31

port status 30, 31

power-on 30, 31

states 29, 31

system status 27, 31

system-error 30, 31

license key 56

M

major components of switch module 11

management methods 6

management module

Active Session from Same Client
window 35

management module (*continued*)

Advanced Switch Management
window 39

Advanced Web Tools interface
window 52

command-line interface window 42

Command-prompt window 40

configuration settings 33, 45

Enter Network Password

window 34, 47

establishing a Telnet session 34, 39

establishing a Web-interface
session 46

Main window 36, 48

Password-change window 41

Switch Management window 37

switch-module 3 example 38

Web interface 33, 45

management workstation 33, 45

N

network password window 34, 47

notes 9

notes, important 85

notices

electronic emission 87

FCC, Class A 87

notices and statements 9

O

obtaining a license key 57

OK LED 30, 31

optional features 4, 55

options

configuring 8

installing 14

Web site 14

P

password-change window 41, 44

port diagnostics LED 30, 31

port speed LED 30, 31

port status LED 30, 31

power-on LED 30, 31

power-on self-test (POST) 22, 29

protocols 5

purchasing a license key 57

R

related documentation 7
removing switch module 23

S

serial number 2
small form-factor pluggable (SFP)
modules 7, 22, 25
software features 3, 4, 55
specifications 3, 5
standard software features 3
standards 5
statements and notices 9
static-sensitive devices, handling 15
Switch Management window 37
switch-module 3 example (Switch
Management window) 38
system reliability 15
system-error LED 30, 31
system-status LEDs 27, 31

T

Telnet
command-line interface window 44
command-prompt window 43
configuring the switch module 33
connecting to the Fibre Channel
switch module 34
interface 33
password-change window 44
Telnet session, establishing
through command-line window 43
through management module 34, 39
trademarks 84

U

United States electronic emission Class A
notice 87
United States FCC Class A notice 87
upgrading your switch module 55, 57

V

verifying license installation 57

W

Web browser
Advanced Web Tools interface
window 54
establishing a Web-interface
session 53
Web interface
configuring the switch module 45
connecting to the switch module 46
session, establishing through Web
browser 53
World Wide Web
BladeCenter documentation 9, 15
getting help and information 60
IBM Eserver and xSeries
products 60
IBM IntelliStation products 60
IBM Publications Ordering
System 60
IBM ServerProven list 14
IBM services 60
IBM Support 59
IBM Support Line products 60
product information 1
support telephone numbers 57, 60
worldwide name (WWN) 2, 11



Part Number: 25K8408

Printed in USA

(1P) P/N: 25K8408

