



BSQUARE Training

IBM NetVista 2200w Phase II

11/15/2000



Overview of Phase II

- ◆ **Internet Browser – IE 4.0 for WindowsCE**
- ◆ Windows Media Player
- ◆ Create/Modify xml directive files (.bud) using BSQUARE's Update Designer
- ◆ Improved Update Client UI
- ◆ Customer Problems fixed in SP2
- ◆ Remote Management – RDA



Internet Explorer 4.0 for WindowsCE

- ◆ Full HTTPS support
 - ◆ Secure 128-bit PCT/SSL communication with Web Server from Internet Explorer 4 Browser.
- ◆ Local 'Favorites', 'Home Page' and 'Search'
- ◆ Ability to disable IE Browser
- ◆ Can use Auto-Dial if Modem Connection is setup



Overview of Phase II

- ◆ Internet Browser – IE 4.0 for WindowsCE
- ◆ **Windows Media Player**
- ◆ Create/Modify xml directive files (.bud) using BSQUARE's Update Designer
- ◆ Improved Update Client UI
- ◆ Customer Problems fixed in SP2
- ◆ Remote Management – RDA



Windows Media Player

- ◆ Launched by Internet Explorer
- ◆ Supported Formats
 - ◆ *.asf and *.asx (Windows Media Container Files)
 - ◆ *.avi
 - ◆ *.mpe and *.mpg
 - ◆ *.mp3, *.mid (MIDI), *.wav, *.aif (AIFF)



Overview of Phase II

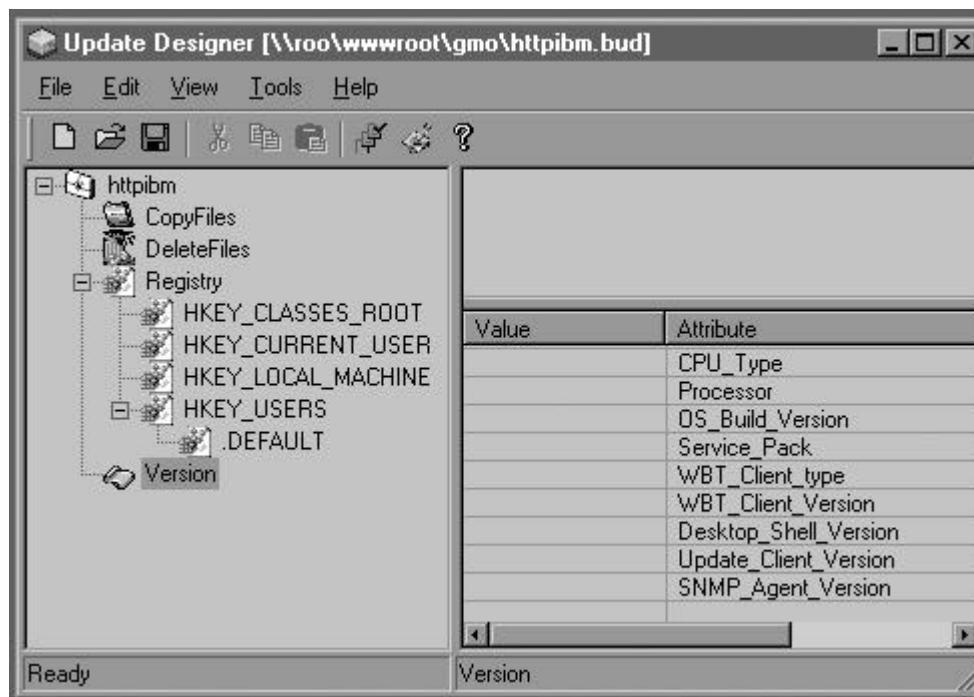
- ◆ Internet Browser – IE 4.0 for WindowsCE
- ◆ Windows Media Player
- ◆ **Create/Modify xml directive files (.bud) using BSQUARE's Update Designer**
- ◆ Improved Update Client UI
- ◆ Customer Problems fixed in SP2
- ◆ Remote Management – RDA



Update Designer Overview

- ◆ BSQUARE's Update Designer is an intuitive, graphical tool for easily creating device update packages (.bud files) using a drag and drop interface.
- ◆ Update Designer is included with Remote Device Administrator.
- ◆ Update Designer is a Win32 application
 - ◆ Can be run on any WinNT 4.0 or Win2000 PC.

Update Designer User Interface

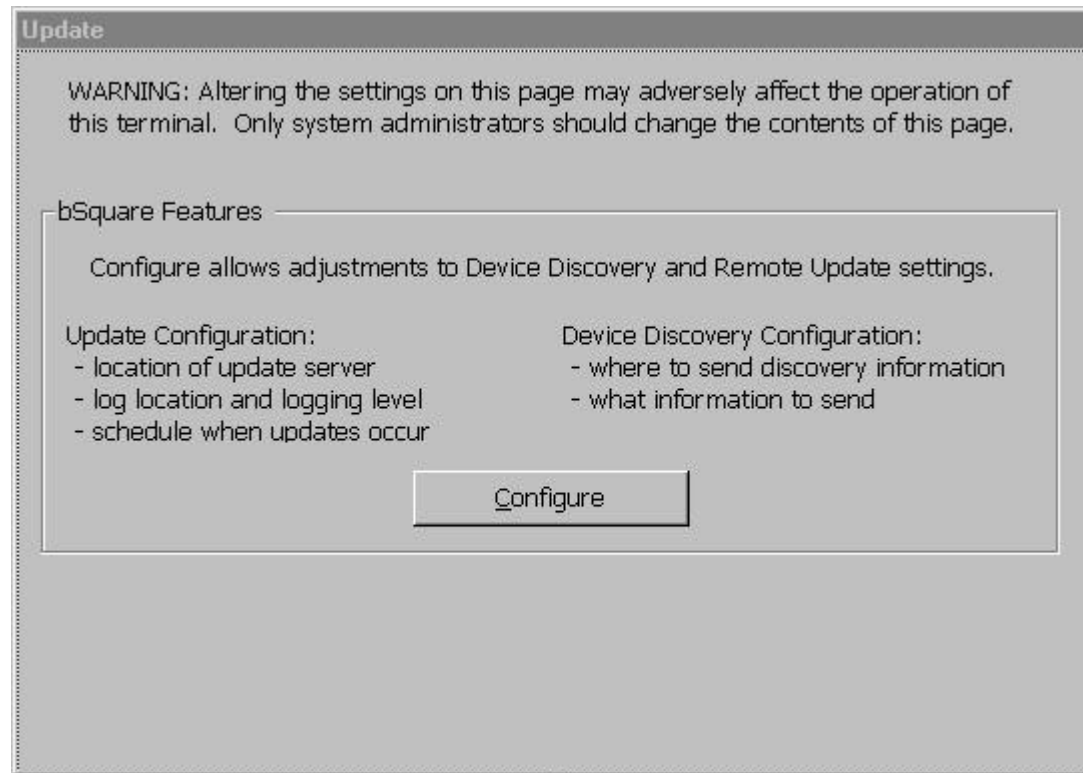




Overview of Phase II

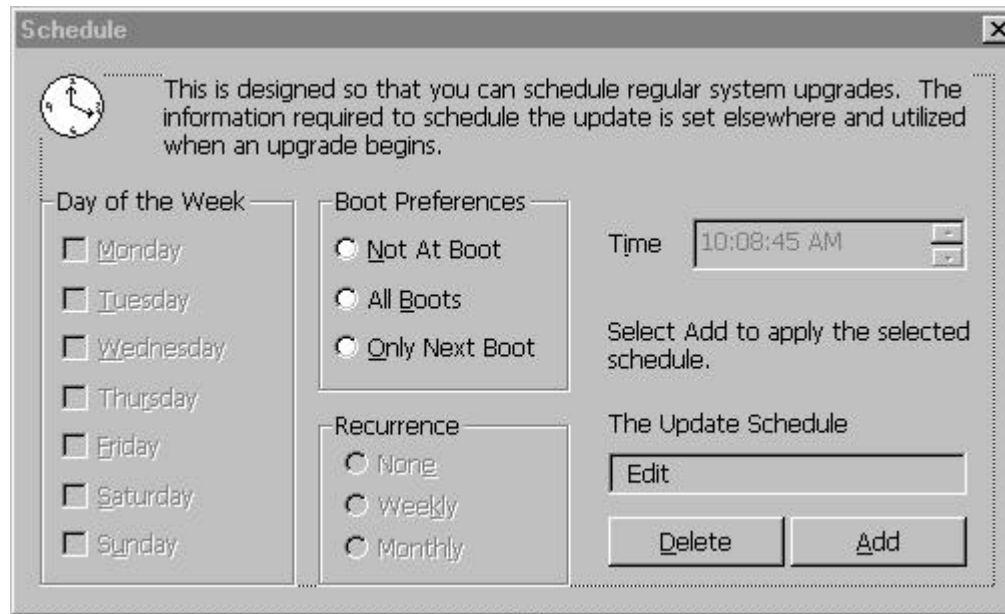
- ◆ Internet Browser – IE 4.0 for WindowsCE
- ◆ Windows Media Player
- ◆ Create/Modify xml directive files (.bud) using BSQUARE's Update Designer
- ◆ **Improved Update Client UI**
- ◆ Customer Problems fixed in SP2
- ◆ Remote Management – RDA

Changes to 'Terminal Properties'



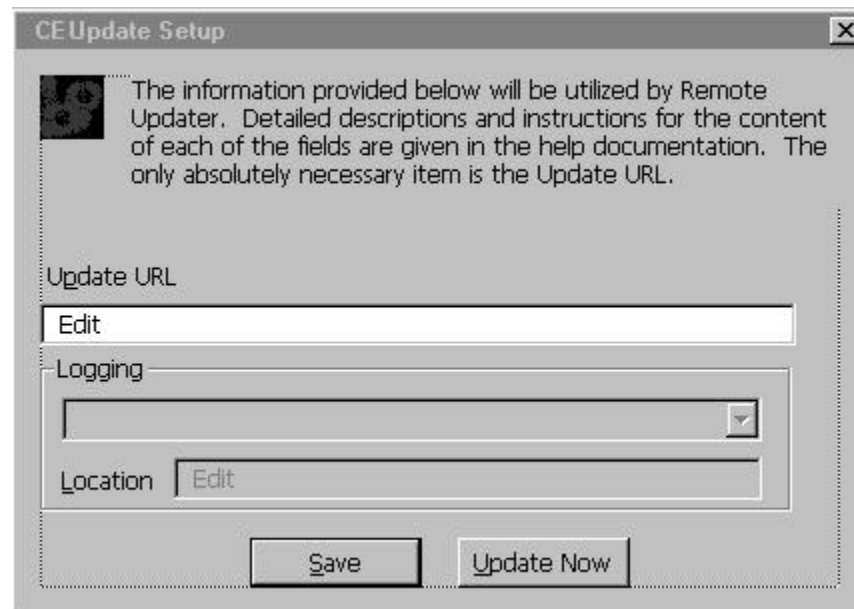
When you press F2, you are presented with the Terminal Properties UI. One of the tabs is the Update tab shown above.

Schedule Updates



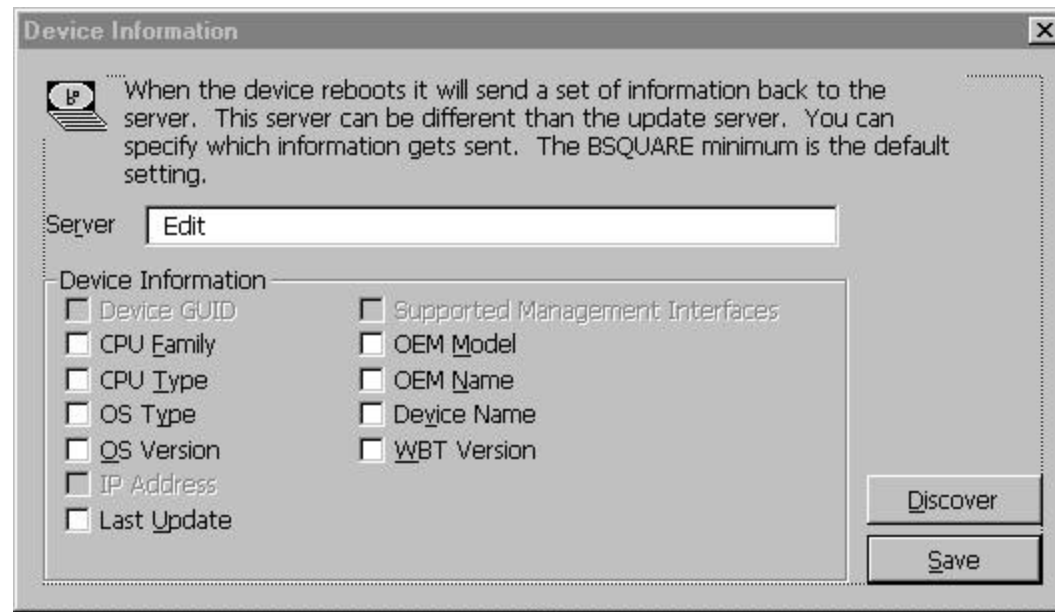
Pressing 'Configure' brings up a new set of Setup tabs for the Updater. This first page allows you to set Boot Preferences.

Configure Update Properties



The next page allows you to enter the Update URL from which the Updater will run the Update Directive (.bud) file.

Device Information Page



The third and final page allows the Administrator to enter the RDA server Discovery URL and chose which pieces of client information are to be initially sent to the server.



Overview of Phase II

- ◆ Internet Browser – IE 4.0 for WindowsCE
- ◆ Windows Media Player
- ◆ Create/Modify xml directive files (.bud) using BSQUARE's Update Designer
- ◆ Improved Update Client UI
- ◆ **Customer Problems fixed in SP2**
- ◆ Remote Management – RDA

Customer Problems fixed in SP2

Problem	Solution
DHCP client does not renew its lease	Added code to support a software maintained “real-time clock”
Keyboard mapping of Numpad Enter Key	New Futuresoft Emulators included improved mapping functionality.
Mapping CTRL keys independently	New Futuresoft Emulators included improved mapping functionality.
Newest Belkin USB→Serial Converters not supported	Modified driver to support Belkin F5U103 rev 2.05



Overview of Phase II

- ◆ Internet Browser – IE 4.0 for WindowsCE
- ◆ Windows Media Player
- ◆ Create/Modify xml directive files (.bud) using BSQUARE's Update Designer
- ◆ Improved Update Client UI
- ◆ Customer Problems fixed in SP2
- ◆ **Remote Management – RDA**



Remote Device Administrator

- ◆ Remotely manage your Thin Clients
- ◆ Devices appear maintenance free to the end user
- ◆ Standards based open architecture solution
- ◆ Group devices logically, manage by group
- ◆ Scales to manage virtually unlimited number of devices



RDA – Build Manageability into your Windows Based Terminals

Thin clients have simple task-focused user interfaces. With these devices it is usually a market requirement that the user not be directly involved in maintaining the device. In addition, these devices do not typically expose local file systems. BSQUARE's Remote Device Administrator was designed to allow Corporate IT departments to manage Windows Based Terminals in the field.



RDA – Reduce the total Cost of ownership

- ◆ **"Pull"** Technology integrated into the device allows the device to automatically pull down updates from a remote server.
- ◆ **"Push"** Technology allows an administrator to track and monitor enterprise-wide deployments of WBTs, set remote device configuration settings, and initiate or schedule updates to the remote device.



RDA – A comprehensive solution

- ◆ Add/replace/delete registry entries.
- ◆ Initiate reboots.
- ◆ Perform multi-pass updates.
- ◆ Support priorities which control sequence of specific update actions.
- ◆ Track and monitor enterprise-wide deployments of WBTs.
- ◆ Initiate or schedule updates to the remote device.



RDA – A comprehensive solution

- ◆ View and record OS Version, and GUID.
- ◆ Set remote device configuration settings such as:
 - ◆ Network – eg. Static IP, DHCP enabled
 - ◆ Keyboard settings
 - ◆ Display settings
 - ◆ Update parameters, eg. when to update, where to find update files
 - ◆ IE and RDP connection settings



RDA – Remote Administration Terminals

- ◆ Administrators can access the RDA server from any computer that has:
 - ◆ A network connection
 - ◆ Authorization to access the server (depends on corporate network and server configuration)
 - ◆ Microsoft's Internet Explorer IE4.0 or better



RDA Server Features

Simple, intuitive User Interface allows the administrator to:

- ◆ Filter settings of interest. View only those system parameters of interest.
- ◆ Easily group devices by any combination of parameters. Manage devices by group. The update configurations, system parameters and local content can be assigned based on model, location, or any grouping that you choose. Separate update file servers can be assigned to each group.



RDA – Web-based, open architecture design using industry standards

Remote Device Administrator is designed using industry standards such as XML, WMI, SNMP and employs an open architecture. Its web-enabled design allows administrators to access the RDA server from any workstation or device with an IE browser and suitable network access permission.



Questions?

