

# X60 models Setup Poster

P/N 42T7884

8/16/2006

Size : 11x14 inches

Color : 2 color job =  Process Black (This plate must be printed in PMS Process Black C)

Process Magenta (This plate must be printed in PMS 032cvc)

Font : IBM Fonts and Helvetica Neue Family

Material : 100 gsm gloss art paper (Use 100% recycled paper in only Japan. )

Blue line shows die-cut. DO NOT PRINT.

Please change the barcode No.

Please change the country name if the poster is printed in other than China.

## ThinkPad®



### Unpack

- ThinkPad(R) computer
- Battery pack
- Power cord
- AC adapter



- 2 TrackPoint(R) caps
- Manuals
  - Setup Instructions (this sheet)
  - Service and Troubleshooting Guide
  - Safety and Warranty Guide
  - Other supplements or flyers



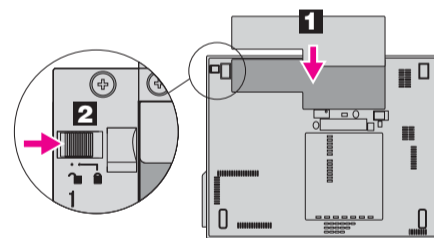
See reverse for notes about unlisted, missing, or damaged items and recovery CD.

### Initial Setup Instructions

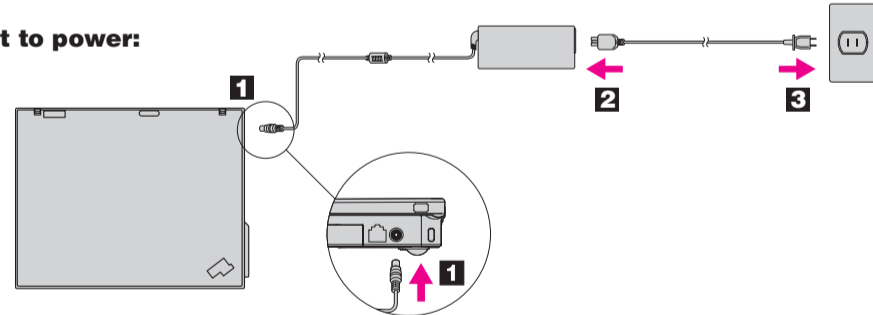


Read the safety notices and important tips in the included manuals before using your computer.

- 1 Install battery pack:**  
Your battery is ready to use.



- 2 Connect to power:**



- 3 Turn on the power:** **6**

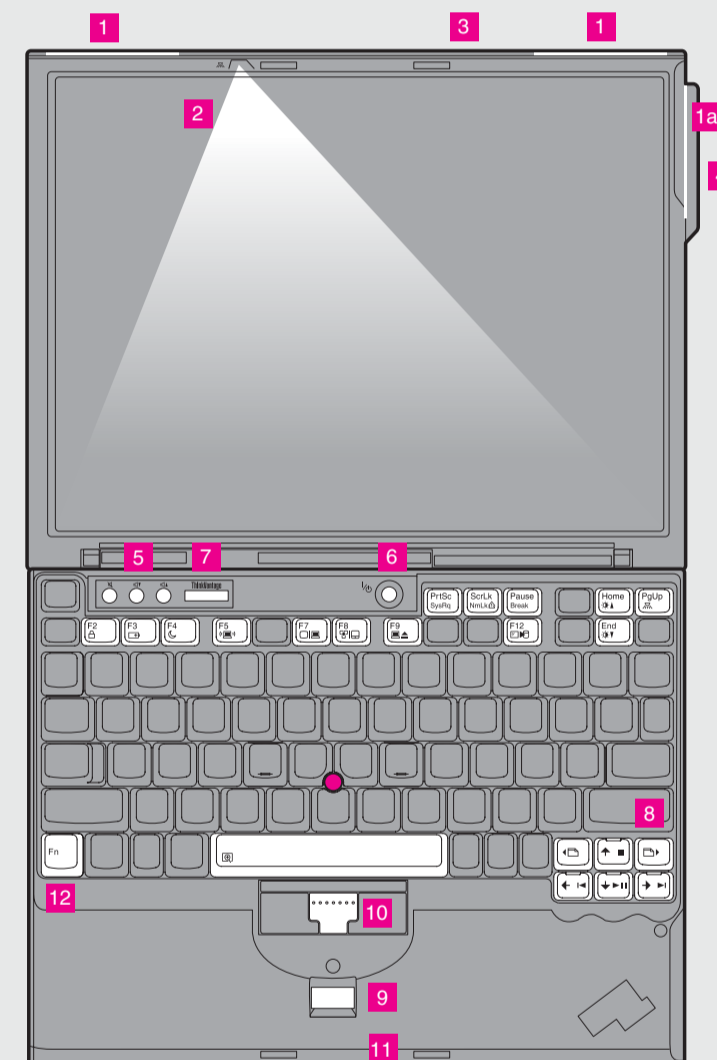
- 4 Point and click with TrackPoint(R) Navigation System:**  
Press the TrackPoint cap in the direction you want to move the pointer. The left and right buttons below the space bar function like mouse buttons.

- 5 Configure the Operating System following on-screen instructions:**  
This process takes several minutes, and your computer may restart multiple times.

- 6 For more detailed information, press the ThinkVantage(R) button:** **7**

## ThinkVantage® Design

- 1 UltraConnect(TM) wireless LAN antennas (main and auxiliary)**
- 1a UltraConnect wireless LAN antenna (third)\***  
\*Specific models only.
- 2 ThinkLight(R) keyboard light**
- 3 One - handed latch**
- 4 Wireless WAN antenna\***  
\*Specific models only.
- 5 Volume and mute buttons**
- 6 Power button**
- 7 ThinkVantage button**  
ThinkVantage
- 8 Web browser back and forward**
- 9 Fingerprint reader\***  
\*Specific models only.
- 10 TrackPoint center button**
- 11 Wireless radio switch**
- 12 Fn key**  
Use in combination with other keys to access special ThinkPad features



	Lock your computer		Enter hibernation
	Manage battery & power		ThinkLight on/off
	Enter standby		Multimedia controls
	Manage wireless connections		Change display brightness
	Change display settings		
	Change input device settings		Magnify screen contents
	Manage external devices		

# X60 models Setup Poster

P/N 42T7884

8/16/2006

Size : 11x14 inches

Color : 2 color job =  Process Black (This plate must be printed in PMS Process Black C)

 Process Magenta (This plate must be printed in PMS 032cvc)

Font : IBM Fonts and Helvetica Neue Family

Material : 100 gsm gloss art paper (Use 100% recycled paper in only Japan. )

Blue line shows die-cut. DO NOT PRINT.

Please change the barcode No.

Please change the country name if the poster is printed in other than China.

## ThinkVantage Technologies

Pressing the ThinkVantage button on your keyboard opens the ThinkVantage Productivity Center. To learn more about ThinkVantage technologies and other items, select a topic in "Help and Support" from the Productivity Center, and type a word in the keyword search field.



### Productivity Center

Productivity Center guides you to a host of information and tools to help you set up, understand, maintain, and enhance your ThinkPad computer.



### Access Connections

Access Connections allows you to seamlessly switch between wired and wireless environments while automatically managing security settings, printers, home page and other location-specific settings.



### Client Security Solution

This unique hardware-software combination helps protect your data, including vital security information like passwords, encryption keys and electronic credentials, while helping to guard against unauthorized access to data.



### Rescue and Recovery

Rescue and Recovery includes a set of recovery tools to help you diagnose, get help and recover from system crashes quickly, even if the primary operating system will not boot and you are unable to contact your support team.



### System Migration Assistant

System Migration Assistant helps get you up and running by quickly and accurately migrating your data and settings to your new computer.



### System Update

System Update downloads new Lenovo software, drivers and BIOS available for your ThinkPad computer.

To learn more, press the ThinkVantage button:



## Using the included manuals and Help Center (online manual)

To find detailed information about your ThinkPad computer, see the Safety and Warranty Guide, the Service and Troubleshooting Guide or open the Help Center.



### Safety and Warranty Guide

#### Safety and Warranty Guide

- Important safety information
- Warranty information



### Service and Troubleshooting Guide

#### Service and Troubleshooting Guide

- Introduction to other sources of information
- Important tips for taking care of your computer
- Diagnostics and troubleshooting
- Recovery options
- Help and Service
- Warranty information for your computer



### Help Center

To open the Help Center, press the ThinkVantage button and select a topic in "Help and support" from the Productivity Center.



#### Learn about my computer

- Use system features
- Configure
- Protect & recover
- Download & update
- Stay current



#### Get help and support

- View references
- Find support information
- Diagnose a problem
- Download & update
- Ask an expert



#### Browse other offerings

- Learn how to achieve all day computing
- Innovative ThinkVantage solutions
- Options for your computer
- A community of ThinkPad users
- New looks for your desktop
- Services for your computer

\* Additional unpacking notes:

- 1) Some models may contain items that are not listed.
- 2) If any item is missing or damaged, please contact your place of purchase.
- 3) Everything for recovering factory-installed files and applications is on your hard disk eliminating the need for a recovery CD. For more information, see "Recovery options" in the Service and Troubleshooting Guide.

(C) Copyright Lenovo 2006  
All rights reserved.

ThinkPad is a registered trademark of Lenovo.

Printed in China

For Barcode Position Only