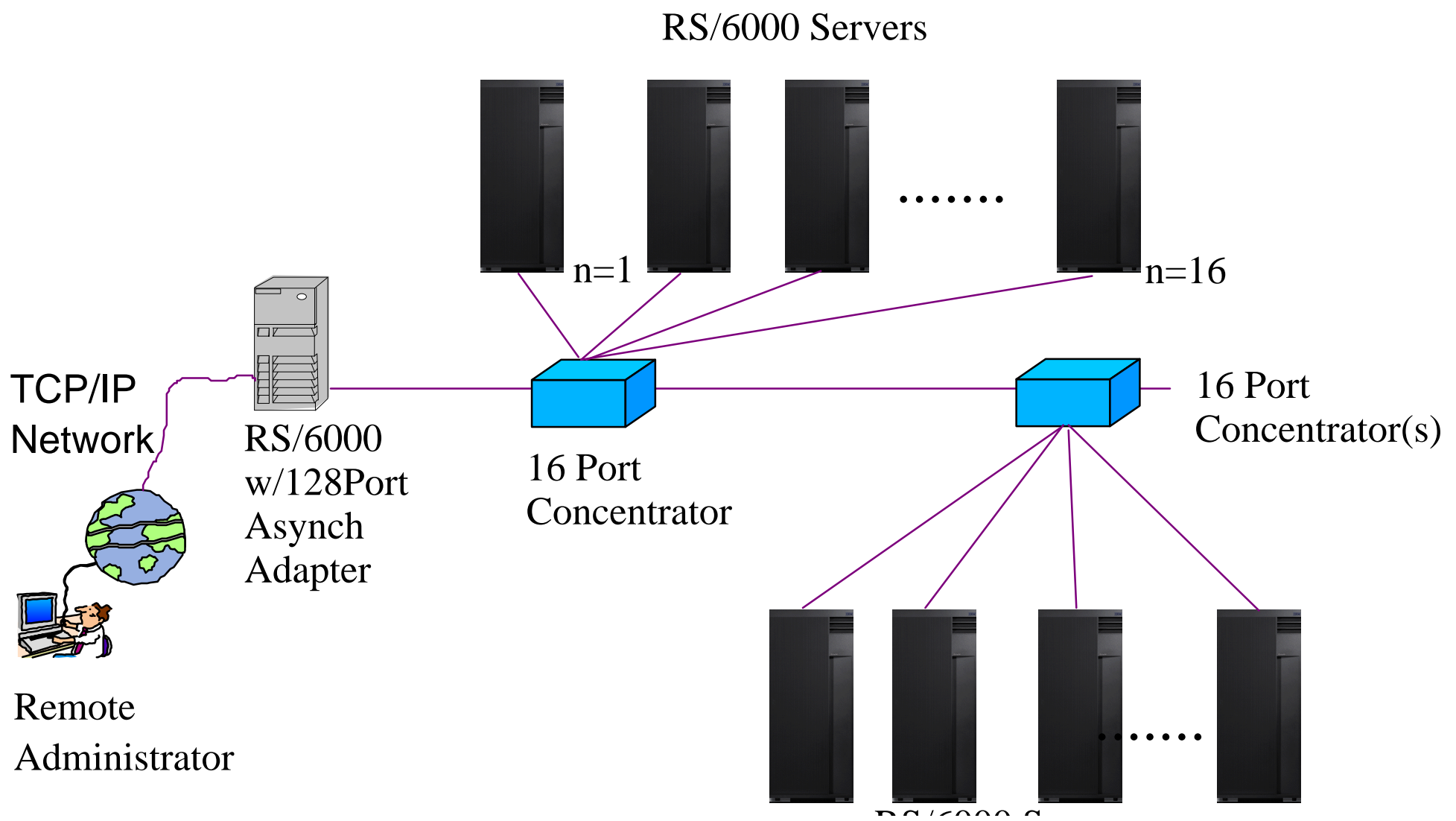


# Centralizing RS/6000 Consoles



- Centralized Administration of Server Farm
  - Remote PC or Workstation
- Console Functions
  - Power On/Off
  - Boot Messages
  - Console Redirection
- Generic RS/6000 Hardware, AIX

# Centralizing RS/6000 Consoles



# Central Server Setup



## ● Hardware

- 128 Port Asynch Adapter (FC2844, \$1295)
- 16 Port Concentrator(s) (FC8137, \$1595)

## ● Software

- Install Prereq AIX Fileset: `bos.net.uucp`

## ● Configuration

- Define Asynch Connections
  - ▶ 9600 bps, 8/1/N, Disabled (smit mktty)
- Define All tty's in `"/usr/lib/uucp/Devices"`
  - ▶ `"Direct tty $nn$  - 9600 direct"` (Where  $nn$  = tty port number)

## ● Connect to Remote Console

- `cu -ml /dev/tty $nn$`

# Server Farm Setup



## ● Hardware Setup

- Connect Serial Port S1 (sa0) to 16 Port Concentrator
- RS-232 Cable + Null Modem

## ● Software

- Base AIX

## ● Configuration

- Set up "Service Processor" (See URL in "References" section of this presentation)
  - ▶ Direct ASCII Terminal Connection
- Create tty on Serial Port
  - ▶ 9600, 8/1/N, Enabled (smit mktty)
- Redirect Console to Serial Port (smit chcons)

# References



- Service Processor

- [http://www.rs6000.ibm.com/resource/hardware\\_docs/english/a4a68mst.htm](http://www.rs6000.ibm.com/resource/hardware_docs/english/a4a68mst.htm)

- Asynch Adapters, Cabling

- [http://www.rs6000.ibm.com/resource/hardware\\_docs/sa38-0516/a4ad6mst.html](http://www.rs6000.ibm.com/resource/hardware_docs/sa38-0516/a4ad6mst.html)

- UUCP Configuration, Usage

- [http://www.rs6000.ibm.com/doc\\_link/en\\_US/a\\_doc\\_lib/cmds/aixcmds1/cu.htm](http://www.rs6000.ibm.com/doc_link/en_US/a_doc_lib/cmds/aixcmds1/cu.htm)