

**IBM Personal System/2  
Image-I Adapter/A  
Installation Instructions**



# IBM Personal System/2 Image-I Adapter/A Installation Instructions



## Note

Before using this information and the product it supports, be sure to read the general information under "Notices" on page 13.

### First Edition (May 1993)

**The following paragraph does not apply to the United Kingdom or any country where such provisions are inconsistent with local law:** INTERNATIONAL BUSINESS MACHINES CORPORATION PROVIDES THIS PUBLICATION "AS IS" WITHOUT WARRANTY OF ANY KIND, EITHER EXPRESS OR IMPLIED, INCLUDING, BUT NOT LIMITED TO, THE IMPLIED WARRANTIES OF MERCHANTABILITY OR FITNESS FOR A PARTICULAR PURPOSE. Some states do not allow disclaimer of express or implied warranties in certain transactions, therefore, this statement may not apply to you.

This publication could include technical inaccuracies or typographical errors. Changes are periodically made to the information herein; these changes will be incorporated in new editions of the publication. IBM may make improvements and/or changes in the product(s) and/or the program(s) described in this publication at any time.

It is possible that this publication may contain reference to, or information about, IBM products (machines and programs), programming, or services that are not announced in your country. Such references or information must not be construed to mean that IBM intends to announce such IBM products, programming, or services in your country.

Requests for technical information about IBM products should be made to your IBM Authorized Dealer or your IBM Marketing Representative.

© Copyright International Business Machines Corporation 1993. All rights reserved.

Note to U.S. Government Users — Documentation related to restricted rights — Use, duplication or disclosure is subject to restrictions set forth in GSA ADP Schedule Contract with IBM Corp.

---

# Contents

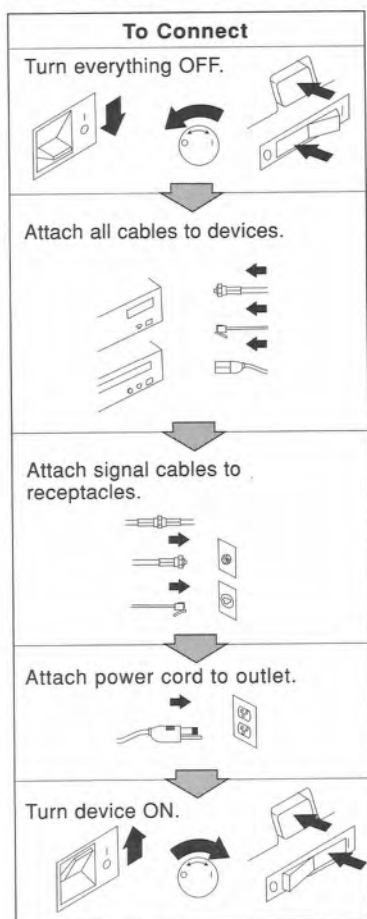
<b>Electrical Safety</b> . . . . .	iv
<b>About This Book</b> . . . . .	v
<b>Product Description</b> . . . . .	1
<b>Before You Begin</b> . . . . .	2
<b>Installing the Image-I Adapter/A</b> . . . . .	3
<b>Copying the Option Diskette</b> . . . . .	5
<b>Configuring the Computer</b> . . . . .	6
<b>Testing the Computer and the Installed Adapter</b> . . . . .	8
<b>Product Warranties and Notices</b> . . . . .	10
Notices . . . . .	13
Trademarks and Service Marks . . . . .	13
Electronic Emission Notices . . . . .	14

# Electrical Safety

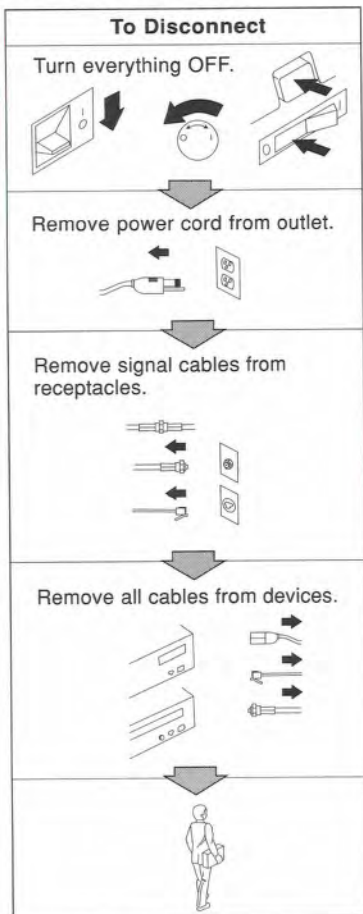


**DANGER:**

Electrical current from power, telephone, and communication cables is hazardous. To avoid shock hazard, connect and disconnect cables as shown below when installing, moving, or opening the covers of this product or attached devices. The power cord (also known as a power cable) must be used with a properly-grounded outlet.



Note: In the U.K., by law, the telephone cable must be connected after the power cord.



Note: In the U.K., by law, the power cord must be disconnected after the telephone line cable.

---

## About This Book

These instructions describe the installation of the IBM Personal System/2 Image-I Adapter/A.

This book is intended for the person who will install this adapter in an IBM Personal System/2 computer. In addition to this book, you will need to refer to the original documentation that came with your computer.





---

## Product Description

In addition to these instructions, this option package contains the following items:

- IBM<sup>\*</sup> Personal System/2<sup>\*</sup> Image-I Adapter/A
- *IBM Personal System/2 Image Adapter/A Option Diskette*
- Multilingual safety instructions
- Device drivers

If any item is missing or damaged, inform your supplier.

**Note:** The device driver diskette package, part number S61G-1409-00, is also available. Contact your place of purchase or your IBM sales representative for more information.

The Image-I Adapter/A is a full size high-resolution display adapter capable of running displays at resolutions up to 1600 x 1280 pels. It provides additional function and front-of-screen performance over the existing Image Adapter/A family of display adapters and is shipped with 3MB of memory.

The Image-I Adapter/A offers a higher screen refresh rate and the non-interlaced scanning capability enhances ergonomic benefits by providing flicker free performance even at high resolutions (1600 x 1280). The Image-I Adapter/A may be attached to the International Organization for Standardization (ISO)-enabled IBM 6091-016, 6091-19i, 1091-051 displays, 4517, and the IBM 9504 Monochrome Display. These displays conform with industry and government standards, such as ISO standard 9241/3.

You can install the Image-I Adapter/A in any IBM PS/2<sup>\*</sup> Micro Channel<sup>\*</sup> architecture computer, except the Model 8573. ISO capability may only be achieved when installed in ISO-capable systems.

---

\* Trademark of the IBM Corporation.

---

## Before You Begin

Before you install the Image-I Adapter/A, ensure that you have an IBM PS/2 Monochrome or Color Analog Display installed.

If you are using one of the following displays you will need to use a special cable:

Display Type	Cable Part Number	Description
6091-016 6091-19i	49G2717	IBM SIM cable (SIM connector to 5BNC)
9517 1091-051 FC9020	49G2718	IBM Connector Converter Cable (FC 5504)
1091-051 FC9021	-	No special cable needed

**Note:** Use of any non-IBM attachment cable might invalidate the Federal Communications Commission (FCC) certification.

---

## Installing the Image-I Adapter/A

**Warning:** Do not open the static-protective bag containing the adapter until instructed to do so. Static electricity can damage the adapter.

To install the Image-I Adapter/A:

1. Turn off the computer and all attached devices.
2. Unplug all power cables from electrical outlets.

**CAUTION:**

**See the Safety Instructions supplied with the Image-I Adapter/A for the correct sequence of cable removal.**

3. Make a note of the location of all the cables connected to the back of the computer; then, disconnect them.
4. Remove the computer cover. If necessary, refer to the documentation that came with your computer for information on cover removal.
5. The list on the following page identifies the slot in the various computer models that incorporates the Auxiliary Video Extension Connector, (AVEC).

**Note:** The display attached to the Image-I Adapter/A can show VGA graphics only if the adapter has been installed in the AVEC slot.

Ideally, the Image-I Adapter/A should be installed in the AVEC slot unless this slot is already in use (for example with an IBM 8514/A Adapter).

<b>Computer Model Number</b>	<b>AVEC Slot Number (Identified on back panel below the slot)</b>
Model 50	3
Model 55	1
Model 56	2
Model 57	2
Model 60	6
Model 65	6
Model 70	1
Model 76	3
Model 77	2
Model 80	6
Model 85	7
Model 90	3
Model 95	7

6. Install the Image-I Adapter/A. If necessary, refer to the documentation that came with your computer for adapter installation information.

**CAUTION:**

**Do not plug the computer power cable into the main power supply until the computer cover has been reinstalled.**

7. Reinstall the computer cover and lock it (if applicable). If necessary, refer to the documentation that came with your computer for more information on replacing the cover.
8. Connect the display cable to the Image-I Adapter/A. Refer to "Before You Begin" on page 2 for special cable requirements for the IBM 6091, 1091-051, and 9517 displays.
9. Reconnect all the cables that you removed in step 3 on page 3. See the Safety Instructions supplied with the Image-I Adapter/A for the correct sequence of cable installation.
10. Continue with the next section "Copying the Option Diskette."

---

## Copying the Option Diskette

1. If your system programs are located on the hard disk, turn on all attached devices and then turn on the computer.

If your system programs are not located on the hard disk, insert your backup copy of the Reference Diskette into drive A. Turn on all the attached devices; then, turn on the computer.

2. If you see the 165 error code icon, as shown below, press **F1** to continue.



3. When the IBM logo appears, press **Enter**.
4. When you are prompted to run the Automatic Configuration program, type **N** and the Main Menu of the system programs is displayed.
5. Select **Copy an option diskette** from the Main Menu.
6. Follow the instructions on the screen until the Option Diskette data is successfully copied.
7. Return to the Main Menu.
8. Turn off the computer and all attached devices.
9. Continue to the next section "Configuring the Computer."



---

## Configuring the Computer

1. If your system programs are located on the hard disk, turn on all attached devices; then, turn on the computer.

If your system programs are not located on the hard disk, insert your backup copy of the Reference Diskette into drive A. Turn on all the attached devices; then, turn on the computer.

2. If you see the 165 error code icon, as shown below, press **F1** to continue.



3. When the IBM logo appears, press **Enter**.
4. When you are prompted to run the Automatic Configuration program, type **Y**.
5. If you installed the Image-I Adapter/A in the AVEC slot, ensure that the Adapter Memory Location is set to segment value C000. Continue to step 6.  
  
If you installed the Image-I Adapter/A in any other slot, go to step 12 on page 7.
6. When the Automatic Configuration program is complete, access the system programs. Refer to the documentation that came with your computer for more information about the system programs.
7. When the IBM logo appears, press **Enter**.
8. Select **Set Configuration** from the Main Menu.
9. Select **View Configuration** from the Set Configuration Menu.
10. Use the page up and page down keys and the arrow keys to locate the entry for the Image-I Adapter/A installed in the AVEC slot.
11. If the segment value **Adapter Memory Location** is C000, your system is configured correctly. Return to the Main Menu of the system programs. You may continue to the next section, "Testing the Computer and the Installed Adapter" on page 8.

- If the segment value is *not* C000, do the following:
- a. Return to the **Set Configuration Menu**.
  - b. Select **Change Configuration**.
  - c. Use the page up and page down keys and the arrow keys to locate the entry for the Image-I Adapter/A installed in the AVEC slot.
  - d. Position the cursor on the **Adapter Memory Location** field.
  - e. Use the F5 and F6 keys to change the segment value until it reads C000.
  - f. If an asterisk appears next to the segment value when you set it to C000, it means there is a memory location conflict with another adapter installed in your computer. Correct this error by changing the entry for the conflicting adapter before you save the new information.
  - g. Press **F10** to save the new configuration.
  - h. When saving the configuration is complete, press **Enter** twice to return to the **Change Configuration** screen.
  - i. Return to the **Set Configuration Menu**.
  - j. Exit the **Set Configuration Menu** and follow the instructions on the screen to restart the system and activate the changes. Continue to step 13.
12. When the Automatic Configuration program is complete, press **Enter** to restart the computer. Continue to the next step.
  13. You may make a backup copy of the system configuration information at this time. Refer to the documentation that came with your computer for more information.
  14. You may continue to the next section "Testing the Computer and the Installed Adapter" on page 8.

---

## Testing the Computer and the Installed Adapter

1. Go to the Main Menu of the system programs. If necessary, refer to the documentation that came with your computer for additional information.
2. Select **Test the computer** from the Main Menu to start the test procedure.

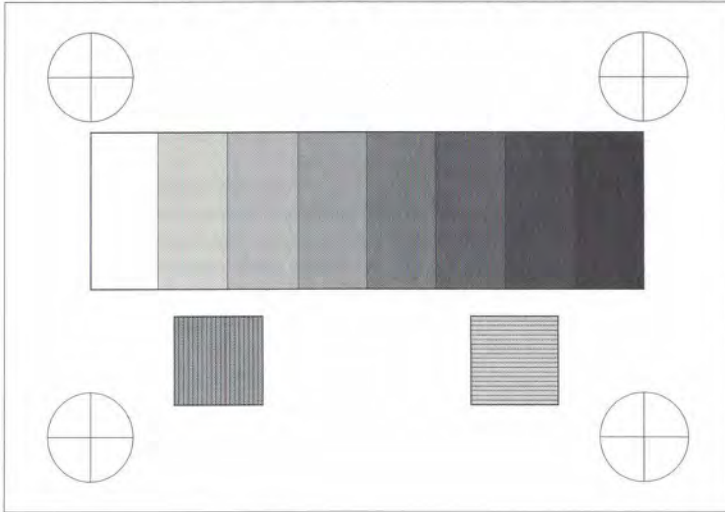
**Note:** This procedure tests all the installed adapters and might take several minutes to complete.

3. A list of installed devices is displayed on the screen. If the list is correct, press **Y** and continue with the next step. If the **Image-I Adapter/A** is not on the list, press **N**, and ensure that the Image-I Adapter/A is installed correctly. If it is installed correctly, but does not appear on the list, return it to your supplier with the proof of purchase and request a replacement.
4. As the test procedure runs, answer the questions that appear on the screen until the Image-I Adapter/A message panel appears. Answer the questions related to the Image-I Adapter/A.
5. Press any key to continue and follow the instructions on the screen until the tests are successfully completed.

To test individual adapter components, run the Advanced Diagnostics program utility. To run Advanced Diagnostics, Press **Ctrl+A** at the system programs Main Menu. Follow the instructions on the screen and answer the questions related to the Image-I Adapter/A until a test pattern is displayed.



Compare the displayed test pattern with the following example:



If you are using a color display, this pattern is displayed in color. Check that the color blocks from left to right are white, red, yellow, green, cyan, blue, purple, and black. The outline of the pattern should be white.

**Note:** If a 6091 or 1091-051 Color Display is attached to the Image-I Adapter/A, you will see some additional test panels. To check these panels, refer to the *Setup and Operation for the 6091 Color Display* manual.

You have now completed the installation of the Image-I Adapter/A.

If you need to install an Image-I Adapter/A Device Driver, you may do so now. Refer to the *IBM Personal System/2 Image-I Adapter/A Device Driver Installation Instructions* that are included with the device drivers.

---

# Product Warranties and Notices

International Business Machines Corporation

Armonk, New York, 10504

## Statement of Limited Warranty

*The warranties provided by IBM in this Statement of Limited Warranty apply only to Machines you originally purchase for your use, and not for resale, from IBM or an IBM authorized reseller. The term "Machine" means an IBM machine, its features, conversions, upgrades, elements, or accessories, or any combination of them. Machines are subject to these terms only if purchased in the United States or Puerto Rico, or Canada, and located in the country of purchase. If you have any questions, contact IBM or your reseller.*

**Machine:** IBM PERSONAL SYSTEM/2 IMAGE-1 ADAPTER/A

**Warranty Period\*:** One Year

*\*Elements and accessories are warranted for three months. Contact your place of purchase for warranty service information.*

## Production Status

Each Machine is manufactured from new parts, or new and serviceable used parts (which perform like new parts). In some cases, the Machine may not be new and may have been previously installed. Regardless of the Machine's production status, IBM's warranty terms apply.

## The IBM Warranty

IBM warrants that each Machine 1) is free from defects in materials and workmanship and 2) conforms to IBM's Official Published Specifications. IBM calculates the expiration of the warranty period from the Machine's Date of Installation. The date on your receipt is the Date of Installation, unless IBM or your reseller informs you otherwise.

During the warranty period, IBM or your reseller will provide warranty service under the type of service designated for the Machine and will manage and install engineering changes that apply to the Machine. IBM or your reseller will specify the type of service.

For a feature, conversion, or upgrade, IBM or your reseller may require that the Machine on which it is installed be 1) the designated, serial-numbered Machine and 2) at an engineering-change level compatible with the feature, conversion, or upgrade. Some of these transactions (called "Net-Priced" transactions) may include additional parts and associated replacement parts that are provided on an exchange basis. All removed parts become the property of IBM and must be returned to IBM.

Replacement parts assume the remaining warranty of the parts they replace.

If a Machine does not function as warranted during the warranty period, IBM or your reseller will repair or replace it without charge. If IBM or your reseller is unable to do so, you may return it to your place of purchase and your money will be refunded.

If you transfer a Machine to another user, warranty service is available to that user for the remainder of the warranty period. You should give your proof of purchase and this Statement to that user.

### **Warranty Service**

To obtain warranty service for the Machine, you should contact your reseller or call IBM. In the United States, call IBM at **1-800-IBM-SERV (426-7378)**. In Canada, call IBM at **1-800-465-6666**. You may be required to present proof of purchase.

Depending on the Machine, the service may be 1) a "Repair" service at your location (called "On-site") or at one of IBM's or a reseller's service locations (called "Carry-in") or 2) an "Exchange" service, either On-site or Carry-in.

When a type of service involves the exchange of a Machine or part, the item IBM or your reseller replaces becomes its property and the replacement becomes yours. The replacement may not be new, but will be in good working order.

It is your responsibility to:

1. obtain authorization from the owner (for example, your lessor) to have IBM or your reseller service a Machine that you do not own;
2. where applicable, before service is provided —
  - a. follow the problem determination, problem analysis, and service request procedures that IBM or your reseller provide,
  - b. secure all programs, data, and funds contained in a Machine,
  - c. inform IBM or your reseller of changes in a Machine's location, and
  - d. for a Machine with exchange service, remove all features, parts, options, alterations, and attachments not under warranty service. Also, the Machine must be free of any legal obligations or restrictions that prevent its exchange; and
3. be responsible for loss of, or damage to, a Machine in transit when you are responsible for the transportation charges.

### **Extent of Warranty**

IBM does not warrant uninterrupted or error-free operation of a Machine.

Misuse, accident, modification, unsuitable physical or operating environment, improper maintenance by you, or failure caused by a product for which IBM is not responsible may void the warranties.

THESE WARRANTIES REPLACE ALL OTHER WARRANTIES, EXPRESS OR IMPLIED, INCLUDING, BUT NOT LIMITED TO, THE IMPLIED WARRANTIES OF MERCHANTABILITY AND FITNESS FOR A PARTICULAR PURPOSE. HOWEVER, SOME LAWS DO NOT ALLOW THE EXCLUSION OF IMPLIED WARRANTIES. IF THESE LAWS APPLY, THEN ALL EXPRESS AND IMPLIED WARRANTIES ARE LIMITED IN

DURATION TO THE WARRANTY PERIOD. NO WARRANTIES APPLY AFTER THAT PERIOD.

In Canada, warranties include both warranties and conditions.

Some jurisdictions do not allow limitations on how long an implied warranty lasts, so the above limitation may not apply to you.

### **Limitation of Liability**

Circumstances may arise where, because of a default on IBM's part (including fundamental breach) or other liability (including negligence and misrepresentation), you are entitled to recover damages from IBM. In each such instance, regardless of the basis on which you are entitled to claim damages, IBM is liable only for:

1. bodily injury (including death), and damage to real property and tangible personal property; and
2. the amount of any other actual loss or damage, up to the greater of \$100,000 or the charge for the Machine that is the subject of the claim.

Under no circumstances is IBM liable for any of the following:

1. third-party claims against you for losses or damages (other than those under the first item listed above);
2. loss of, or damage to, your records or data; or
3. economic consequential damages (including lost profits or savings) or incidental damages, even if IBM is informed of their possibility.

Some jurisdictions do not allow the exclusion or limitation of incidental or consequential damages, so the above limitation or exclusion may not apply to you.

This warranty gives you specific legal rights and you may also have other rights which vary from jurisdiction to jurisdiction.



---

## Notices

References in this publication to IBM products, programs, or services do not imply that IBM intends to make these available in all countries in which IBM operates. Any reference to an IBM product, program or service is not intended to state or imply that only IBM's product, program, or service may be used. Any functionally equivalent product, program, or service that does not infringe any of IBM's intellectual property rights or other legally protectable rights may be used instead of the IBM product, program, or service. Evaluation and verification of operation in conjunction with other products, programs, or services, except those expressly designated by IBM, are the user's responsibility.

IBM may have patents or pending patent applications covering subject matter in this document. The furnishing of this document does not give you any license to these patents. You can send license inquiries, in writing, to the IBM Director of Commercial Relations, IBM Corporation, Purchase, NY 10577.

## Trademarks and Service Marks

The following terms, denoted by an asterisk (\*), used in this publication, are trademarks or service marks of the IBM Corporation in the United States or other countries:

IBM  
Personal System/2

Micro Channel  
PS/2

# Electronic Emission Notices

## Federal Communications Commission (FCC) Statement

**Note:** This equipment has been tested and found to comply with the limits for a Class B digital device, pursuant to Part 15 of the FCC Rules. These limits are designed to provide reasonable protection against harmful interference in a residential installation. This equipment generates, uses, and can radiate radio frequency energy and, if not installed and used in accordance with the instructions, may cause harmful interference to radio communications. However, there is no guarantee that interference will not occur in a particular installation. If this equipment does cause harmful interference to radio or television reception, which can be determined by turning the equipment off and on, the user is encouraged to try to correct the interference by one or more of the following measures:

- Reorient or relocate the receiving antenna.
- Increase the separation between the equipment and receiver.
- Connect the equipment into an outlet on a circuit different from that to which the receiver is connected.
- Consult an IBM authorized dealer or service representative for help.

Properly shielded and grounded cables and connectors (IBM part number 2345678 or its equivalent) must be used in order to meet FCC emission limits. Proper cables and connectors are available from IBM authorized dealers. IBM is not responsible for any radio or television interference caused by using other than recommended cables and connectors or by unauthorized changes or modifications to this equipment. Unauthorized changes or modifications could void the user's authority to operate the equipment.

This device complies with Part 15 of the FCC Rules. Operation is subject to the following two conditions: (1) this device may not cause harmful interference, and (2) this device must accept any interference received, including interference that may cause undesired operation.

---

## Canadian Department of Communications compliance statement

This equipment does not exceed Class B limits per radio noise emissions for digital apparatus, set out in the Radio Interference Regulation of the Canadian Department of Communications.

## Avis de conformité aux normes du ministère des Communications du Canada

Cet équipement ne dépasse pas les limites de Classe B d'émission de bruits radioélectriques pour les appareils numériques, telles que prescrites par le Règlement sur le brouillage radioélectrique établi par le ministère des Communications du Canada.











Part Number: 61G1625

Printed in U.S.A.