

Enabling and Disabling Automatic Cleaning

Whenever a drive needs cleaning, the 3583 Tape Library can automatically clean it after you enable automatic cleaning and import a cleaning cartridge.

Notes:

1. Automatic cleaning is the default for the 3583 Tape Library.
2. You cannot enable automatic cleaning if you have configured the slots in the I/O station as storage slots.
3. When you disable autoclean, the server stops all cleaning inquiries to the drive.

To enable or disable automatic cleaning, perform the following steps.



Shortcut: Main Menu (initial screen) → More → Setup → Library → More → AutoClean

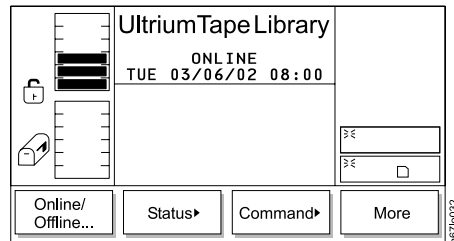


Figure 149. Main Menu (initial screen)

1. From the Main Menu's initial screen, press the button below the **More** softkey. The Main Menu's alternate screen displays (see Figure 150).

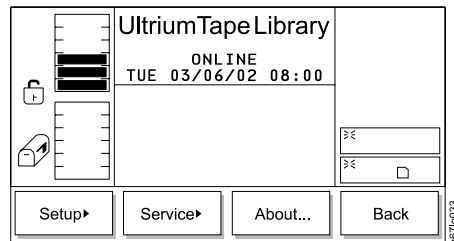


Figure 150. Main Menu (alternate screen)

2. Press the button below the **Setup** softkey. The Setup Menu displays (see Figure 151 on page 130).

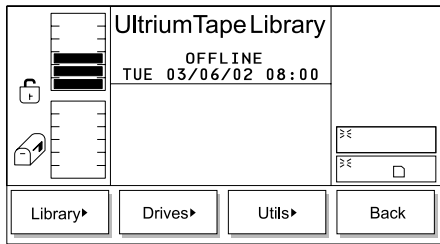


Figure 151. Setup Menu

3. Press the button below the **Library** softkey. The Library Submenu displays (see Figure 152).

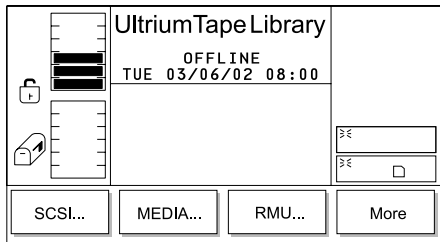


Figure 152. Library Submenu

4. Press the button below the **More** softkey. The More Dialog displays (see Figure 153).

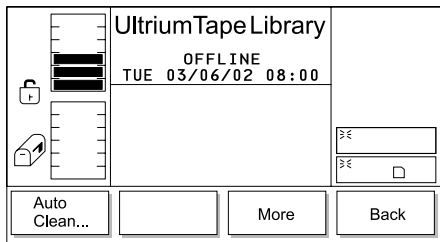


Figure 153. More Dialog

5. Press the button below the **AutoClean** softkey. The Autoclean Setup screen displays (see Figure 154).

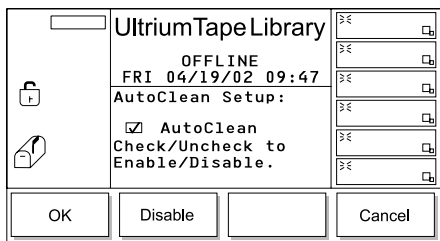


Figure 154. Autoclean Setup screen

6. Perform one of the following:
 - To enable automatic cleaning, press the button below the **Enable** softkey until the screen displays a checkmark in the checkbox beside the AutoClean field. The checkmark indicates that automatic cleaning is currently enabled.
 - To disable automatic cleaning, press the button below the **Disable** softkey until the checkmark disappears from the checkbox. The absence of a checkmark means that automatic cleaning is currently disabled.
7. Press the button below the **OK** softkey. The library enables or disables automatic cleaning and redisplay the More Dialog (see Figure 153 on page 130).
8. Perform one of the following:
 - To return to the Setup Menu (see Figure 151 on page 130), press the button below the **Back** softkey.
 - To return to the Main Menu press the button below the **Back** softkey until the Main Menu displays.

Importing the Cleaning Cartridge

Note: Cleaning cartridges are not required to be labeled, and are transparent and inaccessible to the server when they are at their fixed slot locations.

Before you import a cleaning cartridge, make sure that autoclean is enabled (see “Enabling and Disabling Automatic Cleaning” on page 129).



Shortcut: Main Menu (initial screen) → Command → I/O Station → AutoClean → Import

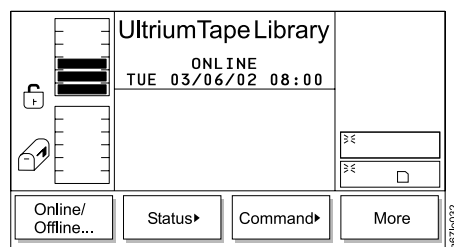


Figure 155. Main Menu (initial screen)

1. From the Main Menu’s initial screen, press the button below the **Command** softkey. The Command Menu displays (see Figure 156 on page 132).

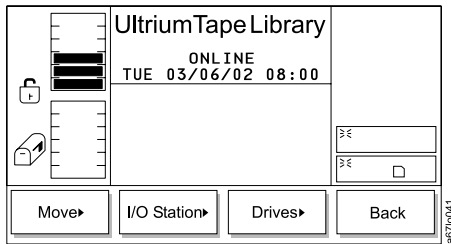


Figure 156. Command Menu

2. Press the button below the **I/O Station** softkey. The I/O Station Submenu displays (see Figure 157).

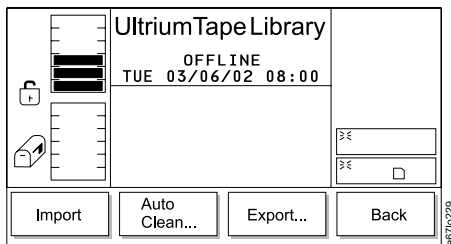


Figure 157. I/O Station Submenu

3. Press the button below the **AutoClean** softkey. The AutoClean Dialog displays (see Figure 158) with the following information about cleaning cartridges and cleaning slots in the library.

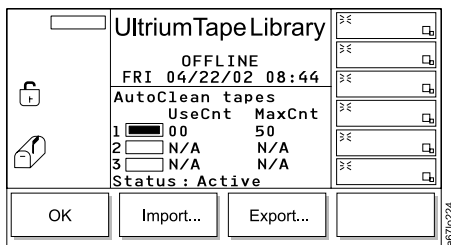





Figure 158. AutoClean Dialog

<p>1 </p> <p>2 </p> <p>3 </p>	<p>Represents the quantity of storage slots that are designated for a cleaning cartridge. A cleaning slot is located at the top of columns 2, 4, and 5. In the AutoClean Dialog, slot 1 refers to the slot in column 2, slot 2 refers to the slot in column 4, and slot 3 refers to the slot in column 5. A shaded box means that the slot is occupied; a box that contains no shading means that the slot is empty.</p> <p>UseCnt The number of times that the cleaning cartridge has been used to clean a drive. Valid values are 0 through 99, or EXP for an expired cartridge.</p> <p>MaxCnt The number of times that the cleaning cartridge can be used to clean a drive. Valid values are 50 (the maximum) or EXP for an expired cartridge. Values in the MaxCnt column are read only.</p> <p>Status Indicates whether the AutoClean function is currently enabled (Active) or disabled (Inactive).</p>
--	--

- If no cleaning cartridge is present in the library (each of the three rectangular boxes contain no shading), import a cleaning cartridge by pressing the button below the **Import** softkey. The Cleaning Tape screen displays (see Figure 159).

Note: The Import softkey is only available if there are empty cleaning cartridge storage slots.

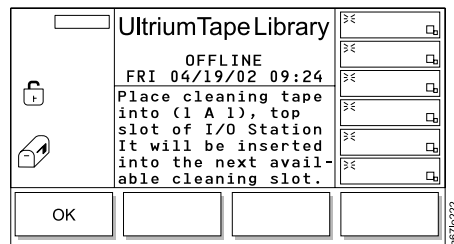


Figure 159. Cleaning Tape screen

- Open the door of the I/O station and place a cleaning cartridge into the top slot of the I/O station. Use only the top slot of the I/O station.
- Close the door of the I/O station. The library executes the TEACH and INVENTORY procedures.

7. After the TEACH and INVENTORY (Scanning) procedures are complete, press the button below the **OK** softkey. The Set Use and Max Count Dialog displays (see Figure 160).

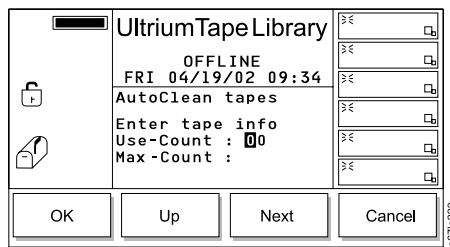


Figure 160. Set Use and Max Count Dialog

8. If known, specify the number of times that the cleaning cartridge has been used by pressing the button below the **Up** or **Next** softkeys to increase the value in the Use-Count field.
9. Press the button below the **OK** softkey. The library imports the cleaning cartridge to the drive and cleaning begins. When the cleaning is finished, the library displays the message **Requested command is now complete.**
10. Perform one of the following:
 - To return to the AutoClean Dialog, press the button below the **OK** softkey.
 - To return to the Main Menu press the button below the **OK** softkey twice, then press the button below the **Back** softkey until the Main Menu displays.

Handling Errors

Table 11. Handling errors during automatic cleaning

Error	Cause	Required Action
Non-cleaning cartridge imported	User error.	Export the non-cleaning cartridge to the I/O station (ignore the message about the cartridge being expired).
Missing cleaning cartridge	The cleaning cartridge was manually removed while the door was open.	Open the door of the library and manually insert a cleaning cartridge into the slot from which it is missing.
Unexpected cleaning slot full	A non-cleaning cartridge was placed into the fixed slot while the door was open.	Remove the non-cleaning cartridge from the fixed slot.
Cleaning tape usage limit met	The cartridge used its allotted cleanings.	Export the expired cartridge to the I/O station and discard it.
All cleaning tapes used	All cartridges used their allotted cleanings.	Export the expired cartridges to the I/O station and discard them. Insert new cleaning cartridges into the library.
Failed get or put of cleaning tape	Electromechanical failure.	Note the SAC code that displays on the operator panel, then refer to "Service Action Codes" on page 255 to resolve the error.

Table 11. Handling errors during automatic cleaning (continued)

Error	Cause	Required Action
Power outage while handling cleaning tape	User error or random power failure.	Access the automatic cleaning function and determine which columns contain cleaning cartridges (see "Importing the Cleaning Cartridge" on page 131). Open the door of the library and inspect the columns to determine from which slot the cleaning cartridge is missing. Manually remove the cleaning cartridge from the gripper and return it to the slot from which it is missing.
Power outage while cleaning drive	User error or random power failure.	Reapply the power and allow the drive to complete the operation.

Exporting the Cleaning Cartridge

To export a cleaning cartridge, perform the following procedure.

Before you export a cleaning cartridge, make sure that autoclean is enabled (see "Enabling and Disabling Automatic Cleaning" on page 129).



Shortcut: Main Menu (initial screen) → Command → I/O Station → AutoClean → Export

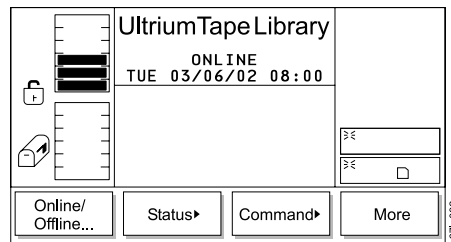


Figure 161. Main Menu (initial screen)

1. From the Main Menu's initial screen, press the button below the **Command** softkey. The Command Menu displays (see Figure 162).

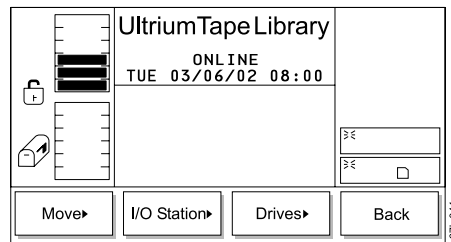


Figure 162. Command Menu

2. Press the button below the **I/O Station** softkey. The I/O Station Submenu displays (see Figure 163 on page 136).

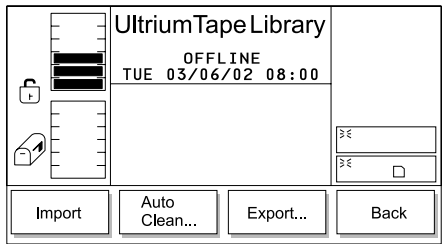


Figure 163. I/O Station Submenu

3. Press the button below the **AutoClean** softkey. The AutoClean Dialog displays (see Figure 164).

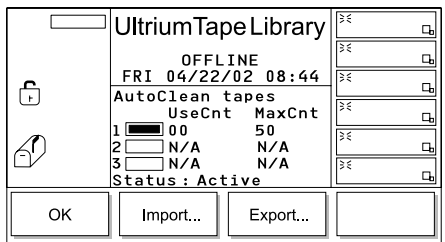


Figure 164. AutoClean Dialog

4. Press the button below the **Export** softkey. The Export Cleaning Tape Dialog displays (see Figure 165).

Note: The Export softkey is only available if at least one cleaning cartridge has been detected.

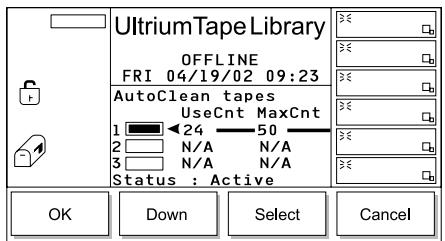


Figure 165. Export Cleaning Tape Dialog

5. Press the button below the **Up** or **Down** softkey to specify the cleaning slot that you want, then press the button below the **Select** softkey. The library exports the cleaning cartridge from the slot that you specified to a slot in the I/O station. When the export is finished, the library displays the message **Requested command is now complete.**
6. Perform one of the following:
 - To return to the AutoClean Dialog, press the button below the **OK** softkey.
 - To return to the Main Menu press the button below the **OK** softkey twice, then press the button below the **Back** softkey until the Main Menu displays.
7. Remove the cleaning cartridge from the I/O station.
8. Press the button below the **Online/Offline** softkey to place the library in the online state.