

I/O Adapter

Plug and Play!

Turbo Series

Turbo 2x2

2 High-Speed Serial Ports and 2 Parallel Ports

Turbo 1x1

1 High-Speed Serial Port and 1 Parallel Port



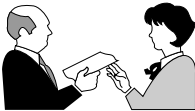
Before You Begin your Installation

The product you have purchased is designed to be easily installed into most IBM PC or compatible systems. Many products have large, easy-to-read legends to allow for the easy configuring of the product. This installation manual contains detailed instructions. Most included software has automatic installation programs to place the software correctly onto your computer. However, as all computers are configured differently, you may be required to perform some basic Windows tasks. If you are not familiar with basic Windows operations, you should check your manual, or seek assistance from you local computer dealer to install the product.



How to get Technical Assistance

The dealer that you purchased this product or your computer from is the first place you should go for technical assistance. The dealer is



usually the most qualified source of help, and is most familiar with your system and how this product should be installed. Many dealers have customer service and technical support programs, with varying levels of support

offered, depending on your needs and computer knowledge. ***Please contact the dealer first whenever a problem occurs.***

If your Dealer Can't Assist you

If you can't get assistance from your dealer, the manufacturer provides varying levels of technical assistance as summarized on the following page.



Boca BBS
561-241-1601



**Automated Fax
Retrieval System**
561-995-9456



**Standard Free
Technical Support**
561-241-8088



Priority Service
900-555-4900

On-Line Support!
CompuServe. GO BOCA
Internet:

email:
support@bocaresearch.com
on the World-wide WEB:
http://www.bocaresearch.com



The Standard Free Technical Support number is for quick answers to specific inquiries on product features and technical questions (call **561-241-8088**; M-F, 8 am to 6:30 pm EST). Direct access to technical support representatives is provided on a limited basis. If you require immediate attention or in-depth help with the installation of the product, please call our 900-priority support number for service. This number gives you immediate access to senior-level technicians. The number is **900-555-4900**. You will be charged \$2.00 per minute. The charges will appear on your next phone bill.

Damaged or Missing Items

We use many world-class quality assurance programs to ensure the product you purchased is of the highest caliber. Sometimes, however, a component may be missing from the box, or is damaged or corrupt in some way. If this happens, immediately return the entire package to your place of purchase so you may exchange it for a new one. Your dealer should be able to provide you with an exchange far more quickly than by contacting us directly. If for some reason you are unable to return the product directly to its place of purchase, refer to the “Servicing Your Product” and “Warranty” sections in this manual for instructions.

CONTENTS

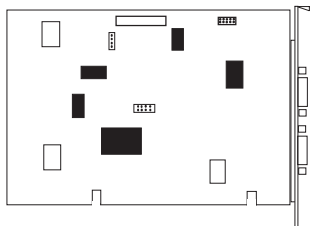
Getting Started	6
EXPRESS Installation	8
Section One: Introduction	12
Section Two: Physical Installation	15
Section Three: Windows 95 Configuration	19
Section Four: Windows 3.x/DOS Configuration	23
Appendix A: Troubleshooting	26
Appendix B: Pin Assignments	29
Appendix C: Servicing Your Boca Product	31
FCC Compliance	34
Warranty	35

Getting Started

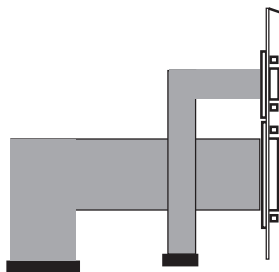
Congratulations on the purchase of your Plug-and-Play compatible IO Turbo Series from Boca, a leader in high-tech computer enhancement products. The streamlined *EXPRESS* Install provided on pages 8-11 is intended for more knowledgeable and experienced users.

Package Contents

Your package contents will vary based on the I/O board model you have purchased. If any items are missing or appear damaged, contact your dealer for assistance. Make sure you have received the following items as shown on the next page:

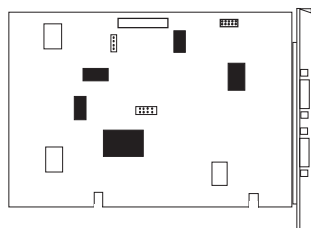


**Turbo 2x2:
2 SERIAL/2
PARALLEL
PORTS**



**CABLE/BRACKET
ASSEMBLY**

DRIVER DISKETTE

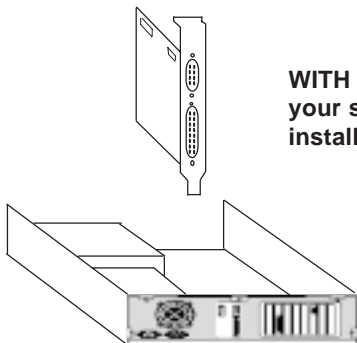


**Turbo 1x1
1 SERIAL/1
PARALLEL PORT**

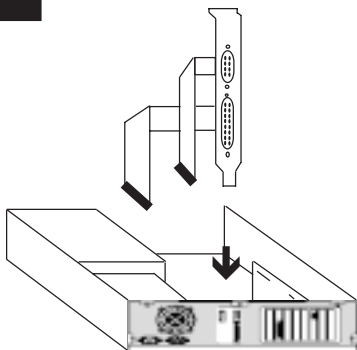


DRIVER DISKETTE

EXPRESS Install

1

WITH POWER OFF, remove your system cover and install card in a 16-bit slot.

2

Attach cable/bracket assembly to Serial B and Parallel B connectors on the IO board. (*2 serial/2 parallel version only)

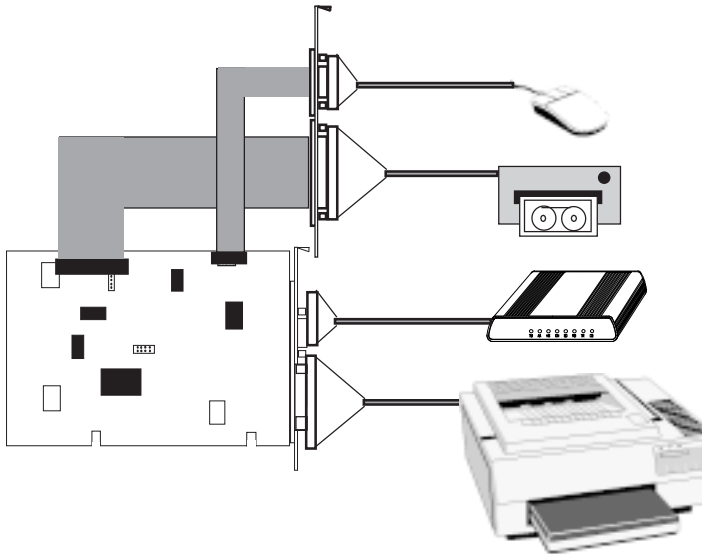
After removing screw and adjacent rear slot cover, secure the bracket using the screw you just removed.

*EXPRESS*Install

3a

Connect peripheral devices. Those depicted here are suggested samples. When done, close your system cover and power your computer on.

Turbo 2x2 2 SERIAL/2 PARALLEL PORTS

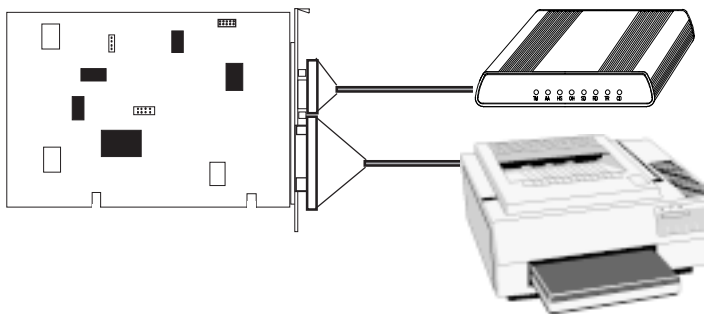


EXPRESS Install

3b

Connect peripheral devices. Those depicted here are suggested samples. When done, close your system cover and power your computer on.

Turbo 1x1 1 SERIAL/1 PARALLEL PORT



EXPRESS Install

4

The IO board will be recognized at power-up. You will need to perform some basic Windows 95 install tasks. See Section Three for details if you require more information.

- *For additional details on physical installation, see Section Two.*
- *For assistance, if you encounter difficulties, see Appendix A.*

Section One: Introduction

You have purchased the IO Turbo Series by Boca for the IBM and compatible family of personal computers. Compatible with ISA systems, the IO Turbo Series comes in two varieties:

- **Turbo 2x2:** two 9-pin male serial port connectors and two 25-pin female parallel port connectors
- **Turbo 1x1:** one 9-pin male serial port connector and one 25-pin female parallel port connector.

The board features a convenient compact size and requires a 16-bit slot. Drivers for configuration and high performance settings are included on diskette.

The ISA-bus Plug-and-Play interface features:

- TI Plug-and-Play Controller TL16PNP200
- IRQ 3, 4, 5, 6, 7, 9, 10, 11, 12, 14, 15
- DMA channel 0, 1, 3, 5, 6

The IO Turbo Series also features high-speed buffer 16C650 UART technology. Its 32-byte FIFO buffers can send and receive data with throughput speeds up to a maximum of 460Kbps to increase data throughput between the host PC and its serial devices. Modem control signals are also provided. Its parallel port interface comes with:

- Two Startech SPP/ECP/EPP/parallel ports
- Bi-directional port capability
- 16-byte FIFO for ECP modes
- 8-bit DMA channel

A Note on Parallel Port Settings

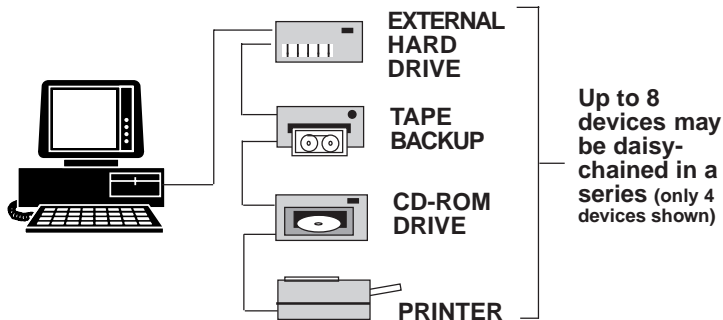
Parallel port settings are defined as follows:

SPP (standard). This setting defines the parallel port as a standard uni-directional port for use with a printer.

EPP (enhanced parallel port). This setting defines the parallel port as an 8-bit bi-directional port for use with hard drives, tape backup systems, and other 8-bit bi-directional devices.

ECP (extended capabilities port). This settings defines the parallel port as a high-performance 8-bit bi-directional port for use with hard drives, tape backup systems, high-performance printers, and CD-ROM drives. This mode also uses DMA to increase performance and reduce system overhead.

EPP Mode allows up to eight devices to be daisy-chain connected. See figure below.

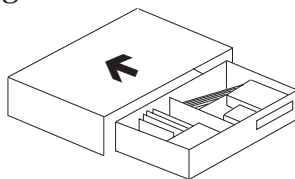


Take a few minutes now and read this manual before installing your IO Turbo Series adapter. Doing so may prevent difficulties later. Our customer support experience has shown that many costly and time-consuming calls to our technical support staff can be avoided with closer attention to the information provided here.

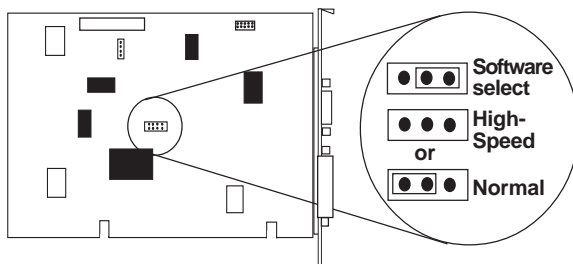
Section Two: Physical Installation

The IO Turbo Series adapter is simple and quick to install—even for the novice computer user. Take a few moments to read over the directions before you begin.

1. Remove your system cover, remembering to power down your system first. You may find it necessary to remove other adapter boards or detach cables. If so, make note of where everything goes. Now, select an empty 16-bit expansion slot. Choose either depending on convenience. Remove the screw and the metal plate that covers the external access to the slot you have selected.

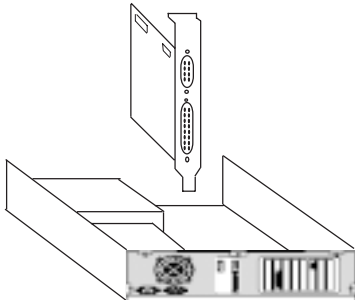


Before inserting the card, check the jumper marked **J12**. Its default setting is software select. Only change it if you will be



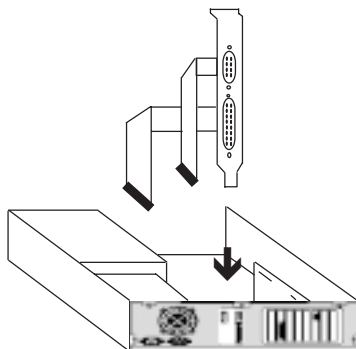
running in high-speed mode at all times. Note that if set to high-speed mode, make sure Communication Port Settings (bits per second) are set to one-fourth of the actual speed desired (e.g., 9600bps will yield 38400bps). **Note:** a serial mouse will not work on the serial ports when the board is set to high-speed mode.

2. Insert the board in the slot you have selected so the edge connector on the bottom rear of the board mates with the socket on the motherboard. Press down firmly on the board. Use the removed screw to secure the board.

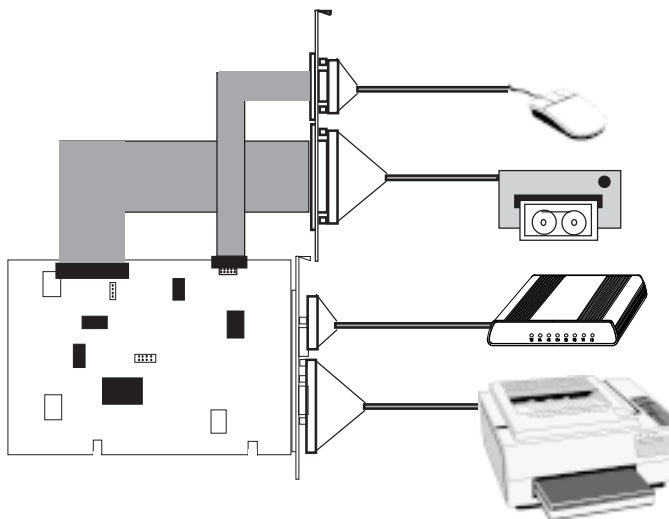


3. Replace any other adapter boards you may have removed and re-attach any detached internal cables. If you have the Turbo 2x2 version, continue with step 4. Otherwise, skip to step 5.
4. Attach cable/bracket assembly to Serial B and Parallel B connectors on the IO board, making sure that the red stripe plugs into pin number "1" on the board connector. After removing screw and, for the Turbo 2x2, adjacent rear slot cover, secure the bracket using the screw you just removed.
5. Replace the system cover taking care not to let it catch on the disk drive or power cables. Once the cover is in place, replace all the screws that you removed earlier. Reconnect any previously removed external cables.

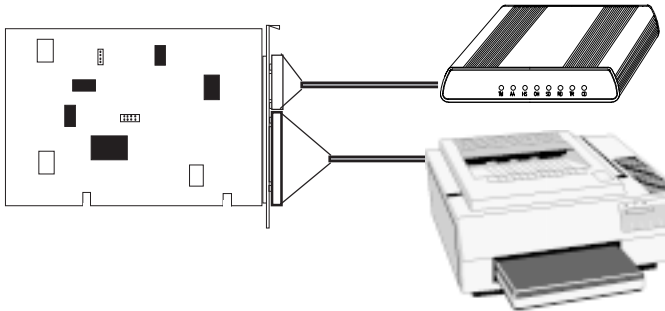
6. Attach the cable(s) for the device(s) you will be using to the appropriate connector and tighten them down with screws attached to the end of the cable(s). The illustration below suggests several possible configurations (e.g., mouse, tape drive, modem, and printer). Physical installation is complete.



Turbo 2x2 Suggested Configuration



Turbo 1x1 Suggested Configuration



The IO board will be recognized at power-up. You will need to perform some basic Windows 95 install tasks. See Section Three for details.

Section Three: Windows 95 Configuration

Before You Begin: If your computer's BIOS includes an option to allow your operating system to configure Plug and Play devices, you should select this option. This will Allow Windows 95 to configure the IO Adapter. (Note: on some Award BIOS's, this will be a setting called "Resources Controlled By:."; select "Manual".

Make sure the IO adapter has been installed in your computer. To configure the IO Adapter in Windows 95, you will need to know which version of Windows 95 you are running. This is easily accomplished by right-clicking My Computer and selecting Properties. Under "System: Microsoft Windows 95" you will find the version. The procedure which follows assumes Windows 95 Service Release 2 (4.00.950B). For version 4.00.950, the install will be slightly different. See footnote below.*

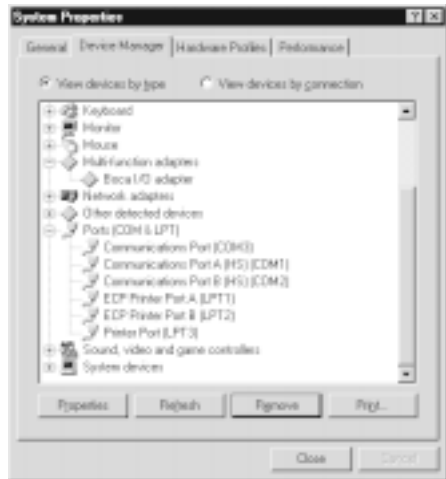
When you start up Windows 95, the "**New Hardware Found**" box is displayed. Next, the "**Update Device Driver Wizard**" is displayed. Perform the following steps:

1. Insert the Boca driver diskette into your floppy drive and click Next.
2. Windows 95 will detect the first device. Click Finish.
3. "**New Hardware Found**" is displayed repeatedly for each device. Depending on the card you are installing, these can include:

- ECP Printer Port A and B
 - High-Speed Communications port A and B
 - Boca I/O Adapter (this is the controller device for the card)
 - Parallel Port Controller
 - Serial Port Controller
4. You will have to restart Windows 95 for the changes to take effect. Click **Yes**.
 5. Go to the **Control Panel, System, Device Manager**.
 6. “Boca I/O Adapter” will appear under **Multi-function adapter**.
 7. The following devices will appear under **Ports (COM and LPT)**:

- ECP Printer Port A
- ECP Printer Port B
- Communications Port A (HS)
- Communications Port B (HS)

Depending on the card you have purchased, some devices may not be listed.



You may notice an exclamation point next to a listed device.

NOTE: Because of differences in Plug and Play systems, and the resources available in your computer, you may find it necessary to change the resources assigned to the Boca I/O adapter . Your computer has 16 IRQs available, IRQ 0 through IRQ 15. Each of the high speed serial ports on the Boca I/O adapter requires an IRQ and the parallel ports will also each need one if you need to support ECP mode. If you have other devices installed in your computer, you may need to manually redistribute the resources among the devices. Below are suggestions for changing the resources assigned to your new I/O card.

• **If an exclamation point is displayed next to an ECP Printer Port:**

Go to Device Manager, select the Port you want to configure, then choose Properties. Under the Resources Tab, uncheck **“Use Automatic Settings”**. Then, select from the drop-down **“Setting Based On:”** list.

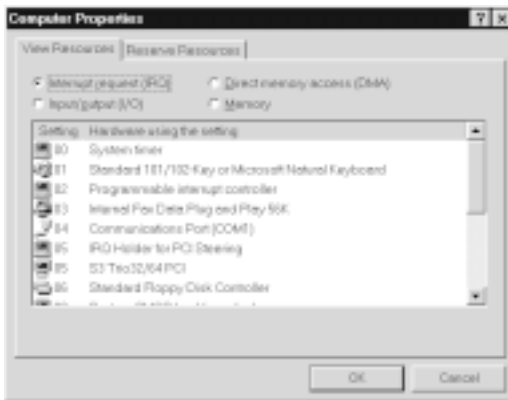
The Basic Configurations with DMA listed will support a port in ECP mode. The last configuration in the list will configure the port without an IRQ. Selecting this choice will free up an IRQ for use with another device, but the parallel port will operate in SPP mode only. ECP and EPP modes are not supported in this configuration.

- **If an exclamation point is displayed next to a Communications Port:**

You may have exhausted available IRQs in your system. Possible solutions are:

1. Change resources for existing devices.
2. Click on a listed COM Port device. Go to Properties and **“Disable in This Hardware Profile”** under the General tab. When you return to Device Manager, a red X is displayed next to the device you just disabled.
3. Free up an IRQ as suggested (see previous page)

HINT: Double-click on **“Computer”** at the top of the Device Manager list, then select the Properties button. This will display IRQs and their assigned devices as shown in the example below.



NOTE: If you make any changes in Device Manager, shut down your system when done, power off, then power back on your computer.

Section Four: Windows 3.x/DOS Configuration

1. Power up your system as you normally would. If your system boots into Windows, exit to DOS.
2. Insert the driver diskette. Go to the A:\ prompt, type **INSTALL** and press ENTER.

IF A PLUG AND PLAY SYSTEM IS DETECTED, continue below (for non Plug and play, continue with page 24).

1. A screen is displayed informing you that your Plug and Play system has detected the new I/O Turbo Series board.
2. You may use your own Plug and Play configuration utility, or select **“Install the Locate Utility”** to determine how your system configured the I/O Turbo Series board.
3. You will be asked to indicate which operating system you have:
 - Windows 3.1, 3.11, Windows for Workgroups 3.11
 - DOS

Follow all on-screen directions. Files are then copied to your hard drive. If you are running Windows, you are asked if you want to update your WIN.INI file. Select Yes.

You have the option of re-installing and selecting IOSETUP to change settings which were assigned to the new device. This will require a working knowledge of COM/LPT port and IRQ settings and how these resources are assigned in your system.

IF A NON PLUG AND PLAY SYSTEM IS DETECTED:

1. A title screen is displayed when you run **INSTALL**. The **IOSETUP** utility will be copied to your hard drive.
2. Next, you will be asked to indicate which operating system you have:
 - Windows 3.1, 3.11, Windows for Workgroups 3.11
 - DOS
3. Files are then copied to your hard drive and system files will be updated. Follow all on-screen directions. When done, the system will reboot.
4. Go to the \IO subdirectory which was created during the file copy process. Select a device(s) from the displayed list as appropriate.

DEVICES

ECP Printer Port A

ECP Printer Port B*

Comm Port A (HS)

Comm Port B (HS)*

IO Adapter 2x2 (or IO Adapter 1x1)

Quit Program

(* IO Adapter 2x2 only)

5. Select a device and press ENTER. Resources for the device are then displayed:

Address
IRQ
DMA

6. Change displayed settings to standard addresses such as:

Printer Ports: 378, 278
Com Ports: 3F8, 2F8, 3E8, 2E8
IO Adapter: 100, 110, 120, 130

You may select “**Custom**” to enter other valid settings.

7. If you choose an address currently in use, **IOSETUP** will tell you. Choose another valid setting.
8. You may press ESC to return to a previous menu. When done, select “**Quit Program**”. If any changes are made you will have to reboot your system.

Appendix A: Troubleshooting

Before contacting your dealer, please review the following list of problems and solutions to see if any of them apply to your situation.

SYMPTOM	POSSIBLE REMEDY
No response from a peripheral device. (i.e. printer, plotter, modem, etc.)	<ul style="list-style-type: none">• Verify that the peripheral device is powered on, ready, on-line, and/or securely connected at BOTH ends of the cable. Be sure the application software is configured to recognize the port that you are attempting to use and that the port in question is actually the port intended to be active. Check the configuration settings to insure that the intended port is enabled and that there are no conflicting ports or shared interrupts.• Is board set to correct mode? (Normal or high-speed?)
I added this card to enable a COM2 for a mouse but it won't work.	<ul style="list-style-type: none">• The mouse driver software must be aware of the COM2 designation. Refer to your mouse documentation.• Make sure board is in normal mode; mouse will not work in high-speed mode.

SYMPTOM	POSSIBLE REMEDY
I am not sure how to set the IRQs.	<ul style="list-style-type: none">• In general, IRQ4 belongs to COM1. IRQ3 belongs to COM2. COM3 and COM4 can be set to IRQ5-7, 10-12, or 11-15. It is best to put an interrupt-driven device on COM1 or 2 (e.g., a mouse).• The IRQ settings in your software must match the settings in Windows 95 Device Manager.
No response when working at speeds exceeding 115Kbps.	<ul style="list-style-type: none">• Verify that the external device is capable of those speeds.• Make sure the board is set to high-speed mode with the J12 jumper.
The board will not work in high-speed mode.	<ul style="list-style-type: none">• The settings must be set correctly with the J12 jumper and Windows 95 Device Manager. These settings must not conflict with any other hardware.
Diagnostic programs such as Checkit report failures on serial ports or wrong UART speed.	<ul style="list-style-type: none">• The diagnostics program used must be capable of testing 650 UARTS. Most diagnostics programs can test only 450 and 550 UARTS.

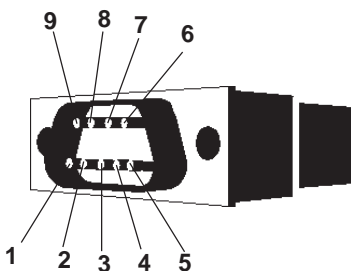
SYMPTOM	POSSIBLE REMEDY
My system locks up when exiting my communication program.	<ul style="list-style-type: none">• The driver might be set to hardware flow control and the external cable may not be wired correctly. Switch to software flow control. If the problem stops, then the cable is wired incorrectly, not allowing the external device to supply the necessary control signals.• Make sure that hardware flow control is set in your system.• Make sure the attached serial device is set to hardware flow control.
EPP/ECP hard drive/CD-ROM drive does not function.	<ul style="list-style-type: none">• Ensure the device is connected properly. Most EPP devices have two DB-25 connectors labelled "COMPUTER" and "PRINTER". The first device should be connected to the DB-25 labelled "COMPUTER". The next device(s) should be connected to the DB-25 connector labelled "PRINTER" on the first device.• If a printer is required, it should be connected to the DB-25 connector labelled "PRINTER" on the last device.• Ensure that the driver for each device is installed and configured correctly. Note: the driver for each device is supplied by the vendor of that device.• Make sure that the ECP printer port has an IRQ assigned for EPP mode, or both an IRQ and DMA for ECP mode.

Appendix B: Pin Assignments

This section is provided for users who are interested in the pin assignments for each port on the I/O Turbo Series adapter.

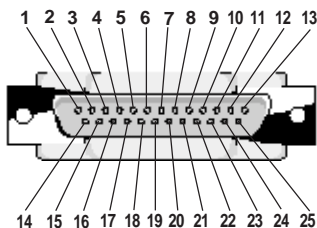
Serial Port A and B (9-pin)

Line Name	Pin #
CARRIER DETECT	1
RECEIVE DATA	2
TRANSMIT DATA	3
DATA TERMINAL READY	4
SIGNAL GROUND	5
DATA SET READY	6
REQUEST TO SEND	7
CLEAR TO SEND	8
RING INDICATOR	9



Parallel Port A and B (25-pin)

Line Name	Pin #
-STROBE	1
DATA BIT 0	2
DATABIT 1	3
DATA BIT 2	4
DATA BIT 3	5
DATA BIT 4	6
DATA BIT 5	7
DATA BIT 6	8
DATA BIT 7	9
-ACKnowledge	10
BUSY	11
Print End (out of paper)	12
SeLeCT	13
-AUTOFeed	14
-ERROR	15
-INITialize printer	16
-SeLeCT INput	17
GROUND	18-25



Appendix C: Servicing Your Boca Product

If your IO Turbo Series adapter requires service, first contact the authorized dealer from whom you purchased the product. If the dealer is unable to assist you, and you must contact Boca Research, Inc., please follow the instructions below. Our electronic BBS is available 24 hours a day at (561) 241-1601 and will support data transmission speeds up to 33.6Kbps with settings of N, 8, 1. If you have a modem, the BBS may be helpful (especially during off hours) if you have a question about product settings or compatibility, or if you wish to download driver software or utilities.

NOTE: CALLING TECHNICAL SUPPORT WITHOUT COMPLETE AND ACCURATE INFORMATION CONCERNING YOUR PROBLEM MAY BE BOTH TIME-CONSUMING AND FRUSTRATING FOR YOU.

1. When calling Boca Research Technical Support, have the following information available:
 - Board name and part number (located on the board)
 - Computer model
 - Peripherals in system
 - Computer manufacturer
 - Operating system and version

If you suspect a problem with a specific program or software package, make note of the name, version or release number, and manufacturer of the software.

2. Call Boca Research Technical Support Department between the hours of 8:00 a.m. and 6:30 p.m. EST at (561) 241-8088. A technical support specialist will be available to discuss the problem(s) you are experiencing. If factory service is required, you will be given a Return Merchandise Authorization (RMA) number. ***Please place this number on the outside of the package*** when you return the item(s) for service and reference it on any correspondence included in the package. Boca Research, Inc. will return any product which is not accompanied by an RMA number.
3. Refer to the Warranty Statement if the product is covered under the five-year Boca Research, Inc. Limited Warranty.
4. Certain parts will not be covered under the Boca Research, Inc. Limited Warranty. Dealer installed parts are warranted by the dealer. Parts which you have installed yourself are covered only by the suppliers warranties. In these cases, Boca Research, Inc. can identify which parts are defective, but will not replace such parts until specific written authorization is received from you. The cost of parts and labor involved in making such repairs will be billed to you C.O.D.

5. When sending the IO Turbo Series adapter to Boca Research, Inc. for repairs, please be sure to include:

- the Boca Research IO Turbo Series adapter (**board only**)
- your name
- your return street address (for UPS purposes)
- your phone number
- the RMA number mentioned above.

Package the product securely in a container equivalent to the original packaging, and insure the package to protect against loss or damage during transit. Shipping charges must be prepaid; C.O.D. shipments will not be accepted. Please use the address below for all correspondence:

Boca Research, Inc.
RMA Department - RMA # _____
6500 West Rogers Circle
Boca Raton, FL 33487-2841

6. If the repairs performed on your IO Turbo Series adapter were covered by the warranty, Boca Research, Inc. will return it prepaid via UPS.

FCC Compliance

This equipment has been tested and found to comply with the limits for a **Class B** digital device, pursuant to Part 15 of the FCC Rules. These limits are designed to provide reasonable protection against harmful interference in a residential installation.

This equipment generates, uses, and can radiate radio frequency energy and, if not installed and used in accordance with the instructions, may cause harmful interference to radio or television reception. However, there is no guarantee that interference will not occur in a particular installation. If this equipment does cause harmful interference to radio or television reception, which can be determined by turning the equipment off and on, the user is encouraged to try to correct the interference by one or more of the following measures:

- Reorient or relocate the receiving antenna.
- Increase the separation between the equipment and the receiver.
- Connect the equipment into an outlet on a circuit different from that to which the receiver is connected.
- Consult the dealer or an experienced radio/TV technician for help.”

CHANGES OR MODIFICATIONS TO THIS EQUIPMENT NOT EXPRESSLY APPROVED BY THE MANUFACTURER COULD VOID YOUR AUTHORITY TO OPERATE THE EQUIPMENT.

Limited Warranty

Boca Research, Inc. (BRI) warrants to the original buyer of this BRI product that the hardware is free of defects in materials and workmanship for a period of five (5) years from the date of purchase from BRI or an authorized dealer ("the Warranty Period"). Should the product fail to be in working order at any time during the five-year period, BRI, will at its option, repair or replace this product as described below, provided that in BRI's sole determination the part or product has not been abused, misused, repaired, or modified.

All products will be serviced and returned via ground at no charge to customers.

All returns for limited warranty service require a Return Merchandise Authorization (RMA). All customers are required to demonstrate proof of purchase when requesting an RMA. The period of warranty commences on the date of purchase. A dated copy of the sales slip must be included with the returned merchandise.

Products which require Limited Warranty service during the warranty period should be delivered to BRI at the address in the Appendix (Servicing Your Boca Product) with proof of purchase, copy of canceled check (if any), and the Return Merchandise Authorization (RMA) number provided by BRI Technical Support. Refer to the Appendix in this manual. Replacement parts or complete products will be furnished on an exchange basis only. Replaced parts and/or products become the property of BRI.

If the returned product is sent by mail, the purchaser agrees to prepay shipping charges, insure the product or assume the risk of loss or damage which may occur in transit, and to use a shipping container equivalent to the original packaging. BRI does not make any warranties in respect to the product, either expressed or implied, including no implied warranties of merchantability or fitness for a particular purpose, except as expressly provided in this agreement. If any labor, repair, or parts replacement is required because of accident, negligence, misuse, theft, vandalism, fire, water or other peril; or because of conditions outside of specifications, including, but not limited to, electrical power, temperature, humidity or dust; or by moving, repair relocation, or alteration not performed by BRI, or by any other cause other than normal use, the warranty and maintenance obligations provided herein shall not apply.

BRI SHALL NOT BE LIABLE FOR ANY SPECIAL, INCIDENTAL, OR CONSEQUENTIAL DAMAGES OR FOR LOSS, DAMAGE, OR EXPENSE DIRECTLY OR INDIRECTLY ARISING FROM CUSTOMER'S USE OF OR INABILITY TO USE THE EQUIPMENT EITHER SEPARATELY OR IN COMBINATION WITH OTHER EQUIPMENT, OR FOR PERSONAL INJURY OR LOSS OR DESTRUCTION OF OTHER PROPERTY, OR FROM ANY OTHER CAUSE.

Boca's products are manufactured from new and serviceable used parts tested to Boca Research's quality assurance standards. If the product proves to be defective, Boca Research will bear the costs of labor and materials for hardware replacement or repair during the above specified warranty period. Boca Research or its Authorized Service Providers shall have the option to replace any defective part(s) with new part(s) or, at the option of Boca Research, with serviceable used parts that are equivalent to new parts in performance. Boca Research shall also have the option to replace any defective product(s) with functionally equivalent product(s)

This warranty shall not be applicable to the extent that any provision of this warranty is prohibited by any Federal, state, or municipal law which cannot be preempted. This warranty gives you specific legal rights, and you may also have other rights which vary from state to state.

©1997. Boca Research, Inc. All rights reserved No reproduction of this document, in any form, is allowed without permission from Boca Research, Inc. Boca Research, Inc. is not liable for any damages resulting from technical or editorial errors or omissions contained in this document. The information in this manual is subject to change without notice. Revisions to the product(s) described in this manual may occur at any time without notice.

Trademarks. All Boca Research products are trademarks of Boca Research, Inc. All other references to computer systems, software, and peripherals use trademarks owned by their respective manufacturers.

Publication Date: October, 1997
Printed in the U.S.A.

9361.P65



Part No. 9361
10/97-2