

CyberLink

PowerCinema 4

QuickStart Guide

CyberLink



5 9 9 1 - 4 9 0 9

Copyright and Disclaimer

All rights reserved. No part of this publication may be reproduced, stored in a retrieval system, or transmitted in any form or by any means electronic, mechanical, photocopying, recording, or otherwise without the prior written permission of CyberLink Corporation.

To the extent allowed by law, POWERCINEMA IS PROVIDED "AS IS", WITHOUT WARRANTY OF ANY KIND, EITHER EXPRESS OR IMPLIED, INCLUDING WITHOUT LIMITATION ANY WARRANTY FOR INFORMATION, SERVICES, OR PRODUCTS PROVIDED THROUGH OR IN CONNECTION WITH POWERCINEMA AND ANY IMPLIED WARRANTIES OF MERCHANTABILITY, FITNESS FOR A PARTICULAR PURPOSE, EXPECTATION OF PRIVACY, OR NON-INFRINGEMENT.

BY USING THIS SOFTWARE, YOU AGREE THAT CYBERLINK WILL NOT BE LIABLE FOR ANY DIRECT, INDIRECT, OR CONSEQUENTIAL LOSS ARISING FROM THE USE OF THIS SOFTWARE OR MATERIALS CONTAINED EITHER IN THIS PACKAGE.

The terms and conditions here under shall be governed and construed in accordance with the laws of Taiwan.

PowerCinema is a registered trademark along with other company and product names mentioned in this publication, used for identification purposes and remain the exclusive property of their respective owners.

International Headquarters

Mailing Address CyberLink Corporation
15F, #100, Min Chuan Road, Hsin Tian City
Taipei County, Taiwan, R.O.C.

Web Site www.cyberlink.com

Telephone 886-2-8667-1298

Fax 886-2-8667-1300

Copyright © 2005 CyberLink Corporation. All rights reserved.

PowerCinema Quick Start Guide

PowerCinema is a fully integrated entertainment center for the digital home. With PowerCinema you can watch TV & movies, listen to radio stations, view your home videos, browse through the family photos, and listen to your favorite music. PowerCinema lets you watch, listen, play, and enjoy total TV entertainment.

Setup PowerCinema

Before you start using PowerCinema, we recommend that you follow this QuickStart Guide to setup your computer for PowerCinema. Please install PowerCinema if you have not already done so.

To setup PowerCinema, do this:

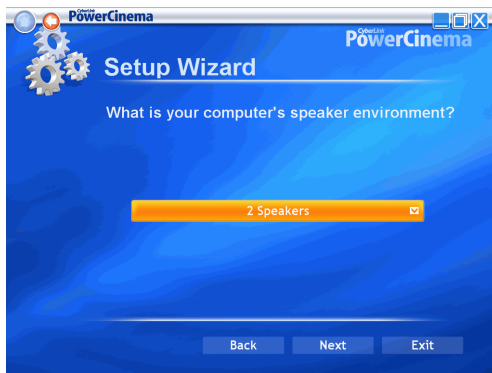
1. Click **Start > All Programs > CyberLink PowerCinema > PowerCinema**. The Setup Wizard starts and asks you to optimize your computer for multimedia, click **Next**.



2. Select the screen ratio of your display device and click **Next**.



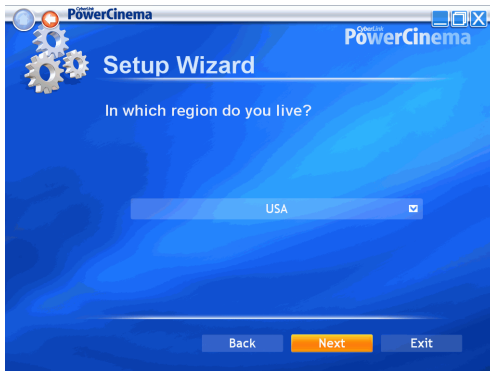
3. Select your computer's speakers and click **Next**.



4. Select the TV connection you have and click **Next**.



5. Choose the region that you live in and click **Next**.



6. Setup Wizard prompts you to autoscan for available TV channels. If you would like to scan for available TV channels

now, click **Autoscan for TV Channels Now**. Click **Complete** when scanning is finished.

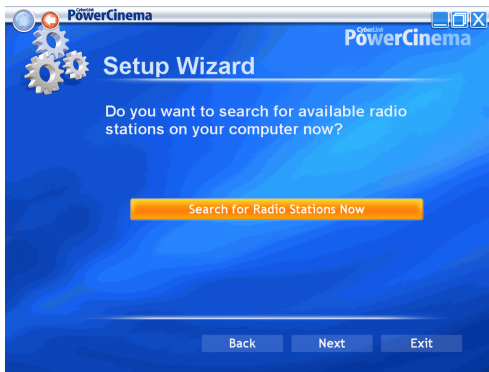


- If you do not wish to autoscan for available TV channels, please click **Next** to continue to the next step. You may scan for TV channels at a later time.
7. Setup Wizard prompts you to configure the Electronic Program Guide to activate the TV Guide. If you would like to setup the Electronic Program Guide now, click **More information about EPG**.



- If you do not wish to activate the TV Guide, please click **Next** and skip Steps 8-11. You may activate the TV Guide at a later time.

8. Choose the data source for your Electronic Program Guide and click **Next**.
9. Enter your 5 digits Zip Code and click **Activate**.
10. Choose the TV Service Provider for your area and click **Next**.
11. Your TV Guide is now activated. Click **Finish** to continue to the next step.
12. Setup Wizard prompts you to search for available radio stations. If you would like to search for available radio stations now, click **Search for Radio Stations Now**. Click **Complete** when scanning is finished.

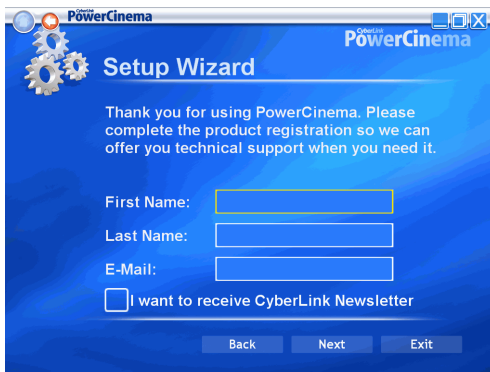


- If you do not wish to search for available radio stations, please click **Next** to skip this step. You may search for available radio stations at a later time.
13. Setup Wizard prompts you to search for music on your computer. If you would like to search for music now, click

Search for Music Now. Click **Complete** when the search is finished.



14. Setup Wizard prompts you to register PowerCinema, please enter your First Name, Last Name, and E-Mail address. Click **Next** to continue to the next step.



- Check the check box if you wish to receive information from CyberLink.
15. Your computer is now optimized for PowerCinema. Please click **Finish** to exit the Setup Wizard.