

High-Speed Internet Connection

DSL-300G

150X Faster Than Analog Modems!



- 10/100Mbps Fast Ethernet Connectivity
- Supports All Major ISPs
- 3 Year Warranty

Free
Telstra Approved
Microfilter
Included

ADSL Ethernet Modem



D-Link, a worldwide leader in networking products, introduces the new DSL-300G, D-Link's third generation ADSL modem that provides 10/100 Ethernet connectivity at an affordable price.

The DSL-300G uses ADSL (Asymmetric Digital Subscriber Line) technology to bring your Internet Speeds up to 150 times faster than a 56K analog modem over a standard phone line.

This modem connects to your PC, Macintosh, server, Internet gateway or other hosts through a 10/100Mbps Fast Ethernet interface, commonly found in most computer equipment today. It auto-senses the host's Ethernet interface and auto-negotiates to the highest available speed.

The Modem comes with a simple configuration tool and a web-based Graphical User Interface (GUI) that allows you to easily modify settings to connect

to an Internet Service Provider (ISP). Connection speed, traffic statistics and other detailed information are displayed.

The DSL-300G supports Static IP, Dynamic IP, as well as PPPoE/PPPoA and Bridge connections terminating on the local PCs. The DSL-300G supports all applications such as video games and VPN connections with no configuration needed on the modem.

The DSL-300G is simple to upgrade to any new releases of firmware, making it future proof for both end-users and service providers.

The DSL-300G is a great all-round solution that will satisfy your needs, whether you're a home user who requires high-speed Internet access for faster web surfing or quicker downloads, or small business that depends on the Internet to conduct your daily business.

ADSL Ethernet Modem

Software Features

Data Rates

- G.dmt, downstream: up to 8 Mbps
- G.dmt, upstream: up to 640 Kbps
- G.lite, downstream: up to 1.5 Mbps
- G.lite, upstream: up to 512 Kbps

Protocol Support

- Bridged Ethernet over ATM
- PPP over ATM
- PPP over Ethernet

Management

- Built-in SNMP-based MIBs
- TFTP and HTTP firmware upgrade
- Telnet support

Configuration

- Web-based Configuration Tool

Hardware Features

LED Indicators

- Power
- Status
- ADSL Link/ Act
- Ethernet Link/ Act

Interface

- ADSL: RJ-11 connector (to phone line)
- RJ45 - 10/100 Ethernet

Power Supply

- Output: 9VAC 1.0A
- Input: 240VAC 50Hz (through external AC power adapter)

Dimensions

- 142 x 117 x 31 mm

Weight

- 360 gms

Warranty Details

- 3 Years from date of purchase (return to D-Link Head Office)

Compliance Standards

ADSL Standards

- ANSI T1.413 issue 2 (Full rate DMT analog POTS)
- ITU G.992.1(G.dmt) Annex A
- ITU G.992.2(G.lite) Annex A
- ITU G.994.1(G.hs)
- IP1149 Issue 5

Signaling

- ATM signaling: UNI 3.0, 3.1 and 4.0
- Precise ATM traffic shaping

Package Content

DSL-300G Modem

- CAT RJ45 Cable
- Inline Filter
- 9VAC 1.0A Power Pack
- Driver & Manual CD
- Telephone Cable

Environmental

Operating Temperature

- 0 – 40 deg C

Storage Temperature

- -20 – 55 deg C

Operating Humidity

- 20 – 95% non-condensing

Emissions (EMI)

- FCC Class B
- ICES-003
- CE Class B

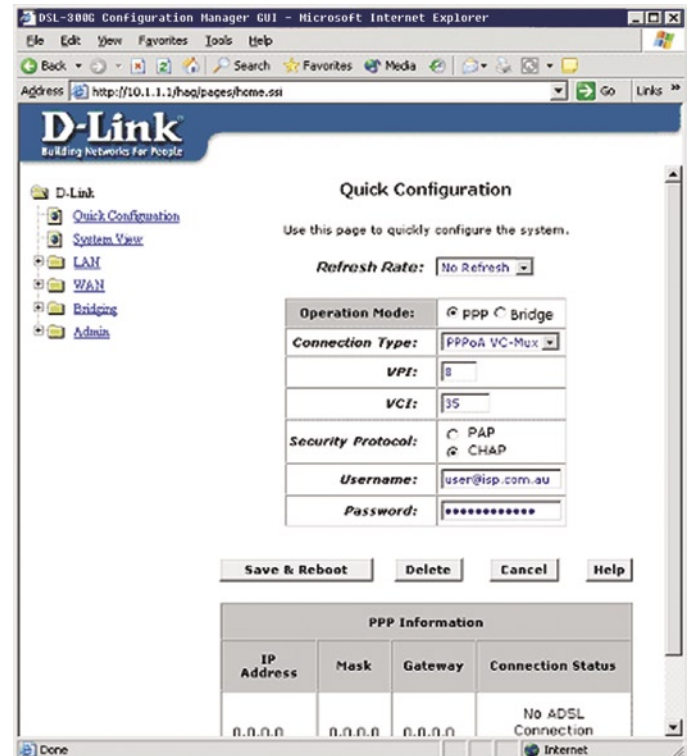
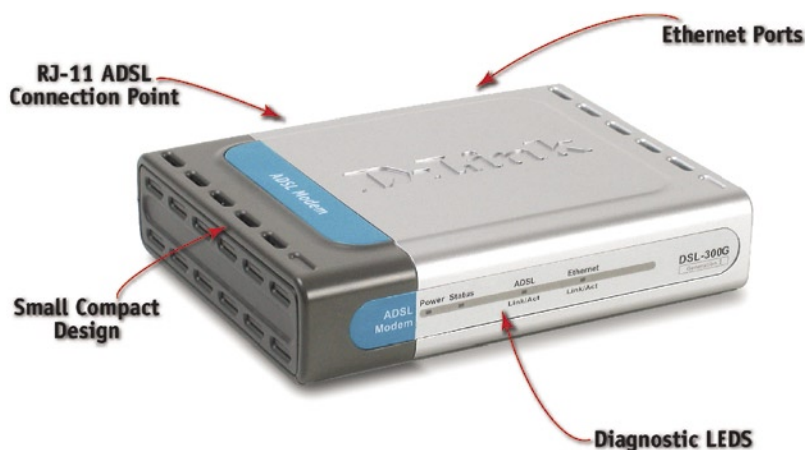
Safety

- C-Tick Certified
- A-Tick Certified
- CSA International Mark

Ordering Information

- ADSL Modem - DSL-300G

(ADSL modem with 10/100Mbps Fast Ethernet)



Configuration Utility makes it easy to quickly set up and configure the DSL-300G. It displays a wide array of management settings and tools.

D-Link Australia Pty. Ltd. 1 Giffnock Avenue NSW 2113 Phone: +61-(0)2-8899-1800 www.dlink.com.au
 ©Copyright D-Link Australia Pty. Ltd. 2004. All rights reserved.
 D-Link® is a registered trademark of D-Link Australia Pty. Ltd.
 Other trademarks or registered trademarks are the property of their respective manufacturers or owners.
 Specifications are subject to changes without notice.



D-Link
 Building Networks for People